




**Please cite the Published Version**

Rees, PA, Castle, J , Clouston, HW, Lamb, R, Singh, U , Duff, SE and Kirwan, CC  (2023)  
The effects of coagulation factors and their inhibitors on proliferation and migration in colorectal cancer. *Cancer Medicine*, 12 (16). pp. 17184-17192. ISSN 2045-7634

**DOI:** <https://doi.org/10.1002/cam4.6332>

**Publisher:** Wiley

**Version:** Published Version

**Downloaded from:** <https://e-space.mmu.ac.uk/636800/>

**Usage rights:**  [Creative Commons: Attribution 4.0](https://creativecommons.org/licenses/by/4.0/)

**Additional Information:** This is an open access article which first appeared in *Cancer Medicine*




**Data Access Statement:** The datasets generated and analysed in this research article are available in the Figshare repository [DOI 10.48420/22787444].

**Enquiries:**

If you have questions about this document, contact [openresearch@mmu.ac.uk](mailto:openresearch@mmu.ac.uk). Please include the URL of the record in e-space. If you believe that your, or a third party's rights have been compromised through this document please see our Take Down policy (available from <https://www.mmu.ac.uk/library/using-the-library/policies-and-guidelines>)

## RESEARCH ARTICLE

# The effects of coagulation factors and their inhibitors on proliferation and migration in colorectal cancer

Peter Adam Rees<sup>1,2</sup> | John Castle<sup>1</sup>  | Hamish William Clouston<sup>1,3</sup> | Rebecca Lamb<sup>4</sup> | Urvashi Singh<sup>1,2</sup>  | Sarah Elizabeth Duff<sup>1,2</sup> | Cliona Clare Kirwan<sup>1,2</sup> 

<sup>1</sup>Division of Cancer Sciences, School of Medical Sciences, Faculty of Biology, Medicine and Health, University of Manchester, Manchester, UK

<sup>2</sup>Manchester University NHS Foundation Trust, Manchester, UK

<sup>3</sup>The Christie NHS Foundation Trust, Manchester, UK

<sup>4</sup>Department of Life Sciences, Manchester Metropolitan University, Manchester, UK

## Correspondence

Cliona Clare Kirwan, Division of Cancer Sciences, School of Medical Sciences, Faculty of Biology, Medicine and Health, University of Manchester, Manchester, UK.

Email: [cliona.kirwan@manchester.ac.uk](mailto:cliona.kirwan@manchester.ac.uk)

## Funding information

Bupa Foundation; Royal College of Surgeons of England

## Abstract

**Background/Aim:** Clotting factors promote cancer development. We investigated if coagulation proteins promote proliferation and migration in colorectal cancer (CRC) cell lines and whether their direct inhibitors can attenuate these effects.

**Materials and Methods:** DLD-1 and SW620 cells were treated with tissue factor (0, 50, 100 and 500 pg/mL  $\pm$  10  $\mu$ g/mL 10H10 [anti-tissue factor antibody]), thrombin (0.0, 0.1, 1.0 and 10.0 U/mL  $\pm$  0.5  $\mu$ M dabigatran [thrombin inhibitor]) and Factor Xa, FXa (0.0, 0.1, 1.0 and 10.0 U/mL  $\pm$  100 ng/mL rivaroxaban [FXa inhibitor]) and their effects on proliferation and migration were quantified using the PrestoBlue<sup>®</sup> and transwell migration assays, respectively.

**Results:** Thrombin increased proliferation from 48 h treatment compared to its control (48 h 6.57  $\pm$  1.36 u vs. 2.42  $\pm$  0.13 u,  $p$  = 0.001, 72 h 9.50  $\pm$  1.54 u vs. 4.50  $\pm$  0.47 u,  $p$  = 0.004 and 96 h 10.77  $\pm$  1.72 u vs. 5.57  $\pm$  0.25 u,  $p$  = 0.008). This increase in proliferation was attenuated by dabigatran at 72 h (2.23  $\pm$  0.16 u vs. 3.26  $\pm$  0.43 u,  $p$  = 0.04).

Tissue factor (0 pg/mL 20.7  $\pm$  1.6 cells/view vs. 50 pg/mL 32.4  $\pm$  1.9 cells/view,  $p$  = 0.0002), FXa (0.0 U/mL 8.9  $\pm$  1.1 cells/view vs. 10.0 U/mL 17.7  $\pm$  1.7 cells/view,  $p$  < 0.0001) and thrombin (0.0 U/mL 8.9  $\pm$  1.3 cells/view vs. 10.0 U/mL 20.2  $\pm$  2.0 cells/view,  $p$  < 0.0001) all increased migration compared to their controls. However, their direct inhibitors did not attenuate these increases.

**Conclusion:** Thrombin, FXa and TF all increase migration in CRC in vitro. Thrombin induced increase in proliferation is abrogated by dabigatran. Dabigatran may have potential as an anti-cancer therapy in CRC.

## KEYWORDS

coagulation factors, colorectal cancer, migration, proliferation

## 1 | INTRODUCTION

Malignancy is associated with a hypercoagulable state, resulting in the clinical manifestation of venous thromboembolism (VTE). The risk of symptomatic VTE is increased sevenfold in patients with cancer.<sup>1,2</sup> Colorectal cancer (CRC) is the second most common cause of cancer death in the United Kingdom, with about 16,800 deaths each year.<sup>3</sup> Approximately 5% of CRC patients will develop a VTE.<sup>4</sup> The risk is greatest in more advanced cancers and those undergoing thrombogenic therapies, including surgery and chemotherapy.<sup>4</sup>

VTE results from the pathological activation of the coagulation system. Tissue factor (TF), the initiator of the coagulation system, sets in motion a series of cellular-based reactions involving the key downstream effectors, factor Xa (FXa) and thrombin. This ultimately leads to the production of a fibrin clot.<sup>5</sup> The direct oral anticoagulants dabigatran and rivaroxaban, which inhibit thrombin and FXa, respectively, are in routine clinical use in VTE prophylaxis.

The symbiotic relationship between CRC and the extrinsic clotting pathway extends beyond an increased risk of VTE. Tissue factor (TF), the initiator of the extrinsic clotting pathway has increased expression in CRC<sup>6–8</sup> and its expression correlates with change in *KRAS* and *TP53* mutational status in CRC cell lines.<sup>9</sup> TF and thrombin promotion of cancer processes could be achieved by binding to and activating specific G-protein-coupled receptors, that is, protease-activated receptors (PAR)-1 and -2.<sup>10</sup> In *in vitro* studies, the over-expression of TF and PAR-2 in a CRC cell line led to increased proliferation and motility,<sup>11</sup> possibly via PKC $\alpha$  and ERK1/2 signalling pathways.<sup>12,13</sup> The pro-proliferative effects of epithelial TF expression in epithelial CRC cell lines has been demonstrated in multiple cell lines.<sup>14</sup> PAR-1 activation by thrombin may have a pro-migratory effect in cancer by affecting the expression of the  $\alpha v \beta 5$  integrin<sup>15</sup>; however, this is not consistent in the literature.<sup>16</sup>

Despite the previous focus on *epithelial* expression of extrinsic clotting factors, key coagulation factors, including TF, have been shown to be upregulated in the tumour microenvironment (TME) in breast cancer.<sup>17</sup> Furthermore, PAR-1 and PAR-2 are also expressed by cancer-associated fibroblasts (CAFs).<sup>18</sup> It is possible that *exogenous* extrinsic clotting factors from the TME may influence tumour biology.

In a recent study by Graf et al., rivaroxaban promoted anti-cancer immunity in colorectal cancer murine models.<sup>19</sup> Indeed, the use of anticoagulants to improve outcomes in cancer is not a new concept. As early as the 1980s improved survival was described in patients with small-cell lung cancer who were treated with warfarin.<sup>20</sup> Conflicting effects of low molecular weight heparin (LMWH) on survival in

cancer have been observed.<sup>21–23</sup> However, neither warfarin nor LMWH exert their effects via the TF/FVIIa/PAR-2 axis which appears to be fundamental to cancer progression. Pharmacologic inhibition of hepatic prothrombin production with a non-clinically approved agent impedes murine and human colon cancer growth *in vivo*.<sup>24</sup> There is also new therapeutic interest in targeting colorectal cancer TF expression, including with the antibody-drug conjugate tisotumab vedotin that is currently undergoing Phase 2 trials for efficacy and safety.<sup>25</sup> A monoclonal antibody to TF, 10H10 (Clone: TF9-10H10), is commercially available although is not approved for clinical use.

The aim of this study was to investigate the effects of exogenous extrinsic clotting pathway factors, that is, thrombin, FXa and TF, on the key cancer processes of proliferation and migration in CRC cells *in vitro* and determine if these effects can be mitigated by the addition of their direct inhibitors.

## 2 | MATERIALS AND METHODS

### 2.1 | Cell lines and culture

Human colorectal cancer cell lines DLD-1 and SW620 were used for all assays (American Type Culture Collection [ATCC]). DLD-1 cells were maintained in McCoy's 5A modified medium (ThermoFisher Scientific) supplemented with 10% foetal bovine serum (FBS, Gibco, ThermoFisher Scientific), 100U/mL penicillin G and 100 $\mu$ g/mL streptomycin sulphate (ThermoFisher Scientific). SW620 cells were maintained in Dulbecco's modified Eagle medium (DMEM, Sigma-Aldrich) supplemented with 10% FBS (Gibco, ThermoFisher Scientific), 100U/mL penicillin G and 100 $\mu$ g/mL streptomycin sulphate (ThermoFisher Scientific) and 2mM GlutaMAX (ThermoFisher Scientific). Cells were cultured at 37°C and 5% CO<sub>2</sub>/air.

### 2.2 | Cell line authentication

Cell lines were authenticated by STR (short tandem repeat) analysis using the Promega® Powerplex 21 System in the Molecular Biology Core Facility at the Cancer Research UK Manchester Institute.

### 2.3 | Reagents

The human coagulation factors thrombin (Sigma-Aldrich), factor Xa (Enzyme Research Laboratories) and recombinant coagulation factor III/tissue factor (R&D Systems) were purchased from the manufacturers.

Their respective inhibitors dabigatran (Boehringer Ingelheim), rivaroxaban (Bayer) and 10H10, a monoclonal antibody to TF, (Clone TF9-10H10, Abcam) were similarly obtained.

The cell viability reagent PrestoBlue<sup>®</sup> was obtained from ThermoFisher Scientific.

## 2.4 | Proliferation assay

Proliferation was quantified using the PrestoBlue<sup>®</sup> proliferation assay. Cells were seeded at a density of  $2.5 \times 10^3$  (DLD-1) or  $5.0 \times 10^3$  (SW620) cells per well in 180  $\mu$ L of complete cell line-specific media in a 96-well plate (Black with clear flat bottom). Three wells were plated per experimental condition. Wells containing cell line-specific media only were used to correct for background fluorescence. After 24 h the media was replaced with complete, cell line-specific media supplemented with exogenous coagulation factors  $\pm$  direct inhibitors/monoclonal antibodies at physiological relevant doses (tissue factor 0, 50, 100 and 500 pg/mL, thrombin 0.0, 0.1, 1.0 and 10.0 U/mL  $\pm$  0.5  $\mu$ M dabigatran and FXa 0.0, 0.1, 1.0 and 10.0 U/mL  $\pm$  100 ng/mL rivaroxaban). PrestoBlue<sup>®</sup> (20  $\mu$ L) was added at time points 0, 24, 48, 72 and 96 h and, following incubation at 37°C for 1 h, fluorescence was measured using a FLUOstar Omega microplate reader (BMG Labtech). Appropriate vehicle controls were used throughout.

## 2.5 | Migration assay

Migration was quantified using the transwell migration assay. Cell culture inserts (8.0  $\mu$ m pores) were placed in empty 24 well plates and the upper chamber was primed with 200  $\mu$ L of serum-free media at 37°C. After 30 min this was replaced with  $5.0 \times 10^4$  DLD-1 cells suspended in 200  $\mu$ L serum-free, cell line-specific media containing exogenous coagulation factors  $\pm$  direct inhibitors (tissue factor 0, 50, 100 and 500 pg/mL  $\pm$  10  $\mu$ g/mL 10H10, thrombin 0.0, 0.1, 1.0 and 10.0 U/mL  $\pm$  0.5  $\mu$ M dabigatran and FXa 0.0, 0.1, 1.0 and 10.0 U/mL  $\pm$  100 ng/mL rivaroxaban). About 600  $\mu$ L of complete media supplemented with 10% FBS was added to the lower chamber as a chemoattractant. Following overnight incubation at 37°C, non-migratory cells were removed with a cotton bud and washed with phosphate-buffered saline. Migrated cells on the underside of the membrane were stained with crystal violet (Sigma-Aldrich). After 20 min, excess stain was removed and the inserts were allowed to dry overnight. The number of migrated cells were manually counted over nine random fields per well at 200 $\times$  magnification using light microscopy by a single scorer. Appropriate vehicle controls were used throughout.

## 2.6 | Statistical analysis

All experiments were performed in triplicate across three independent experiments. Statistical differences between continuous variables were determined using the independent Student's *t*-test or analysis of variance (ANOVA). *p* values <0.05 were considered significant. Statistical analysis was performed using GraphPad Prism version 7.0 (GraphPad Software).

## 3 | RESULTS

In this study the exogenous coagulation factors thrombin, FXa and TF were added to the colorectal cancer cell lines SW620 and DLD-1 to assess their effects on proliferation and migration in vitro. The datasets generated and analysed in this research article are available in the Figshare repository.<sup>26</sup>

### 3.1 | Proliferation

Thrombin at 10 U/mL increased proliferation of SW620 cells from 48 h onwards compared to vehicle control (Figure 1A). Thrombin at lower concentrations did not affect proliferation and did not affect proliferation in the DLD-1 cell line (Figure 1B).

FXa had no effect on proliferation in the SW620 cell line (Figure 1C), but increased proliferation of DLD-1 cells at a concentration of 1.0 U/mL from 48 h onwards (Figure 1D).

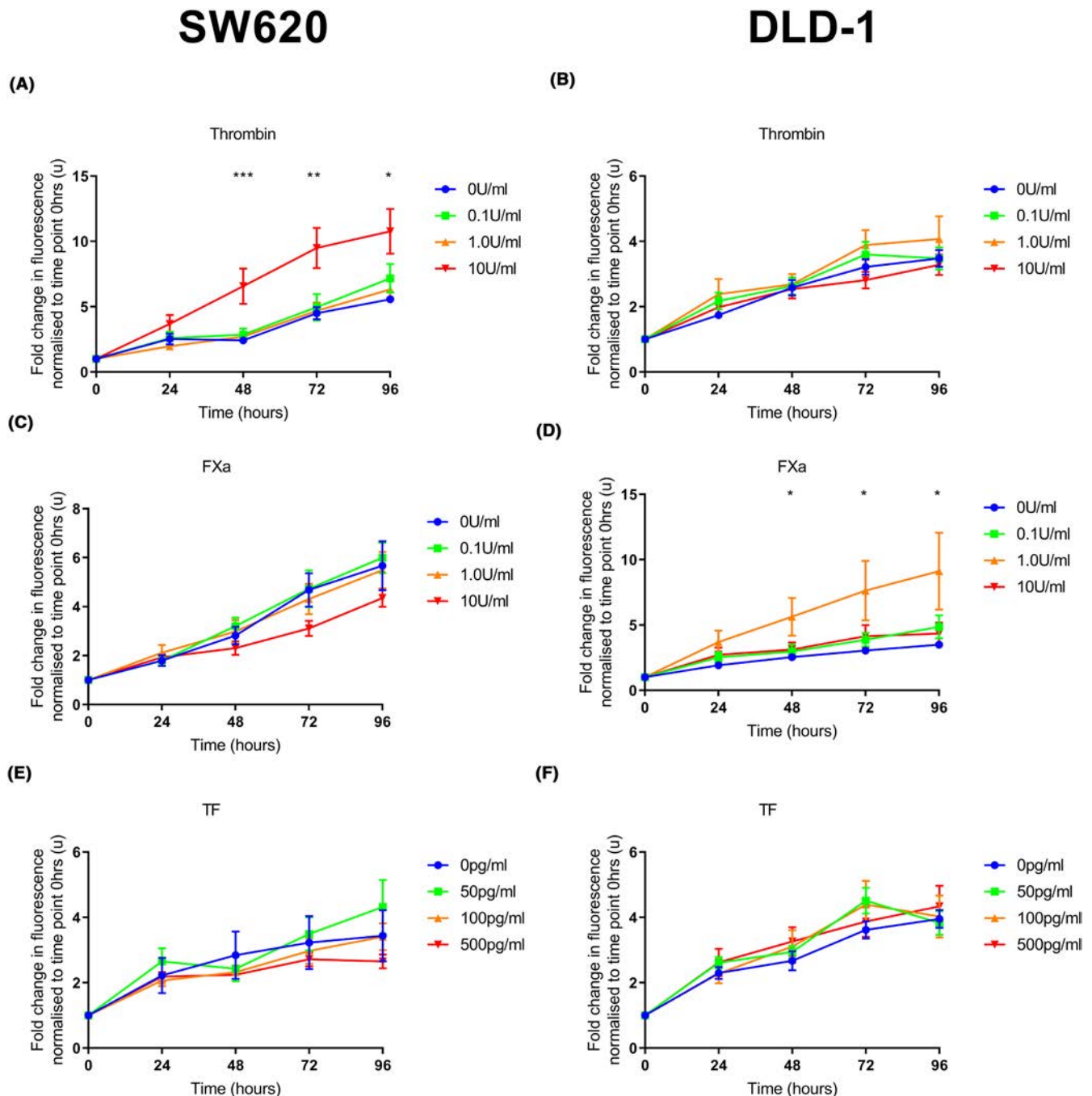
Exogenous TF had no effect on proliferation at the 50–500 pg/mL concentration range, which was chosen to reflect reported colorectal cancer patient plasma levels.<sup>27</sup> We did not increase the concentration of TF administered beyond this (Figure 1E,F).

The increase in proliferation induced by 10 U/mL thrombin was attenuated by dabigatran at 72 h treatment in the SW620 cell line (*p* < 0.05, Figure 2). This trend appeared to extend to 96 h but did not quite reach statistical significance.

The addition of rivaroxaban did not reduce the proliferative effects of 1.0 U/mL FXa in the DLD-1 cell line.

### 3.2 | Migration

Thrombin (10.0 U/mL, Figure 3A), FXa (10.0 U/mL, Figure 3B) and TF (50 pg/mL, Figure 3C) all increased migration in the DLD-1 cell line. However, the addition of dabigatran, rivaroxaban and 10H10 did not abrogate the pro-migratory effects of their respective coagulation factors (Figure 4).

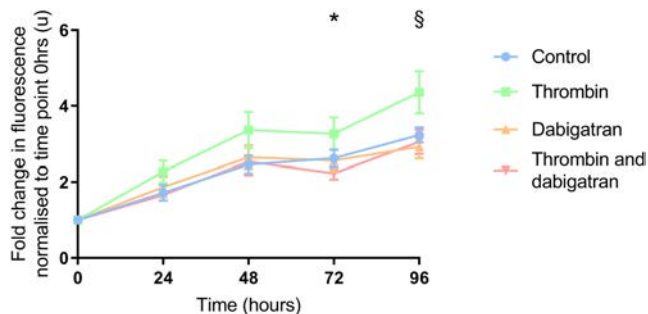


**FIGURE 1** The effect of exogenous coagulation factors on proliferation in colorectal cancer cell lines. SW620 or DLD-1 cells were seeded ( $5.0 \times 10^3$  and  $2.5 \times 10^3$  cells per well, respectively). Exogenous clotting factors were added at 24 h (thrombin 0.0–10 U/mL, FXa 0.0–10 U/mL or TF 0–500 pg/mL). PrestoBlue<sup>®</sup> was added at intervals and fluorescence was measured. (A) Thrombin (10 U/mL) increased proliferation from 48 h onwards compared to the vehicle control in the SW620 cell line. There was no difference in proliferation at lower concentrations of thrombin. (C, E) There was no difference in proliferation in the SW620 cell line following the addition of FXa or TF at any concentration compared to the vehicle control. (B, F) There was no difference in proliferation in the DLD-1 cell line following the addition of thrombin or TF at any concentration compared to the vehicle control. (D) FXa (1.0 U/mL) increased proliferation from 48 h onwards compared to the vehicle control in the DLD-1 cell line. There was no difference at other concentrations of FXa. Data presented as mean fold change in fluorescence normalised to time point 0 h  $\pm$  SEM. Data from at least three independent experiments. Statistical differences were determined using analysis of variance (ANOVA). \* $p < 0.05$ , \*\* $p < 0.01$ , \*\*\* $p < 0.001$ . TF, tissue factor.

## 4 | DISCUSSION

Evaluation of cancer cell lines by deep learning of multi-omics datasets has predicted SW620 to be a particularly

good model for colorectal cancer.<sup>28</sup> The ability of 10 U/mL thrombin to increase proliferation among SW620 colorectal cancer cells is supported by the findings of Darmoul et al. who reported increased in vitro proliferation in



**FIGURE 2** The effect of dabigatran on the pro-proliferative effects of thrombin. SW620 cells were seeded ( $2.5 \times 10^3$  per well). After 24 h treatment thrombin (10 U/mL)  $\pm$  dabigatran (0.5  $\mu$ M) was added. PrestoBlue<sup>®</sup> reagent was added at intervals and fluorescence was measured. The addition of dabigatran in combination with thrombin resulted in decreased proliferation compared to thrombin alone at 72 h. This continued at 96 h although did not reach statistical significance. Data presented as mean fold change in fluorescence normalised to time point 0 h  $\pm$  SEM. Data from three independent experiments. Statistical differences were determined using unpaired *t* tests. *P* values quoted correspond to comparison between thrombin alone and thrombin in combination with dabigatran. \**p* < 0.05, §*p* = 0.06.

colon cancer cell lines not including SW620 after 96 h of  $\sim$ 4 U/mL thrombin treatment.<sup>29</sup> Interestingly, SW620 has a relatively low level of PAR-1 (*F2R*) mRNA expression compared to DLD-1 but much higher levels of endogenous thrombin (*F2*) mRNA expression.<sup>30</sup> It is therefore possible that the combined endogenous thrombin generation of SW620 cells plus exogenous thrombin are together sufficient to produce the increased proliferation observed.

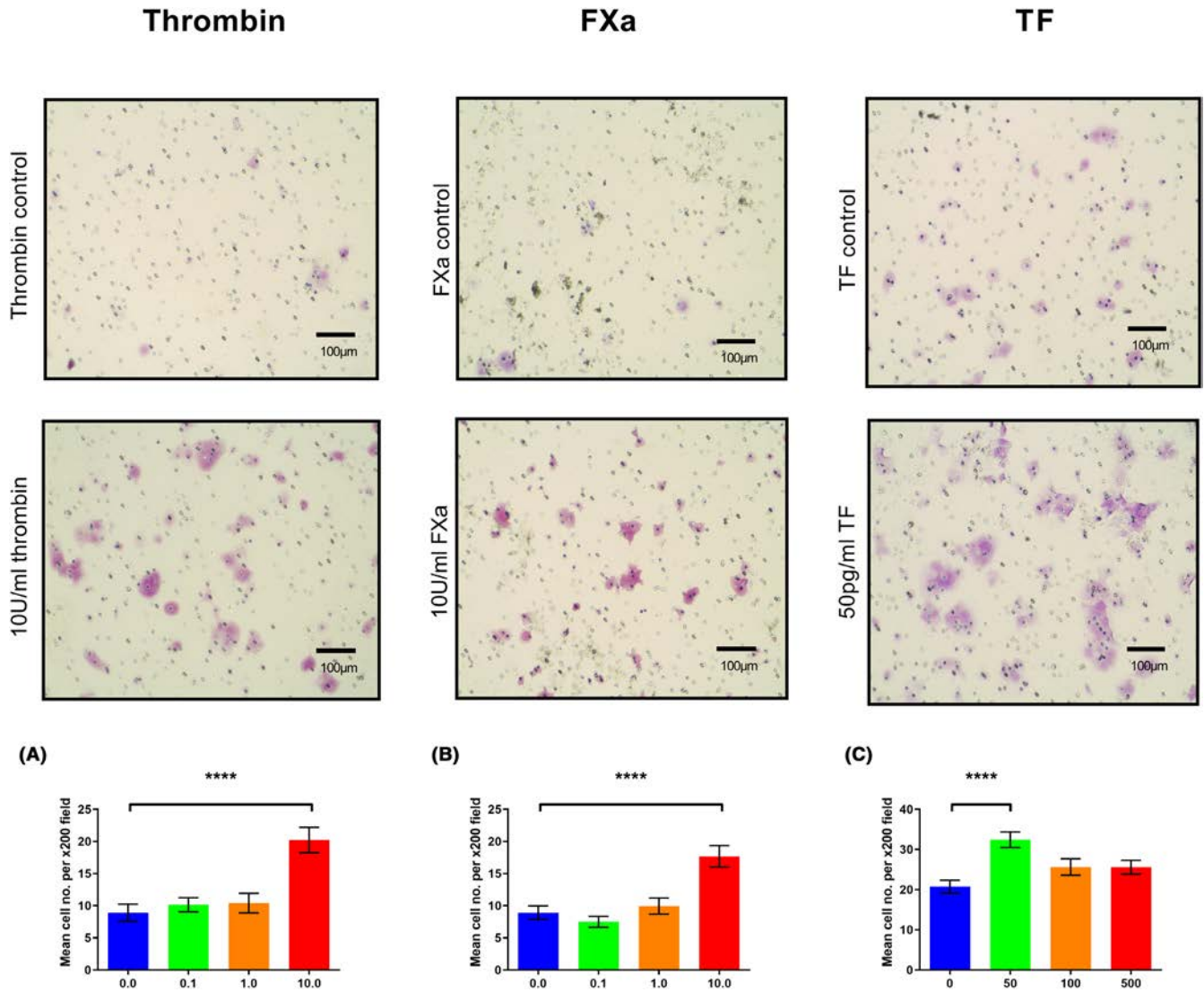
Similarly, the increase in cell proliferation observed in DLD-1 colorectal cancer cells treated with 1.0 U/mL FXa may in part be explained by the coagulation factor expression profile of these cells. DLD-1 has higher levels of tissue factor expression than SW620<sup>14</sup> that with the addition of its FXa co-factor may have produced a pro-proliferative response via PAR-2 (*F2RL1*), which is also expressed in higher levels in DLD-1 versus SW620.<sup>30</sup> The lack of increased proliferation at the higher FXa concentration of 10 U/mL may reflect previous observations that stimulation of cancer cell proliferation by coagulation factors forms a bell-shaped curve, with higher concentrations less effective at increasing growth.<sup>31</sup>

The absence of a pro-proliferative response in both SW620 and DLD-1 cells treated with tissue factor could indicate that the experiment concentrations based on colorectal cancer patient plasma levels (50–500 pg/mL<sup>27</sup>) were too low. We based the tissue factor concentrations on plasma levels as the marked increase in tissue factor expression in colorectal tumour epithelium and stroma compared to surrounding normal cells makes it very difficult to accurately quantify concentrations in tissue.<sup>32</sup>

Clinically, a speculated pro-proliferative response at a higher tissue factor level could indicate a change from a migrating phenotype to a proliferating one at a metastatic site where tissue factor levels are higher. However, the in vitro work of Zhou et al. using SW620 and our own unpublished work using breast cancer cells strongly suggests that simultaneous treatment of Factor VIIa alongside tissue factor is required to increase proliferation via PAR-2.<sup>33</sup> The higher gene expression of *F2RL1* (PAR-2) in colorectal carcinoma chemotherapy non-responders compared to responders in the publically available ROC Plotter resource may be an indication of pro-proliferative signalling via TF/FXa/FVIIa.<sup>34,35</sup>

The abrogation of a thrombin-induced increase in proliferation in SW620 cells by a clinically relevant dabigatran concentration is to our knowledge the first report of this direct oral anticoagulant (DOAC) having an anti-cancer effect in colorectal cancer. Graf et al. have reported a reduction in the in vivo tumour growth of MC38 mouse colon adenocarcinoma cell tumours using rivaroxaban. However, they ascribed this result to rivaroxaban blocking a reduction in anti-tumour immunity caused by FXa-producing myeloid cells, as evidenced by further reduction in tumour growth observed in checkpoint inhibitor plus rivaroxaban combination.<sup>19</sup> Our in vitro experiments do not recapitulate the colorectal cancer immune microenvironment, but the anti-proliferative effect we report here may support the case for further examination of dabigatran as an anti-cancer agent in colorectal cancer. A recent retrospective study observed colorectal cancer patients on dabigatran anticoagulation having lower risk of cancer-related death compared to CRC patients on rivaroxaban.<sup>36</sup> The authors suggested this may be due to strong expression of thrombin in colorectal cancer, as reported in our previous work.<sup>32</sup> The high endogenous expression of *F2* (thrombin) by SW620 supports this mechanism.

As far as we are aware, the increase in migration in DLD-1 cells treated with 10 U/mL thrombin is the first report of this functional effect in a mismatch repair deficient (MMRd) colorectal cancer model. MMRd is present in  $\sim$ 15% of colorectal cancers and is treated with immune checkpoint inhibitors in the metastatic setting.<sup>37</sup> This finding strengthens the case to combine direct oral anticoagulants with immune checkpoint inhibitors as proposed by Graf et al.<sup>19</sup> Previously, increased migration in MMR proficient HT29-D4 and SW480 human colon adenocarcinoma cells treated with  $\sim$ 2 and 0.5 U/mL thrombin, respectively, has been reported.<sup>29,38</sup> SW480 cells have a higher migratory potential than SW620 cells,<sup>39</sup> which may explain the lower pro-migratory thrombin concentrations previously observed.<sup>38</sup> Adams et al. have demonstrated using an in vivo MC38 murine colon adenocarcinoma cell model that prothrombin promoted local invasion and was



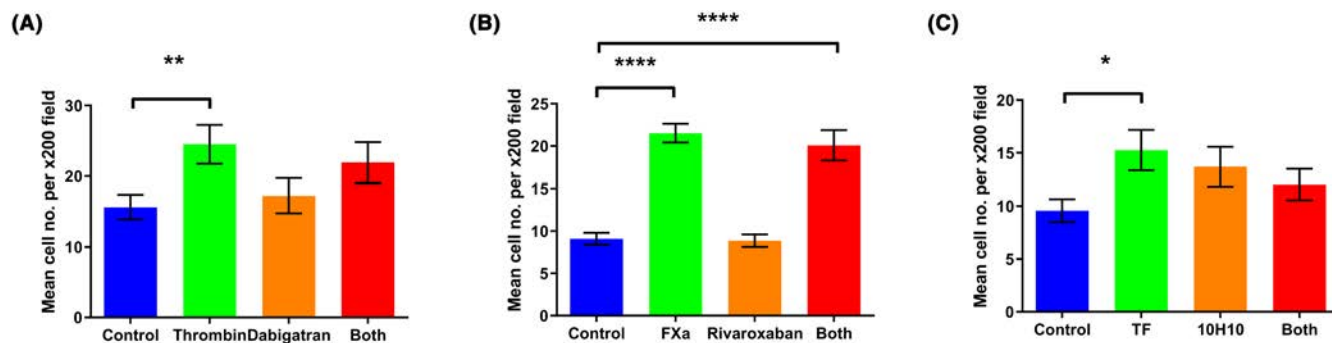
**FIGURE 3** The effect of exogenous coagulation factors on migration in the DLD-1 cell line.  $5.0 \times 10^4$  DLD-1 cells were placed in the upper chamber of cell culture inserts in serum-free conditions  $\pm$  exogenous clotting factors. Media supplemented with 10% FBS was added to the lower chamber. Following incubation and staining with crystal violet the number of migrating cells were quantified with light microscopy. (A–C) DLD-1 cells treated with 10 U/mL of thrombin, 10 U/mL of FXa and 50 pg/mL of TF, respectively, demonstrated increased migration compared to their vehicle controls. Data presented as mean number of migrated cells per  $\times 200$  field on light microscopy  $\pm$  SEM. Data from three independent experiments. Statistical differences were determined using analysis of variance (ANOVA). \*\*\*\* $p < 0.0001$ . Pictures demonstrate representative examples of  $\times 200$  views seen on light microscopy for vehicle controls and relevant concentrations of exogenous clotting factors. TF, tissue factor.

a major determinant of metastatic potential.<sup>24</sup> Our previous finding that thrombin and tissue factor are expressed in the stroma of colorectal cancer tumours suggests a possible source of a pro-migratory thrombin stimuli.<sup>32</sup>

We found that low concentration 0.1 U/mL FXa treatment did not affect DLD-1 migration within our results, (8.9 vs. 7.5 cells per  $\times 200$  field, n.s.) aligning with a possible inhibitory effect of FXa on colorectal cancer cell line migration at low concentrations previously reported.<sup>40</sup> However, high concentration 10 U/mL FXa treatment resulted in an almost twofold increase in DLD-1 migration compared to control, and although clinical colorectal

cancer FXa levels remain undetermined, this high concentration may better model the CRC hypercoagulable state. Given FXa is directly involved in thrombin generation and thrombin is pro-migratory,<sup>29,38</sup> clinically we would hypothesise that higher FXa levels lead directly/indirectly to increased colorectal cancer cell migration.

Our finding that 50 pg/mL tissue factor increases DLD-1 cell migration may be the first report of a stimulatory effect of exogenous TF in in vitro colorectal cancer models. Interestingly, we have found  $\sim 50$  pg/mL tissue factor to be the mean plasma concentration in colorectal cancer patients awaiting curative surgery (unpublished



**FIGURE 4** The effect of direct inhibitors on the pro-migratory effects of exogenous clotting factors in DLD-1 cells.  $5.0 \times 10^4$  DLD-1 cells were placed in the upper chamber of cell culture inserts in serum-free conditions  $\pm$  exogenous clotting factors  $\pm$  direct inhibitors. Media supplemented with 10% FBS was added to the lower chamber. Following incubation and staining with crystal violet the number of migrating cells were quantified with light microscopy. (A–C) The pro-migratory effects of thrombin, FXa and TF were not attenuated by their respective inhibitors. Data presented as mean number of migrated cells per  $\times 200$  field on light microscopy  $\pm$  SEM. Data from three independent experiments. Statistical differences were determined using independent Student's *t*-tests. \* $p < 0.05$ , \*\* $p < 0.01$ , \*\*\*\* $p < 0.0001$ . TF, tissue factor.

data from our group). This may indicate colorectal cancer cells such as DLD-1 receive a pro-migratory tissue factor stimuli when metastasising through the circulation. Furthermore, tissue factor-positive microparticles are present in higher levels in advanced colorectal cancer patient plasma than in age- and sex-matched controls.<sup>41</sup> Tian et al. have reported that tissue factor expression in colon cancer cell lines including DLD-1 is correlated with their invasive ability and TF knockdown in LoVo colon cancer cells reduces invasion/migration in vitro and hepatic metastasis in vivo through downregulation of matrix metalloproteinases MMP2 and MMP9.<sup>42</sup> As tissue factor positive microparticles and their inherent procoagulant activity may be transferred to cancer cells,<sup>43,44</sup> this presents another mechanism by which colorectal cells could obtain increased migratory/invasive properties in the tumour microenvironment/circulation, although we have not explored this here.

Surprisingly, none of the investigated direct inhibitors were able to abrogate the pro-migratory effects of the exogenous clotting factors during these experiments or reduce endogenous DLD-1 cell migration levels. We used concentrations of dabigatran and rivaroxaban based on standard clinical post-dose plasma levels (0.5  $\mu$ M and 100 ng/mL, respectively), but it may be that higher concentrations would have reduced cell motility in our model. Increased doses could be a clinically effective anti-migration treatment, but this would have to be investigated in clinical trials with clinical endpoints, balancing the potential anti-migration effect with the known side effects, the foremost being increased bleeding risk. Given the high interest of tissue factor-targeting antibody drug conjugates in colorectal cancer, interrogation of a potential anti-metastatic effect remains of clinical interest.

## 5 | CONCLUSIONS

In conclusion, the addition of exogenous coagulation factors promote the key cellular processes of migration and proliferation in vitro in CRC cell lines. Of particular note, dabigatran appears to abrogate the pro-proliferative effects of thrombin at a clinically relevant dose. This raises the exciting prospect of this commonly used anticoagulant as a potential anti-cancer therapy.

### AUTHOR CONTRIBUTIONS

**Peter Adam Rees:** Data curation (lead); formal analysis (lead); investigation (lead); methodology (lead); project administration (lead); visualization (lead); writing – original draft (lead). **John Castle:** Data curation (supporting); project administration (supporting); supervision (supporting); visualization (supporting); writing – review and editing (lead). **Hamish William Clouston:** Investigation (supporting); methodology (supporting); project administration (supporting); supervision (supporting). **Rebecca Lamb:** Formal analysis (supporting); investigation (supporting); methodology (supporting); project administration (supporting); resources (supporting); supervision (equal). **Urvashi Singh:** Writing – review and editing (supporting). **Sarah Elizabeth Duff:** Conceptualization (equal); funding acquisition (equal); resources (equal); supervision (equal). **Cliona Clare Kirwan:** Conceptualization (equal); funding acquisition (equal); resources (equal); supervision (equal).

### ACKNOWLEDGEMENTS

This work was in part supported by a 1-year research fellowship from the Royal College of Surgeons of England and a Medical Research Grant from the Bupa Foundation.



## DATA AVAILABILITY STATEMENT

The datasets generated and analysed in this research article are available in the Figshare repository [DOI [10.48420/22787444](https://doi.org/10.48420/22787444)].

## ORCID

John Castle  <https://orcid.org/0000-0001-8213-9775>

Urvashi Singh  <https://orcid.org/0000-0003-2176-5750>

Cliona Clare Kirwan  <https://orcid.org/0000-0002-1725-4790>

## REFERENCES

- Blom JW, Doggen CJ, Osanto S, Rosendaal FR. Malignancies, prothrombotic mutations, and the risk of venous thrombosis. *JAMA*. 2005;293:715-722.
- Stein PD, Beemath A, Meyers FA, Skaf E, Sanchez J, Olson RE. Incidence of venous thromboembolism in patients hospitalized with cancer. *Am J Med*. 2006;119:60-68.
- Cancer Research UK Bowel Cancer Statistics. Accessed December 22, 2022. <https://www.cancerresearchuk.org/health-professional/cancer-statistics/statistics-by-cancer-type/bowel-cancer>
- Alcalay A, Wun T, Khatri V, et al. Venous thromboembolism in patients with colorectal cancer: incidence and effect on survival. *J Clin Oncol*. 2006;24:1112-1118.
- Hoffman M, Monroe DM III. A cell-based model of hemostasis. *Thromb Haemost*. 2001;85:958-965.
- Seto S, Onodera H, Kaido T, et al. Tissue factor expression in human colorectal carcinoma: correlation with hepatic metastasis and impact on prognosis. *Cancer*. 2000;88:295-301.
- Shigemori C, Wada H, Matsumoto K, Shiku H, Nakamura S, Suzuki H. Tissue factor expression and metastatic potential of colorectal cancer. *Thromb Haemost*. 1998;80:894-898.
- Nakasaki T, Wada H, Shigemori C, et al. Expression of tissue factor and vascular endothelial growth factor is associated with angiogenesis in colorectal cancer. *Am J Hematol*. 2002;69:247-254.
- Yu JL, May L, Lhotak V, et al. Oncogenic events regulate tissue factor expression in colorectal cancer cells: implications for tumor progression and angiogenesis. *Blood*. 2005;105:1734-1741.
- Coughlin SR. Thrombin signalling and protease-activated receptors. *Nature*. 2000;407:258-264.
- Zhou H, Hu H, Shi W, Ling S, Wang T, Wang H. The expression and the functional roles of tissue factor and protease-activated receptor-2 on SW620 cells. *Oncol Rep*. 2008;20:1069-1076.
- Wu B, Zhou H, Hu L, Mu Y, Wu Y. Involvement of PKC $\alpha$  activation in TF/VIIa/ PAR2-induced proliferation, migration, and survival of colon cancer cell SW620. *Tumour Biol*. 2013;34:837-846.
- Zhou B, Zhou H, Ling S, et al. Activation of PAR2 or/and TLR4 promotes SW620 cell proliferation and migration via phosphorylation of ERK1/2. *Oncol Rep*. 2011;25:503-511.
- Clouston HW, Rees PA, Lamb R, Duff SE, Kirwan CC. Effect of tissue factor on colorectal cancer stem cells. *Anticancer Res*. 2018;38:2635-2642.
- Even-Ram SC, Maoz M, Pokroy E, et al. Tumor cell invasion is promoted by activation of protease activated receptor-1 in cooperation with the alpha v beta 5 integrin. *J Biol Chem*. 2001;276:10952-10962.
- Kamath L, Meydani A, Foss F, Kuliopulos A. Signaling from protease-activated receptor-1 inhibits migration and invasion of breast cancer cells. *Cancer Res*. 2001;61:5933-5940.
- Vrana JA, Stang MT, Grande JP, Getz MJ. Expression of tissue factor in tumor stroma correlates with progression to invasive human breast cancer: paracrine regulation by carcinoma cell-derived members of the transforming growth factor beta family. *Cancer Res*. 1996;56:5063-5070.
- D'Andrea MR, Derian CK, Santulli RJ, Andrade-Gordon P. Differential expression of protease-activated receptors-1 and -2 in stromal fibroblasts of normal, benign, and malignant human tissues. *Am J Pathol*. 2001;158:2031-2041.
- Graf C, Wilgenbus P, Pagel S, et al. Myeloid cell-synthesized coagulation factor X dampens antitumor immunity. *Sci Immunol*. 2019;4:4.
- Zacharski LR, Henderson WG, Rickles FR, et al. Effect of warfarin on survival in small cell carcinoma of the lung. Veterans administration study No. 75. *JAMA*. 1981;245:831-835.
- Kuderer NM, Khorana AA, Lyman GH, Francis CW. A meta-analysis and systematic review of the efficacy and safety of anticoagulants as cancer treatment: impact on survival and bleeding complications. *Cancer*. 2007;110:1149-1161.
- Akl EA, Gunukula S, Barba M, et al. Parenteral anticoagulation in patients with cancer who have no therapeutic or prophylactic indication for anticoagulation. *Cochrane Database Syst Rev*. 2011;CD006652.
- Sanford D, Naidu A, Alizadeh N, Lazo-Langner A. The effect of low molecular weight heparin on survival in cancer patients: an updated systematic review and meta-analysis of randomized trials. *J Thromb Haemost*. 2014;12:1076-1085.
- Adams GN, Rosenfeldt L, Frederick M, et al. Colon cancer growth and dissemination relies upon thrombin, stromal PAR-1, and fibrinogen. *Cancer Res*. 2015;75:4235-4243.
- Efficacy and Safety Study of Tisotumab Vedotin for Patients With Solid Tumors (innovaTV 207). Accessed December 22, 2022. <https://www.clinicaltrials.gov/ct2/show/NCT03485209>
- Rees PACJ, Clouston HW, Lamb R, Singh U, Duff SE, Kirwan CC. Raw Data for 'The effects of coagulation factors and their inhibitors on proliferation and migration in colorectal cancer'. 1st ed. Figshare Repository 2023 [10.48420/22787444](https://doi.org/10.48420/22787444)
- Beleva EA, Deneva TI, Stoencheva SS, Grudeva-Popova ZG. Longitudinal dynamics of coagulation and angiogenesis markers in cancer patients during and after chemotherapy. *Clin Appl Thromb Hemost*. 2021;27:10760296211056637.
- Ronen J, Hayat S, Akalin A. Evaluation of colorectal cancer subtypes and cell lines using deep learning. *Life Sci Alliance*. 2019;2:2.
- Darmoul D, Gratio V, Devaud H, Lehy T, Laburthe M. Aberrant expression and activation of the thrombin receptor protease-activated receptor-1 induces cell proliferation and motility in human colon cancer cells. *Am J Pathol*. 2003;162:1503-1513.
- DepMap Portal Expression 22Q2 Public. Accessed December 6, 2022. <https://depmap.org/portal/>
- Ahmad R, Knafo L, Xu J, Sindhu ST, Menezes J, Ahmad A. Thrombin induces apoptosis in human tumor cells. *Int J Cancer*. 2000;87:707-715.
- Clouston HW, Davenport A, Gregson H, Shaker H, Duff S, Kirwan CC. PO-51—expression of proteins of the tissue factor

- thrombin pathway is upregulated in the stroma and epithelium of colorectal cancer. *Thromb Res.* 2016;140(Suppl 1):S195.
33. Zhou H, Shi W, Zhou B, Guo D, Wang T. Tissue factor-factor VIIa regulates interleukin-8, tissue factor and caspase-7 expression in SW620 cells through protease-activated receptor-2 activation. *Mol Med Rep.* 2010;3:269-274.
  34. ROC Plotter for colorectal cancer. Accessed December 7, 2022. <https://www.rocplot.org/>
  35. Fekete JT, Gyorffy B. ROCplot.org: validating predictive biomarkers of chemotherapy/hormonal therapy/anti-HER2 therapy using transcriptomic data of 3,104 breast cancer patients. *Int J Cancer.* 2019;145:3140-3151.
  36. Lin YS, Kuan FC, Chao TF, et al. Mortality associated with the use of non-vitamin K antagonist oral anticoagulants in cancer patients: dabigatran versus rivaroxaban. *Cancer Med.* 2021;10:7079-7088.
  37. Jin Z, Sinicropo FA. Mismatch repair-deficient colorectal cancer: building on checkpoint blockade. *J Clin Oncol.* 2022;40:2735-2750.
  38. Chiang HS, Yang RS, Huang TF. Thrombin enhances the adhesion and migration of human colon adenocarcinoma cells via increased beta 3-integrin expression on the tumour cell surface and their inhibition by the snake venom peptide, rhodostomin. *Br J Cancer.* 1996;73:902-908.
  39. Slater C, De La Mare JA, Edkins AL. In vitro analysis of putative cancer stem cell populations and chemosensitivity in the SW480 and SW620 colon cancer metastasis model. *Oncol Lett.* 2018;15:8516-8526.
  40. Borensztajn K, Bijlsma MF, Reitsma PH, Peppelenbosch MP, Spek CA. Coagulation factor Xa inhibits cancer cell migration via protease-activated receptor-1 activation. *Thromb Res.* 2009;124:219-225.
  41. Hron G, Kollars M, Weber H, et al. Tissue factor-positive microparticles: cellular origin and association with coagulation activation in patients with colorectal cancer. *Thromb Haemost.* 2007;97:119-123.
  42. Tian M, Wan Y, Tang J, et al. Depletion of tissue factor suppresses hepatic metastasis and tumor growth in colorectal cancer via the downregulation of MMPs and the induction of autophagy and apoptosis. *Cancer Biol Ther.* 2011;12:896-907.
  43. Lima LG, Leal AC, Vargas G, Porto-Carreiro I, Monteiro RQ. Intercellular transfer of tissue factor via the uptake of tumor-derived microvesicles. *Thromb Res.* 2013;132:450-456.
  44. Shaker H, Rothmeier AS, Kirwan CC, Ruf W. OC-09—microparticle-mediated transfer of TF hypercoagulability between cancer cells. *Thromb Res.* 2016;140(Suppl 1):S172.

**How to cite this article:** Rees PA, Castle J, Clouston HW, et al. The effects of coagulation factors and their inhibitors on proliferation and migration in colorectal cancer. *Cancer Med.* 2023;12:17184-17192. doi:[10.1002/cam4.6332](https://doi.org/10.1002/cam4.6332)