

**Please cite the Published Version**

Trethowan, LA , Brambach, F , Cámara-Leret, R, Laumonier, Y, Sheil, D, Ferry Slik, JW , Webb, CO, Murdjoko, A, Bastian, ML, Kartawinata, K, Mansor, A, Mansur, M, Mirmanto, E, Nurtjahya, E, Permana, A, Rozak, AH , Wilkie, P, Rahmad, Z, Arifiani, D, Putu Gede, I, Puglisi, C, Asmarayani, R, Benu, NMH, Bramley, GLC, Dharma, W, Heatubun, CD, Hidayat, A, Kuswandi, R, Mathews, S, Megawati, Rustiami, H, Santika, Y, Santoso, W, Setiawan, E, Triono, T, Wambrauw, K, Wanma, JF, Hery Yanto, A, Siregar, M, Sadili, A, Dewi Atikah, T, Kintamani, E, Tjoa, A, Culmsee, H, Girmansyah, D, Gunawan, H, Pitopang, R, Utteridge, TMA, Morley, R, Schrader, J and Brearley, FQ  (2024) From earthquakes to island area: multi-scale effects upon local diversity. *Ecography*, 2024 (5). e07038 ISSN 0906-7590

**DOI:** <https://doi.org/10.1111/ecog.07038>

**Publisher:** Wiley

**Version:** Published Version

**Downloaded from:** <https://e-space.mmu.ac.uk/634857/>

**Usage rights:**  [Creative Commons: Attribution 4.0](https://creativecommons.org/licenses/by/4.0/)

**Additional Information:** This is an open access article which first appeared in *Ecography*, published by Wiley

**Data Access Statement:** Plot diversity metrics, coordinates and an Rmarkdown to recreate the manuscript and analysis are available from the Zenodo Digital Repository: <https://zenodo.org/doi/10.5281/zenodo.7989963> (Trethowan et al. 2024).







**Enquiries:**

If you have questions about this document, contact [openresearch@mmu.ac.uk](mailto:openresearch@mmu.ac.uk). Please include the URL of the record in e-space. If you believe that your, or a third party's rights have been compromised through this document please see our Take Down policy (available from <https://www.mmu.ac.uk/library/using-the-library/policies-and-guidelines>)

# ECOGRAPHY

## Research article

### From earthquakes to island area: multi-scale effects upon local diversity

Liam A. Trethowan<sup>1</sup>  <sup>1</sup>, Fabian Brambach<sup>2</sup> <sup>2</sup>, Rodrigo Cámara-Leret<sup>3</sup>, Yves Laumonier<sup>4</sup>, Douglas Sheil<sup>4,5</sup>, J. W. Ferry Slik<sup>6</sup> <sup>6</sup>, Campbell O. Webb<sup>7</sup>, Agustinus Murdjoko<sup>8</sup>, Meredith L. Bastian<sup>9</sup>, Kuswata Kartawinata<sup>10</sup>, Asryaf Mansor<sup>11</sup>, Muhammad Mansur<sup>12</sup>, Edi Mirmanto<sup>12</sup>, Eddy Nurtjahya<sup>13</sup>, Andrea Permana<sup>14</sup>, Andes H. Rozak<sup>15</sup> <sup>15</sup>, Peter Wilkie<sup>16</sup>, Zakaria Rahmad<sup>11</sup>, Deby Arifiani<sup>17</sup>, I. Putu Gede P. Damayanto<sup>17</sup>, Carmen Puglisi<sup>1,18</sup>, Rani Asmarayani<sup>17</sup>, Nithanel M. H. Benu<sup>19</sup>, Gemma L. C. Bramley<sup>1</sup>, Wira Dharma<sup>20</sup>, Charlie D. Heatubun<sup>1,8,21</sup>, Arief Hidayat<sup>17</sup>, Relawan Kuswandi<sup>12</sup>, Sarah Mathews<sup>22</sup>, Megawati<sup>23</sup>, Himmah Rustiami<sup>17</sup>, Yessi Santika<sup>17</sup>, Wahyudi Santoso<sup>23</sup>, Endro Setiawan<sup>24</sup>, Teguh Triono<sup>25</sup>, Calvin Wambrau<sup>26</sup>, Jimmy F. Wanma<sup>8</sup>, Acun Hery Yanto<sup>27</sup>, Mustaid Siregar<sup>12</sup>, Asep Sadili<sup>12</sup>, Tika Dewi Atikah<sup>12</sup>, Endang Kintamani<sup>12</sup>, Aiyen Tjoa<sup>28</sup>, Heike Culmsee<sup>29</sup>, Deden Girmansyah<sup>17</sup>, Hendra Gunawan<sup>12</sup>, Ramadanil Pitopang<sup>30</sup>, Timothy M. A. Utteridge<sup>1,31</sup>, Robert Morley<sup>32,33</sup>, Julian Schrader<sup>34</sup> and Francis Q. Brearley<sup>35</sup> 

#### Ecography

2024: e07038

doi: [10.1111/ecog.07038](https://doi.org/10.1111/ecog.07038)

Subject Editor: Thorsten Wiegand

Editor-in-Chief:

Dominique Gravel

Accepted 26 January 2024



[www.ecography.org](http://www.ecography.org)

<sup>1</sup>Herbarium Kew, London, UK

<sup>2</sup>Biodiversity, Macroecology and Biogeography, University of Göttingen, Göttingen, Germany

<sup>3</sup>Department of Systematic and Evolutionary Botany, University of Zurich, Zurich, Switzerland

<sup>4</sup>Center for International Forestry Research (CIFOR), Gunung Batu, Bogor, Indonesia

<sup>5</sup>Department of Environmental Sciences, Wageningen University and Research, Wageningen, the Netherlands

<sup>6</sup>Environmental and Life Sciences, Faculty of Science, Universiti Brunei Darussalam, Brunei Darussalam

<sup>7</sup>University of Alaska Museum of the North, Fairbanks, AK, USA

<sup>8</sup>Fakultas Kehutanan, Universitas Papua, Manokwari, Papua Barat, Indonesia

<sup>9</sup>Proceedings of the National Academy of Sciences, Washington, DC, USA

<sup>10</sup>Negaunee Integrative Research Center, The Field Museum, Chicago, IL, USA

<sup>11</sup>School of Biological Sciences, Universiti Sains Malaysia, Gelugor, Malaysia

<sup>12</sup>Research Center for Ecology and Ethnobiology, National Research and Innovation Agency (BRIN), Bogor, Indonesia

<sup>13</sup>Department of Biology, Universitas Bangka Belitung, Bangka, Indonesia

<sup>14</sup>Department of Psychology, University of Warwick, Coventry, UK

<sup>15</sup>Research Center for Plant Conservation, Botanic Gardens and Forestry, National Research and Innovation Agency (BRIN), Bogor, Indonesia

<sup>16</sup>Royal Botanic Gardens Edinburgh, Edinburgh, UK

<sup>17</sup>Research Center for Biosystematics and Evolution, National Research and Innovation Agency (BRIN), Bogor, Indonesia

<sup>18</sup>Missouri Botanical Garden, St. Louis, MS, USA

<sup>19</sup>Balai Penerapan Standar Instrumen Lingkungan Hidup dan Kehutanan Manokwari, Manokwari, Indonesia

<sup>20</sup>Department of Biology, Faculty of Mathematics and Natural Sciences, Universitas Syiah Kuala, Aceh, Indonesia

<sup>21</sup>Research and Development Agency, Manokwari, Indonesia

<sup>22</sup>Department of Biological Sciences, Louisiana State University, Baton Rouge, LA, USA

<sup>23</sup>Directorate of Scientific Collection Management, National Research and Innovation Agency (BRIN), Bogor, Indonesia

<sup>24</sup>Balai Taman Nasional Gunung Palung, Kalimantan Barat, Indonesia

<sup>25</sup>Wilmar Business Indonesia Polytechnic, Medan, Indonesia

<sup>26</sup>Reboisasi Eden Papua, Sorong, Indonesia

<sup>27</sup>Sustainability and Conservation Department, PT. Mayangkara Tanaman Industri, West Kalimantan, Indonesia

<sup>28</sup>Agriculture Faculty of Tadulako University, Palu, Indonesia

<sup>29</sup>University of Göttingen, Plant Ecology and Ecosystems Research, Göttingen, Germany

<sup>30</sup>Department of Biology, Faculty of Mathematics and Natural Sciences, Tadulako University, Palu, Indonesia

<sup>31</sup>Singapore Botanic Garden, Singapore, Singapore

<sup>32</sup>Palynova Ltd, Littleport, UK

<sup>33</sup>Earth Sciences Department, Royal Holloway, University of London, Egham, UK

<sup>34</sup>School of Natural Sciences, Macquarie University, Sydney, NSW, Australia

<sup>35</sup>Department of Natural Sciences, Manchester Metropolitan University, Manchester, UK

**Correspondence:** Liam A. Trethowan ([l.trethowan@kew.org](mailto:l.trethowan@kew.org))

Tropical forests occupy small coral atolls to the vast Amazon basin. They occur across bioregions with different geological and climatic history. Differences in area and bioregional history shape species immigration, extinction and diversification. How this effects local diversity is unclear. The Indonesian archipelago hosts thousands of tree species whose coexistence should depend upon these factors. Using a novel dataset of 215 Indonesian forest plots, across fifteen islands ranging in area from 120 to 785 000 km<sup>2</sup>, we apply Gaussian mixed effects models to examine the simultaneous effects of environment, earthquake proximity, island area and bioregion upon tree diversity for trees  $\geq 10$  cm diameter at breast height. We find that tree diversity declines with precipitation seasonality and increases with island area. Accounting for the effects of environment and island area we show that the westernmost bioregion Sunda has greater local diversity than Wallacea, which in turn has greater local diversity than easternmost Sahul. However, when the model includes geological activity (here proximity to major earthquakes), bioregion differences are reduced. Overall, results indicate that multi-scale, current and historic effects dictate tree diversity. These multi-scale drivers should not be ignored when studying biodiversity gradients and their impacts upon ecosystem function.

Keywords: biodiversity, biogeographic regions, diversity gradients, echo pattern, forest plots, island biogeography

## Introduction

The determinants of local species diversity are scale dependent (Willis and Whittaker 2002). Thus, local conditions interplay with large-scale speciation and extinction that controls the number of species that can disperse and persist in a community (Ricklefs and Schluter 1993, Zobel 1997, Spasojevic et al. 2018, Brodie et al. 2022, Trethowan et al. 2023a). In Indonesia and neighbouring countries, we find high plant species richness unmatched in other archipelagos (Joyce et al. 2020). There are many factors that may influence the country's local diversity (van Steenis 1950, Whitmore 1984). For example, island area and biogeographic history may influence diversification dynamics and thus the number of tree species that locally co-exist (Germain et al. 2016, Blonder et al. 2017, Craven et al. 2019, Kooyman et al. 2019, Herrera-Alsina et al. 2021, McCullough et al. 2022). Climate and local soil conditions, in turn, also influence local tree diversity (Slik et al. 2009, Laumonier and Nasi 2018). So far, however, our understanding of the multi-scale drivers of local plant diversity in tropical archipelagos has been limited (Brambach et al. 2017, Trethowan et al. 2020).

Tropical tree diversity at small spatial scales (e.g.  $< 10$  ha) may be determined by local environmental conditions (Ricklefs 1987). For instance, tree diversity declines with elevation because many species do not tolerate lower temperatures (Slik et al. 2009, Rehm and Feeley 2015, Brambach et al. 2017, Trethowan et al. 2023b). Likewise, seasonally dry

forests have lower diversity because fewer species can cope with extended periods of drought (Davidar et al. 2005, Baltzer et al. 2008). Infertile soils, similarly, may remove species with high nutrient requirements (Slik et al. 2009, Cámara-Leret et al. 2017, Draper et al. 2018). Indonesia is part of the largest tropical archipelago in the world and encompasses a wide range of environmental gradients: from mangroves to alpine grasslands and from constantly wet to seasonally dry (Kooyman et al. 2019, Trethowan et al. 2022). Therefore, Indonesia provides a great opportunity to study the relationship between environmental variation and local tree species diversity (Fig. 1a).

Additionally, the impacts of geological activity upon Indonesian diversity require attention. Volcanic eruptions and earthquakes may cause major species turnover events that could have an archipelago-wide impact upon current diversity (Lavigne et al. 2013, Whelley et al. 2015, Sadili et al. 2022).

Island area is often cited as a key driver of the number of species that can coexist locally (MacArthur and Wilson 1963, Karger et al. 2014, Ibanez et al. 2018, Schrader et al. 2019a, b). Larger islands support a larger species pool for local communities, which therefore have more potential species (Ricklefs 1987). This 'echo pattern' coined by Rosenzweig and Ziv (1999) also accounts for the fact that on larger islands species that go locally extinct may, over time, re-establish because they survived in neighbouring populations. Larger islands also have higher immigration rates (Brown and Kodric-Brown 1977) and are more likely to

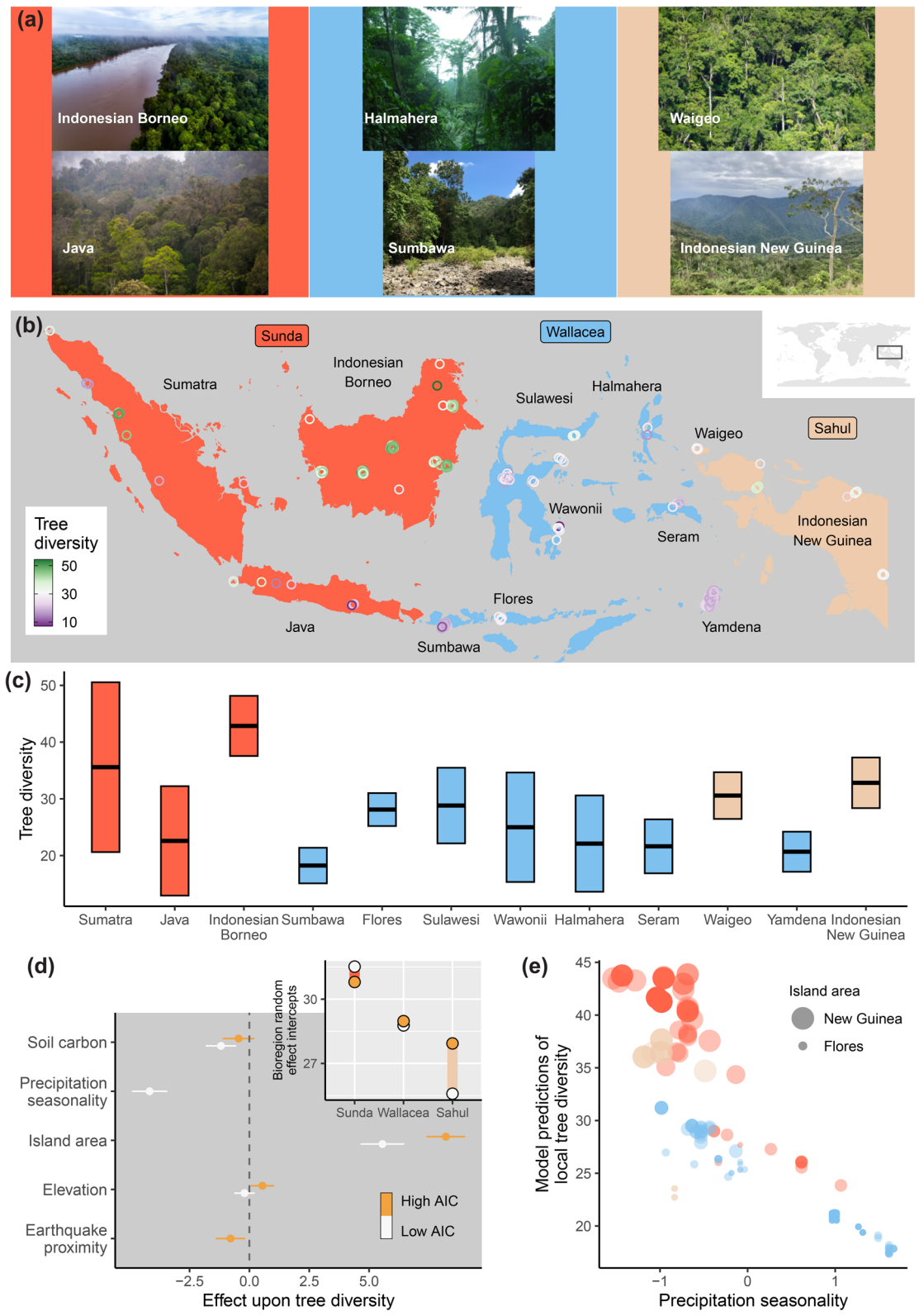


Figure 1. (a) Forests across Indonesia’s three bioregions. Top left wet lowland Central Kalimantan. Top middle wet lowland Halmahera. Top right wet lowland Waigeo. Bottom left Mount Salak, Java. Bottom middle seasonally dry forest West Sumbawa. Bottom right Arfak mountains, Indonesian New Guinea. (b) Map of Indonesian rarefied forest plot tree diversity and their global position (inset). (c) Rarefied tree diversity per island. Islands with single plots not shown. Boxplots represent island mean and SD diversity. (d)  $\pm 1$  SE (horizontal lines) for effects (points) of environmental variables, earthquake proximity and island area on local tree diversity in Indonesia. Both models either



Figure 1. (Continued)

with precipitation seasonality or earthquake proximity parameters are shown, hence single effects shown for these two parameters. Inset shows the random effect intercepts for bioregion across our two models. Point colour shows model prediction error as measured by the Akaike Information Criterion (AIC). (e) Mixed effect model predictions for local tree diversity in plots along the precipitation seasonality gradient, on islands of varying area, across three bioregions. Point opaqueness shows overlapping points. Photographers for (a): top left Nanang Sujana, CIFOR; top middle JS; top right JS; bottom left Mokhamad Edliadi, CIFOR; bottom middle LAT; bottom right LAT.

witness in situ speciation, increasing the pool of species available at local scales (Ricklefs 2004, Borges and Hortal 2009). Unlike tropical continental forests, island area effects could be prominent in tropical archipelagoes like Indonesia where there are numerous islands with considerable variation in size (Roos et al. 2004, Schrader et al. 2019b, Sin et al. 2022).

Geological history has left an imprint upon current diversity patterns across the world's biogeographic regions or 'bioregions' which we use here for brevity (Ricklefs and He 2016, Hagen et al. 2021, Herrera-Alsina et al. 2021). Indonesia straddles three island-dominated bioregions that differ in their histories of uplift, persistence above sea level and climate (Morley 2018a, Kooyman et al. 2019, Ali and Heaney 2021). Mesozoic emergence of the backbone of Sunda, the westernmost bioregion, preceded Java formed during the Pliocene (Hall 2009). Wet tropical forest became widespread across Sunda by the Miocene (Morley 2018b, Wilf et al. 2022). Sunda's land area fluctuated during the Quaternary when island connections increased during glacial and decreased during interglacials (Voris 2000, Cannon et al. 2009, Husson et al. 2020). The easternmost region of Sahul began to emerge in the Oligocene but formation of most of New Guinea's land area and central mountain range occurred in the late Miocene and Pliocene (Ufford and Cloos 2005, Toussaint et al. 2014). During Pleistocene glacial maxima, lower sea levels resulted in land connections between New Guinea and Australia, although Sahul was largely characterized by dry desert (Hope 1994, Byrne et al. 2008, Lohman et al. 2011, Toon et al. 2017). Sulawesi, the largest island in the central Wallacean region, amalgamated from a number of small islands in the Pliocene and Pleistocene, this was likely when Halmahera formed its current configuration (Hall et al. 1988, Nugraha and Hall 2018). Other Wallacean islands are even younger; Timor, Yamdena and Seram's uplift occurring in the late Pliocene (Hall 2009). Previous palynological and phylogenetic studies have mainly concerned the presence of lineages (Crayn et al. 2015, Morley 2018b, Yap et al. 2018, Hamilton et al. 2019, Kooyman et al. 2019). Here, we propose hypotheses that consider the impact of geological and climatic histories on diversity. The rapid recent formation of Wallacea and Sahul's environmental gradients could have promoted diversification and resulted in greater local diversity (Toussaint et al. 2014, Rowe et al. 2019, Kennedy et al. 2022, McCullough et al. 2022, Roycroft et al. 2022, Struebig et al. 2022). More likely, the longer residence time of terrestrial areas in Sunda may have resulted in the build-up of greater regional diversity, increasing the possible number of species able to coexist locally (de Bruyn et al. 2014, O'Connell et al. 2018). Added to that, widespread drought during glacial maxima except for

equatorial Sunda likely caused the extinction of many tropical species in Wallacea and Sahul (Morley 1981, Cannon and Manos 2003, Cannon et al. 2009, Byrne et al. 2011, Hamilton et al. 2019, Wurster et al. 2019). Whilst the legacy of paleoclimate and bioregion has recently been shown to influence vertebrate distributions (Skeels et al. 2023), we do not have a clear idea of effects upon local diversity.

Here we test predictions that local tree diversity 1) declines with elevation, precipitation seasonality, soil infertility and geological activity, 2) increases with island area and 3) is greater in the older geological and climatically stable setting of Sunda compared to Wallacea and Sahul. We therefore test the fine-scale effects of prediction (1) and large-scale, historic, species-pool effects of predictions (2) and (3): allowing examination of these predictions, in cohort, for the first time across a megadiverse region.

## Material and methods

Species/morphospecies abundance lists were compiled for trees  $\geq 10$  cm diameter, from 215 georeferenced plots (Fig. 1b), ranging in size from 0.2 to 10.5 ha (plot metadata and reference list in the Supporting information) across Weh (1 plot), Sumatra (8), Bangka (1), Java (10), Indonesian Borneo (42), Sumbawa (14), Flores (4), Sulawesi (22), Buton (1), Wawonii (6), Halmahera (2), Seram (5), Yamdena (64), Waigeo (4) and Indonesian New Guinea (11) (Brearley et al. 2019). Accepted species names followed the world checklist of vascular plants (Govaerts et al. 2021, Walker 2021). Our diversity metric was rarefied Hill diversity akin to species richness (Chao et al. 2014). The rarefied metric was equivalent to the diversity we would expect if plots had the same number of individuals as the plot with the fewest, in this case 60. Rarefaction allowed us to account for differences in numbers of individuals per plot and therefore compare plots of different sizes (Hsieh et al. 2016). This rarefied diversity metric is henceforth termed 'diversity'. To determine if rarefaction impacted our results we also calculated diversity indices equivalent to that found for 100, 200 and 300 individuals across all plots and repeated analyses below using these data as response variables (Hsieh et al. 2016).

We examined the drivers of local tree diversity in Indonesia with a Gaussian mixed effects model and an identity link function. Tree diversity was modelled as a function of island area (total island area used for Borneo and New Guinea as these differ from the Indonesian border) and environmental variables (elevation, precipitation seasonality and soil carbon). These environmental variables were chosen because they have been shown to influence tropical tree diversity (Baltzer et al.

2008, Brambach et al. 2017, Draper et al. 2018) and were the largest independent contributors (Supporting information) to the three principal component axes that represented 85% variability in mean annual temperature, temperature range, elevation, mean annual precipitation, precipitation seasonality, soil nitrogen, soil carbon and soil cation exchange capacity taken from SRTM, WorldClim and SoilGrids databases (Farr et al. 2007, Exposito-Alonso 2017, Hengl et al. 2017). When the three selected variables, elevation, precipitation seasonality and soil carbon were included in the model, alongside island area, all predictor variance inflation factors (VIFs) were below 1.7 (Supporting information), indicating a lack of covariation amongst predictors. Given that we also wanted to test how geological activity affected diversity, we also built a model where precipitation seasonality was replaced with earthquake proximity, as parameters for this model had VIFs below 1.7 (Supporting information). We used proximity to earthquakes rather than volcanoes, as VIFs for the model parameterised with volcano proximity exceeded 1.7. All predictors were scaled, as z-scores, prior to analysis to allow effect score comparison. Proximity to earthquakes ( $> 7.5$  Richter magnitude since 2150 BC) and volcanoes was calculated from the NGDC/WDS databases (Service 2023a, b). Volcano data were expanded with data from Whelley et al. (2015). We also included a random intercept for bioregions (Sunda, Wallacea or Sahul). Bioregions follow the concept first outlined by Heilprin and Darlington (Fig. 1b, Ali and Heaney 2021). This reflected the different climatic and geological histories found between bioregions (Supporting information). Model residuals did not show spatial dependence (Moran's I test both  $p > 0.5$ , Hartig 2021). Finally, prediction error, using the Akaike Information Criterion, was compared between models parameterised either by precipitation seasonality and earthquake proximity.

## Results

Mean diversity per island was lowest in the seasonally dry forests of Sumbawa (diversity = 18.24 and SE = 0.44) and highest in the wet forests of Kalimantan (diversity = 42.85 and SE = 6.00) (Fig. 1c). The model parameterised by precipitation seasonality found a negative effect of precipitation seasonality and soil carbon and a positive effect of island area on local tree diversity (precipitation seasonality effect =  $-4.17$  and SE = 0.74, soil carbon effect =  $-1.19$  and SE = 0.64, island area effect = 5.56 and SE = 0.92, Fig. 1d). There was no effect of elevation (effect =  $-0.21$  and SE = 0.43). The model parameterised by earthquake proximity showed a small negative effect of soil carbon and a positive effect of island area upon local tree diversity (soil carbon effect =  $-0.45$  and SE = 0.66, island area effect = 8.21 and SE = 0.8, Fig. 1d). Elevation had a small positive effect on local tree diversity, whereas earthquake proximity had a small negative effect (elevation effect = 0.55 and SE = 0.49, earthquake proximity effect =  $-0.79$  and SE = 0.61).

Random effect intercepts for the precipitation seasonality model suggested that bioregion was strongly associated

with tree diversity. The highest effects were in Sunda (intercept = 31.52) followed by Wallacea (28.78) and then Sahul (25.59, Fig. 1d inset). This suggests that in Sahul diversity is lower than would be predicted by environmental variables and island area alone (Fig. 1e). Likewise, for a given value of island area and environmental variable, Wallacea has lower diversity than Sunda (but higher than Sahul). The bioregion random effect explained approx. 19% of variation in tree diversity. However, when earthquake proximity was included in the model, differences amongst bioregions were reduced (7% variation in diversity explained, Fig. 1d inset).

The model parameterised by precipitation seasonality that also had larger differences between bioregions according to random effect intercepts was more precise than the model that showed smaller differences between bioregions and was parameterised by earthquake proximity (precipitation seasonality model AIC 29 less than earthquake proximity model, Fig. 1d).

Results repeated with diversity metrics equivalent to 100, 200 and 300 did not show large differences from that calculated from 60 individuals (Supporting information).

## Discussion

Here, we have analysed 215 forest plots across fifteen major islands of the Indonesian archipelago and shown that local tree diversity appears to be influenced by fine-scale local environment and proximity to earthquakes, and by large-scale drivers of island area and bioregion.

The physiological limits imposed by drought should be detrimental to the number of tropical trees able to co-exist locally (Baltzer et al. 2008, Baltzer and Davies 2012). Our results showing declining diversity with precipitation seasonality indicate that drought effects are relevant across large scales.

We did not find a clear relationship between elevation and diversity, perhaps caused by our plots not spanning sufficiently high elevations to detect diversity tail-off. Alternatively, it may be due to differing mountain topography, where dependent upon how/if mountains taper, large-scale diversity-elevation relationships can differ from monotonic decline in richness to an increase (Elsen and Tingley 2015). For instance, the central New Guinea highlands have a 'diamond' shaped topography where area is greatest at mid-elevations (Elsen and Tingley 2015). Similarly, mountain species pools may not necessarily decline linearly with elevation (Bachman et al. 2004, Whitman et al. 2021). Our results suggest that mountain species pools, rather than elevation per se, could be a major driver of local diversity (Rosenzweig 1995). This could also be reflected across different habitats. For instance, in the Amazon low soil nutrient habitats are locally rich if that habitat is widely distributed and vice versa high nutrient habitat with a small species pool can show low diversity (ter Steege et al. 2023).

We have shown how important island area and linked species pool size variation (Zobel 1997) are for local tropical tree diversity. These patterns are therefore key to understanding

drivers of diversity of the tropical ecosystems where most global diversity exists. Larger islands have more species and can therefore support more species at local scales (Rosenzweig and Ziv 1999, Roos et al. 2004). To examine this further we require more baseline floristic data from Indonesia and neighbouring countries. First, we need to accelerate the production of expert-led species checklists and taxonomic revisions across the region (Cámara-Leret et al. 2020, Joyce et al. 2020, Rustiami et al. 2020). Despite taxonomic information being critical to identify tree individuals from forest plots, many big tropical genera still remain taxonomically neglected (Frodin 2004). Second, better interdisciplinary collaboration among ecologists and taxonomists is needed. This will be important for ecologists who want to have high-grade vouchers (Baker et al. 2017), and for systematists who seek to understand what drives trait variation across the archipelago. The growth of dual expert-verified data would allow examination of island species–area relationships and their dependence upon environmental variation between and within islands.

Here we have assumed that larger islands have larger species pools. However, equally species-rich pools may differ in the diversity of traits that they support (Spasojevic et al. 2018). Traits determine species ability to persist in an environment so the trait pool should better reflect the number of species that can occur at small scales (Spasojevic et al. 2018, Schrader et al. 2021). Likewise, the overall dispersal capacity of pools should shape how many species can disperse into and occur at sites (Xie et al. 2023). Exploration of these potential patterns would require the collation and analysis of trait data linked to dispersal and adaptation to environment, such as height, leaf and fruit size (Wright et al. 2017, Olson et al. 2018, Brodie et al. 2022, Trethowan et al. 2022, 2023a).

Our results suggest an influence of biogeographic history upon local tropical tree diversity. We find a decrease with longitude from Sunda to Sahul rather than clear differences between the ancient geological region of Sunda and younger Wallacea and Sahul. This could reflect increasing distance from the wet tropical source pool of mainland Southeast Asia, as opposed to Australia where Neogene aridification drove widespread extinction of rainforest taxa (Byrne et al. 2011, Kooyman et al. 2019). Heightened diversity with closer proximity to the western source pool suggests that dispersal distances have been crucial for the formation of modern diversity in Indonesia (MacArthur and Wilson 1963). Greater chance of tropical lineage dispersal, from the western source pool, also promotes their opportunities for diversification (Crayn et al. 2015, Morley 2018b, Atkins et al. 2019, Kooyman et al. 2019). In the western bioregions, this presumably increased the proportion of species adapted to tropical conditions. Here, these species that are pre-adapted to modern conditions are less likely to be outcompeted, and potentially a greater number of species can coexist (Harrison and Cornell 2008, Swenson et al. 2023). However, our model incorporating geological activity showed reduced differences in local diversity explained by bioregion. Regional geology causing non-climatic differences between bioregions, e.g. via earthquake frequency, is therefore likely important for local diversity.

We have shown, for the first time, how local tree diversity varies across Indonesia. With this new Indonesian plot-based data, future global studies of local tree diversity will have an opportunity to better cover the entirety of the tropics (Parmentier et al. 2007, Sullivan et al. 2017, Cazzolla Gatti et al. 2022, ter Steege et al. 2023). Local and indigenous groups in Indonesia have interacted with plants for millennia and still use thousands of species (Sheil and Salim 2012, Sheil et al. 2012, Cámara-Leret and Dennehy 2019), so further studies of humankind's ecological legacies on the archipelago's forests are warranted (Hamilton et al. 2021). However, more forest plot-based data are still needed. Sampling of the large, forested areas in southeast Sulawesi, Flores, Sumba and Indonesian New Guinea should remain a priority, including coverage of high elevations and extreme ultramafic and karstic soils (Galey et al. 2017, Geekiyanage et al. 2019, Brambach et al. 2020).

Diversity is key for the functioning of ecosystems (Jucker et al. 2014, van der Plas et al. 2018). We have highlighted here how for a megadiverse tree flora the parameters of diversity vary from the fine-scale and modern to the large-scale and historic. Therefore, studies that forecast diversity, including those that use the results to predict alteration of ecosystem function, should integrate relevant multi-scale parameters across space and time.

*Acknowledgements* – We thank all our colleagues and field assistants who helped with forest plot censuses across Indonesia over many years. We are particularly grateful to our late colleagues: George Argent, David Frodin, John Proctor, Soedarsono Riswan, Kade Sidiyasa, Suriantata and Tim Whitmore whose work contributed to this manuscript and who made broader contributions to our understanding of Indonesian biogeography and ecology. We acknowledge the research permits provided by LIPI, RisTek and BRIN for work in Indonesia over many years: 88/SIP/FRP/E5/Dit.KI/11/2016, 351/E5/E5.4/SIP/2019, 149/SIP/IV/FR/3/2023 (LAT), 5244/V.3/KS/1998, 3943/V3/KS/1999, 2010/IPH.1/KS.01/2005, 1790/FRP/SM/VIII/2008 (FQB), 034/SIP/FRP/II/2011 (FB), 385/SIP/FRP/E5/Dit.KI/IX/2016 (RCL), 0251/SIP/FRP/XI/2010 (and extensions) (COW). In addition, we thank forestry departments across Indonesia for granting SIMAKSI paperwork for access to protected areas.

*Funding* – LAT was supported by the Botanical Research Fund, Coalbourn Trust, Bentham Moxon Trust and Emily Holmes scholarships. FQB and colleagues were supported by the British Council grant no. 217539700. TMAU and GLCB were supported by NERC/Newton fund grant no. NE/S007059/1.

## Author contributions

**Liam A. Trethowan:** Conceptualization (lead); Data curation (lead); Formal analysis (lead); Writing – original draft (lead); Writing – review and editing (lead). **Fabian Brambach:** Data curation (supporting); Visualization (supporting); Writing – review and editing (supporting). **Rodrigo Cámara Leret:** Formal analysis (supporting); Visualization (supporting); Writing – original draft (supporting); Writing – review and editing (supporting). **Yves Laumonier:** Data curation (supporting); Writing – review and editing (supporting). **Douglas**



**Sheil:** Data curation (supporting); Writing – review and editing (supporting). **J. W. Ferry Slik:** Data curation (supporting); Writing – original draft (supporting); Writing – review and editing (supporting). **Campbell O. Webb:** Data curation (supporting); Formal analysis (supporting); Writing – original draft (supporting); Writing – review and editing (supporting). **Agustinus Murdjoko:** Data curation (supporting); Writing – review and editing (supporting). **Meredith L. Bastian:** Data curation (supporting); Writing – review and editing (supporting). **Kuswata Kartawinata:** Data curation (supporting); Writing – review and editing (supporting). **Asryaf Mansor:** Data curation (supporting); Writing – review and editing (supporting). **Muhammad Mansur:** Data curation (supporting); Writing – review and editing (supporting). **Edi Mirmanto:** Data curation (supporting); Writing – review and editing (supporting). **Eddy Nurtjahya:** Data curation (supporting); Writing – review and editing (supporting). **Andrea Permana:** Data curation (supporting); Writing – review and editing (supporting). **Andes H. Rozak:** Data curation (supporting); Writing – review and editing (supporting). **Peter Wilkie:** Data curation (supporting). **Zakaria Rahmad:** Data curation (supporting). **Deby Arifiani:** Data curation (supporting); Writing – review and editing (supporting). **I. Putu Gede P. Damayanto:** Data curation (supporting); Writing – review and editing (supporting). **Carmen Puglisi:** Data curation (supporting); Writing – review and editing (supporting). **Rani Asmarayani:** Data curation (supporting); Writing – review and editing (supporting). **Nithanel M. H. Benu:** Data curation (supporting). **Gemma L. C. Bramley:** Data curation (supporting); Writing – review and editing (supporting). **Wira Dharma:** Data curation (supporting). **Charlie D. Heatubun:** Data curation (supporting). **Arief Hidayat:** Data curation (supporting). **Relawan Kuswandi:** Data curation (supporting). **Sarah Matthews:** Data curation (supporting). **Megawati:** Data curation (supporting). **Himmah Rustiami:** Data curation (supporting); Writing – review and editing (supporting). **Yessi Santika:** Data curation (supporting). **Wahyudi Santoso:** Data curation (supporting). **Endro Setiawan:** Data curation (supporting). **Teguh Triono:** Data curation (supporting). **Kalvin Wambrau:** Data curation (supporting). **Jimmy F. Wanma:** Data curation (supporting). **Acun Hery Yanto:** Data curation (supporting). **Mustaid Siregar:** Data curation (supporting). **Asep Sadili:** Data curation (supporting). **Tika Dewi Atika:** Data curation (supporting). **Endang Kintamani:** Data curation (supporting). **Aiyen Tjoa:** Data curation (supporting). **Heike Culmsee:** Data curation (supporting). **Deden Girmansyah:** Data curation (supporting). **Hendra Gunawan:** Data curation (supporting); Writing – review and editing (supporting). **Ramadhanil Pitopang:** Data curation (supporting); **Timothy M. A. Utteridge:** Writing – review and editing (supporting). **Robert Morley:** Writing – review and editing (supporting). **Julian Schrader:** Conceptualization (supporting); Formal analysis (supporting); Writing – original draft (supporting); Writing – review and editing (supporting). **Francis Q. Brearley:** Conceptualization (supporting); Data curation (supporting); Funding acquisition (equal); Writing – original draft (supporting); Writing – review and editing (supporting).

## Transparent peer review

The peer review history for this article is available at <https://publons.com/publon/10.1111/ecog.07038>.

## Data availability statement

Plot diversity metrics, coordinates and an Rmarkdown to recreate the manuscript and analysis are available from the Zenodo Digital Repository: <https://zenodo.org/doi/10.5281/zenodo.7989963> (Trethowan et al. 2024).

## Supporting information

The Supporting information associated with this article is available with the online version.

## References

- Ali, J. R. and Heaney, L. R. 2021. Wallace's line, Wallacea, and associated divides and areas: history of a tortuous tangle of ideas and labels. – *Biol. Rev.* 96: 922–942.
- Atkins, H. J., Bramley, G. L. C., Johnson, M. A., Kartonegoro, A., Nishii, K., Kokubugata, G., Moeller, M. and Hughes, M. 2019. A molecular phylogeny of Southeast Asian *Cyrtandra* (Gesneriaceae) supports an emerging paradigm for Malesian plant biogeography. – *Front. Biogeogr.* 12: e44814.
- Bachman, S., Baker, W. J., Brummitt, N., Dransfield, J. and Moat, J. 2004. Elevational gradients, area and tropical island diversity: an example from the palms of New Guinea. – *Ecography* 27: 299–310.
- Baker, T. R., Pennington, R. T., Dexter, K. G., Fine, P. V., Fortune-Hopkins, H., Honorio, E. N., Huamantupa-Chuquimaco, I., Klitgaard, B. B., Lewis, G. P. and Lima, H. C. de. 2017. Maximising synergy among tropical plant systematists, ecologists, and evolutionary biologists. – *Trends Ecol. Evol.* 32: 258–267.
- Baltzer, J. L. and Davies, S. J. 2012. Rainfall seasonality and pest pressure as determinants of tropical tree species' distributions. – *Ecol. Evol.* 2: 2682–2694.
- Baltzer, J. L., Davies, S. J., Bunyavejchewin, S. and Noor, N. S. M. 2008. The role of desiccation tolerance in determining tree species distributions along the Malay–Thai peninsula. – *Funct. Ecol.* 22: 221–231.
- Blonder, B., Moulton, D. E., Blois, J., Enquist, B. J., Graae, B. J., Macias-Fauria, M., McGill, B., Nogué, S., Ordóñez, A., Sandel, B. and Svenning, J. C. 2017. Predictability in community dynamics. – *Ecol. Lett.* 20: 293–306.
- Borges, P. A. V. and Hortal, J. 2009. Time, area and isolation: factors driving the diversification of Azorean arthropods. – *J. Biogeogr.* 36: 178–191.
- Brambach, F., Leuschner, C., Tjoa, A. and Culmsee, H. 2017. Diversity, endemism, and composition of tropical mountain forest communities in Sulawesi, Indonesia, in relation to elevation and soil properties. – *Perspect. Plant Ecol. Syst.* 27: 68–79.
- Brambach, F., Leuschner, C., Tjoa, A. and Culmsee, H. 2020. Predominant colonization of Malesian mountains by Australian tree lineages. – *J. Biogeogr.* 47: 355–370.
- Brearley, F. Q. et al. 2019. Opportunities and challenges for an Indonesian forest monitoring network. – *Ann. For. Sci.* 76: 54.
- Brodie, J. F., Henao-Diaz, L. F., Pratama, B., Copeland, C., Wheeler, T. and Helmy, O. E. 2022. Fruit size in Indo-Malayan island plants is more strongly influenced by filtering than by in situ evolution. – *Am. Nat.* 201: 574–585.



- Brown, J. H. and Kodric-Brown, A. 1977. Turnover rates in insular biogeography: effect of immigration on extinction. – *Ecology* 58: 445–449.
- Byrne, M., Yeates, D. K., Joseph, L., Kearney, M., Bowler, J., Williams, M. A. J., Cooper, S., Donnellan, S. C., Keogh, J. S., Leys, R., Melville, J., Murphy, D. J., Porch, N. and Wyrwoll, K. H. 2008. Birth of a biome: insights into the assembly and maintenance of the Australian arid zone biota. – *Mol. Ecol.* 17: 4398–4417.
- Byrne, M., Steane, D. A., Joseph, L., Yeates, D. K., Jordan, G. J., Crayn, D., Aplin, K., Cantrill, D. J., Cook, L. G., Crisp, M. D., Keogh, J. S., Melville, J., Moritz, C., Porch, N., Sniderman, J. M. K., Sunnucks, P. and Weston, P. H. 2011. Decline of a biome: evolution, contraction, fragmentation, extinction and invasion of the Australian mesic zone biota. – *J. Biogeogr.* 38: 1635–1656.
- Cámara-Leret, R. and Dennehy, Z. 2019. Information gaps in indigenous and local knowledge for science-policy assessments. – *Nat. Sustain.* 2: 736–741.
- Cámara-Leret, R., Tuomisto, H., Ruokolainen, K., Balslev, H. and Munch Kristiansen, S. 2017. Modelling responses of western Amazonian palms to soil nutrients. – *J. Ecol.* 105: 367–381.
- Cámara-Leret, R. et al. 2020. New Guinea has the world's richest island flora. – *Nature* 584: 579–583.
- Cannon, C. H. and Manos, P. S. 2003. Phylogeography of the Southeast Asian stone oaks (*Lithocarpus*). – *J. Biogeogr.* 30: 211–226.
- Cannon, C. H., Morley, R. J. and Bush, A. B. G. 2009. The current refugial rainforests of Sundaland are unrepresentative of their biogeographic past and highly vulnerable to disturbance. – *Proc. Natl Acad. Sci. USA* 106: 11188–11193.
- Cazzolla Gatti, R. et al. 2022. The number of tree species on earth. – *Proc. Natl Acad. Sci. USA* 119: e2115329119.
- Chao, A., Gotelli, N. J., Hsieh, T. C., Sander, E. L., Ma, K. H., Colwell, R. K. and Ellison, A. M. 2014. Rarefaction and extrapolation with hill numbers: a framework for sampling and estimation in species diversity studies. – *Ecol. Monogr.* 84: 45–67.
- Craven, D., Knight, T. M., Barton, K. E., Bialic-Murphy, L. and Chase, J. M. 2019. Dissecting macroecological and macroevolutionary patterns of forest biodiversity across the Hawaiian archipelago. – *Proc. Natl Acad. Sci. USA* 116: 16436–16441.
- Crayn, D. M., Costion, C. and Harrington, M. G. 2015. The Sahul–Sunda floristic exchange: dated molecular phylogenies document Cenozoic intercontinental dispersal dynamics. – *J. Biogeogr.* 42: 11–24.
- Davidar, P., Puyravaud, J. P. and Leigh Jr, E. G. 2005. Changes in rain forest tree diversity, dominance and rarity across a seasonality gradient in the Western Ghats, India. – *J. Biogeogr.* 32: 493–501.
- de Bruyn, M., Stelbrink, B., Morley, R. J., Hall, R., Carvalho, G. R., Cannon, C. H., Bergh, G. van den, Meijaard, E., Metcalfe, I., Boitani, L., Maiorano, L., Shoup, R. and Rintelen, T. von 2014. Borneo and Indochina are major evolutionary hotspots for Southeast Asian biodiversity. – *Syst. Biol.* 63: 879–901.
- Draper, F. C., Honorio Coronado, E. N., Roucoux, K. H., Lawson, I. T., Pitman, N. C. A., Phillips, O. L., Torres Montenegro, L. A., Valderrama Sandoval, E., Mesones, I., García-Villacorta, R., Ramirez-Arévalo, F. R. and Baker, T. R. 2018. Peatland forests are the least diverse tree communities documented in Amazonia, but contribute to high regional beta-diversity. – *Ecography* 41: 1256–1269.
- Elsen, P. R. and Tingley, M. W. 2015. Global mountain topography and the fate of montane species under climate change. – *Nat. Clim. Change* 5: 772–776.
- Exposito-Alonso, M. 2017. Rbioclim: improved getData function from the raster R package to interact with past, present and future climate data from worldclim.org. – [github.com/Moise-ExpositoAlonso/rbioclim](https://github.com/Moise-ExpositoAlonso/rbioclim).
- Farr, T. G., Rosen, P. A., Caro, E., Crippen, R., Duren, R., Hensley, S., Kobrick, M., Paller, M., Rodriguez, E., Roth, L., Seal, D., Shaffer, S., Shimada, J., Umland, J., Werner, M., Oskin, M., Burbank, D. and Alsdorf, D. 2007. The shuttle radar topography mission. – *Rev. Geophys.* 45: RG2004.
- Frodin, D. G. 2004. History and concepts of big plant genera. – *Taxon* 53: 753–776.
- Galey, M. L., Ent, A. van der, Iqbal, M. C. M. and Rajakaruna, N. 2017. Ultramafic geoecology of South and Southeast Asia. – *Bot. Stud.* 58: 18.
- Geekiyana, N., Goodale, U. M., Cao, K. and Kitajima, K. 2019. Plant ecology of tropical and subtropical karst ecosystems. – *Biotropica* 51: 626–640.
- Germain, R. M., Weir, J. T. and Gilbert, B. 2016. Species coexistence: macroevolutionary relationships and the contingency of historical interactions. – *Proc. R. Soc. B* 283: 20160047.
- Govaerts, R., Nic Lughadha, E., Black, N., Turner, R. and Paton, A. 2021. The world checklist of vascular plants, a continuously updated resource for exploring global plant diversity. – *Sci. Data* 8: 215.
- Hagen, O., Skeels, A., Onstein, R. E., Jetz, W. and Pellissier, L. 2021. Earth history events shaped the evolution of uneven biodiversity across tropical moist forests. – *Proc. Natl Acad. Sci. USA* 118: e2026347118.
- Hall, R. 2009. Southeast Asia's changing palaeogeography. – *Blumea* 54: 148–161.
- Hall, R., Audley-Charles, M. G., Banner, F. T., Hidayat, S. and Tobing, S. L. 1988. Late Palaeogene–Quaternary geology of Halmahera, eastern Indonesia: initiation of a volcanic island arc. – *J. Geol. Soc.* 145: 577–590.
- Hamilton, R., Stevenson, J., Li, B. and Bijaksana, S. 2019. A 16,000-year record of climate, vegetation and fire from Wallacean lowland tropical forests. – *Quat. Sci. Rev.* 224: 105929.
- Hamilton, R., Wolfhagen, J., Amano, N., Boivin, N., Findley, D. M., Iriarte, J., Kaplan, J. O., Stevenson, J. and Roberts, P. 2021. Non-uniform tropical forest responses to the “Columbian Exchange” in the Neotropics and Asia-Pacific. – *Nat. Ecol. Evol.* 5: 1174–1184.
- Harrison, S. and Cornell, H. 2008. Toward a better understanding of the regional causes of local community richness. – *Ecol. Lett.* 11: 969–979.
- Hartig, F. 2021. Dharma: residual diagnostics for hierarchical (multi-level / mixed) regression models. – <http://florianhartig.github.io/DHARMA/>.
- Hengl, T., Jesus, J. M. de., Heuvelink, G. B. M., Gonzalez, M. R., Kilibarda, M., Blagotić, A., Shangguan, W., Wright, M. N., Geng, X., Bauer-Marschallinger, B., Guevara, M. A., Vargas, R., MacMillan, R. A., Batjes, N. H., Leenaars, J. G. B., Ribeiro, E., Wheeler, I., Mantel, S. and Kempen, B. 2017. SoilGrids250m: global gridded soil information based on machine learning. – *PLoS One* 12: e0169748.
- Herrera-Alsina, L., Algar, A. C., Bocedi, G., Gubry-Rangin, C., Lancaster, L. T., Mynard, P., Osborne, O. G., Papadopulos, A. S. T., Creer, S., Nangoy, M., Fahri, F., Lupiyaningdyah, P., Sudiana, I. M., Juliandi, B. and Travis, J. M. J. 2021. Ancient geological dynamics impact neutral biodiversity accumulation and are detectable in phylogenetic reconstructions. – *Global Ecol. Biogeogr.* 30: 1633–1642.

- Hope, G. S. 1994. Quaternary vegetation. – In: Hill, R. S. (ed.), *History of the Australian vegetation, Cretaceous to recent*. Cambridge Univ. Press, pp. 368–389.
- Hsieh, T. C., Ma, K. H. and Chao, A. 2016. iNEXT: an R package for rarefaction and extrapolation of species diversity (Hill numbers). – *Methods Ecol. Evol.* 7: 1451–1456.
- Husson, L., Boucher, F. C., Sarr, A.-C., Sepulchre, P. and Cahyarini, S. Y. 2020. Evidence of Sundaland's subsidence requires revisiting its biogeography. – *J. Biogeogr.* 47: 843–853.
- Ibanez, T., Keppel, G., Baider, C., Birkinshaw, C., Culmsee, H., Cordell, S., Florens, F. V., Franklin, J., Giardina, C. P. and Gillespie, T. W. 2018. Regional forcing explains local species diversity and turnover on tropical islands. – *Global Ecol. Biogeogr.* 27: 474–486.
- Joyce, E. M., Thiele, K. R., Slik, F. J. W. and Crayn, D. M. 2020. Checklist of the vascular flora of the Sunda-Sahul convergence zone. – *Biodivers. Data J.* 8: e51094.
- Jucker, T., Bouriaud, O., Avacaritei, D. and Coomes, D. A. 2014. Stabilizing effects of diversity on aboveground wood production in forest ecosystems: linking patterns and processes. – *Ecol. Lett.* 17: 1560–1569.
- Karger, D. N., Weigelt, P., Amoroso, V. B., Darnaedi, D., Hidayat, A., Kreft, H. and Kessler, M. 2014. Island biogeography from regional to local scales: evidence for a spatially scaled echo pattern of fern diversity in the Southeast Asian archipelago. – *J. Biogeogr.* 41: 250–260.
- Kennedy, J. D., Marki, P. Z., Reeve, A. H., Blom, M. P. K., Prawiradilaga, D. M., Haryoko, T., Koane, B., Kamminga, P., Irestedt, M. and Jönsson, K. A. 2022. Diversification and community assembly of the world's largest tropical island. – *Global Ecol. Biogeogr.* 31: 1078–1089.
- Kooyman, R. M., Morley, R. J., Crayn, D. M., Joyce, E. M., Rossetto, M., Slik, J. W. F., Strijk, J. S., Su, T., Yap, J.-Y. S. and Wilf, P. 2019. Origins and assembly of Malesian rainforests. – *Annu. Rev. Ecol. Evol. Syst.* 50: 119–143.
- Laumonier, Y. and Nasi, R. 2018. The last natural seasonal forests of Indonesia: implications for forest management and conservation. – *Appl. Veg. Sci.* 21: 461–476.
- Lavigne, F., Degeai, J.-P., Komorowski, J.-C., Guillet, S., Robert, V., Lahitte, P., Oppenheimer, C., Stoffel, M., Vidal, C. M., Surono, P. I., Wassmer, P., Hajdas, I., Hadmoko, D. S. and Belizal, E. de. 2013. Source of the great A.D. 1257 mystery eruption unveiled, Samalas volcano, Rinjani volcanic complex, Indonesia. – *Proc. Natl Acad. Sci. USA* 110: 16742–16747.
- Lohman, D. J., Bruyn, M. de, Page, T., Rintelen, K. von, Hall, R., Ng, P. K. L., Shih, H.-T., Carvalho, G. R. and Rintelen, T. von. 2011. Biogeography of the Indo-Australian archipelago. – *Annu. Rev. Ecol. Evol. Syst.* 42: 205–226.
- MacArthur, R. H. and Wilson, E. O. 1963. An equilibrium theory of insular zoogeography. – *Evolution* 17: 373–387.
- McCullough, J. M., Oliveros, C. H., Benz, B. W., Zenil-Ferguson, R., Cracraft, J., Moyle, R. G. and Andersen, M. J. 2022. Wallacean and Melanesian islands promote higher rates of diversification within the global passerine radiation Corvidae. – *Syst. Biol.* 71: 1423–1439.
- Morley, R. J. 1981. Development and vegetation dynamics of a lowland ombrogenous peat swamp in Kalimantan Tengah, Indonesia. – *J. Biogeogr.* 8: 383–404.
- Morley, R. J. 2018a. The complex history of mountain building and the establishment of mountain biota in Southeast Asia and eastern Indonesia. – In: Hoorn, C., Perrigo, A. and Antonelli, A. (eds), *Mountains, climate and diversity*. Wiley-Blackwell, pp. 475–493.
- Morley, R. J. 2018b. Assembly and division of the South and South-East Asian flora in relation to tectonics and climate change. – *J. Trop. Ecol.* 34: 209–234.
- Nugraha, A. M. S. and Hall, R. 2018. Late Cenozoic palaeogeography of Sulawesi, Indonesia. – *Palaeogeogr. Palaeoclimatol. Palaeoecol.* 490: 191–209.
- O'Connell, K. A., Smart, U., Smith, E. N., Hamidy, A., Kurniawan, N. and Fujita, M. K. 2018. Within-island diversification underlies parachuting frog (*Rhacophorus*) species accumulation on the Sunda Shelf. – *J. Biogeogr.* 45: 929–940.
- Olson, M. E., Soriano, D., Rosell, J. A., Anfodillo, T., Donoghue, M. J., Edwards, E. J., León-Gómez, C., Dawson, T., Camarero Martínez, J. J. C., Castorena, M., Echeverría, A., Espinosa, C. I., Fajardo, A., Gazol, A., Isnard, S., Lima, R. S., Marcatti, C. R. and Méndez-Alonzo, R. 2018. Plant height and hydraulic vulnerability to drought and cold. – *Proc. Natl Acad. Sci. USA* 115: 7551–7556.
- Parmentier, I. et al. 2007. The odd man out? Might climate explain the lower tree  $\alpha$ -diversity of African rain forests relative to Amazonian rain forests? – *J. Ecol.* 95: 1058–1071.
- Rehm, E. M. and Feeley, K. J. 2015. Freezing temperatures as a limit to forest recruitment above tropical Andean treelines. – *Ecology* 96: 1856–1865.
- Ricklefs, R. E. 1987. Community diversity: relative roles of local and regional processes. – *Science* 235: 167–171.
- Ricklefs, R. E. 2004. A comprehensive framework for global patterns in biodiversity. – *Ecol. Lett.* 7: 1–15.
- Ricklefs, R. E. and He, F. 2016. Region effects influence local tree species diversity. – *Proc. Natl Acad. Sci. USA* 113: 674–679.
- Ricklefs, R. E. and Schlüter, D. 1993. Species diversity: regional and historical influences. – In: Ricklefs, R. E. and Schlüter, D. (eds), *Species diversity in ecological communities*. Univ. of Chicago Press, pp. 350–363.
- Roos, M. C., Keßler, P. J. A., Robbert Gradstein, S. R. and Baas, P. 2004. Species diversity and endemism of five major Malesian islands: diversity–area relationships. – *J. Biogeogr.* 31: 1893–1908.
- Rosenzweig, M. L. 1995. *Species diversity in space and time*. – Cambridge Univ. Press.
- Rosenzweig, M. L. and Ziv, Y. 1999. The echo pattern of species diversity: pattern and processes. – *Ecography* 22: 614–628.
- Rowe, K. C., Achmadi, A. S., Fabre, P.-H., Schenk, J. J., Steppan, S. J. and Esselstyn, J. A. 2019. Oceanic islands of Wallacea as a source for dispersal and diversification of murine rodents. – *J. Biogeogr.* 46: 2752–2768.
- Roycroft, E., Fabre, P. H., MacDonald, A. J., Moritz, C., Moussalli, A. and Rowe, K. C. 2022. New Guinea uplift opens ecological opportunity across a continent. – *Curr. Biol.* 32: 4215–4224.e3.
- Rustiami, H., Tihurua, E. F. and Trethowan, L. A. 2020. Checklist flora of Lombok. – Herbarium Bogoriense, Research Center for Biology, Indonesian Institute of Sciences.
- Sadili, A., Hidayat, A., Jakalalana, S., Kurniawan, A., Sahroni, D., Solikin and Brearley, F. Q. 2022. Forest composition and structure after 200 years of succession following the eruption of Mount Tambora (Indonesia). – *Écoscience* 29: 191–198.
- Schrader, J., König, C., Moeliono, S., Pärtel, M. and Kreft, H. 2019a. Requirements of plant species are linked to area and determine species pool and richness on small islands. – *J. Veg. Sci.* 30: 599–609.
- Schrader, J., Moeliono, S., Keppel, G. and Kreft, H. 2019b. Plants on small islands revisited: the effects of spatial scale and habitat quality on the species–area relationship. – *Ecography* 42: 1405–1414.
- Schrader, J., Wright, I. J., Kreft, H. and Westoby, M. 2021. A roadmap to plant functional island biogeography. – *Biol. Rev.* 96: 2851–2870.

- Service, N. G. D. C. D. 2023a. Global significant earthquake database. – NOAA National Centers for Environmental Information, doi:[10.7289/V5JW8BSH](https://doi.org/10.7289/V5JW8BSH).
- Service, N. G. D. C. D. 2023b. Global significant volcanic eruptions database. – NOAA National Centers for Environmental Information, doi:[10.7289/V5JW8BSH](https://doi.org/10.7289/V5JW8BSH).
- Sheil, D. and Salim, A. 2012. Diversity of locally useful tropical forest wild-plants as a function of species richness and informant culture. – *Biodivers. Conserv.* 21: 687–699.
- Sheil, D., Basuki, I., German, L., Kuyper, T. W., Limberg, G., Puri, R. K., Sellato, B., Van Noordwijk, M. and Wollenberg, E. 2012. Do anthropogenic dark earths occur in the interior of Borneo? Some initial observations from East Kalimantan. – *Forests* 3: 207–229.
- Sin, Y. C. K., Kristensen, N. P., Gwee, C. Y., Chisholm, R. A. and Rheindt, F. E. 2022. Bird diversity on shelf islands does not benefit from recent land-bridge connections. – *J. Biogeogr.* 49: 189–200.
- Skeels, A., Boschman, L. M., McFadden, I. R., Joyce, E. M., Hagen, O., Jiménez Robles, O., Bach, W., Boussange, V., Kegg, T., Jetz, W. and Pellissier, L. 2023. Paleoenvironments shaped the exchange of terrestrial vertebrates across Wallace's line. – *Science* 381: 86–92.
- Slik, J. W. F., Raes, N., Aiba, S.-I., Brearley, F. Q., Cannon, C. H., Meijaard, E., Nagamasu, H., Nilus, R., Paoli, G., Poulsen, A. D., Sheil, D., Suzuki, E., Van Valkenburg, J. L. C. H., Webb, C. O., Wilkie, P. and Wulffraat, S. 2009. Environmental correlates for tropical tree diversity and distribution patterns in Borneo. – *Divers. Distrib.* 15: 523–532.
- Spasojevic, M. J., Catano, C. P., LaManna, J. A. and Myers, J. A. 2018. Integrating species traits into species pools. – *Ecology* 99: 1265–1276.
- Struebig, M. J. et al. 2022. Safeguarding imperiled biodiversity and evolutionary processes in the Wallacea center of endemism. – *BioScience* 72: 1118–1130.
- Sullivan, M. J. P. et al. 2017. Diversity and carbon storage across the tropical forest biome. – *Sci. Rep.* 7: 39102.
- Swenson, N. G., Zambrano, J., Howe, R. and Wolf, A. 2023. Biogeographic context is related to local scale tree demography, co-occurrence and functional differentiation. – *Ecol. Lett.* 26: 1212–1222.
- ter Steege, H. et al. 2023. Mapping density, diversity and species-richness of the Amazon tree flora. – *Commun. Biol.* 6: 1130.
- Toon, A., Drew, A., Mason, I. J., Hughes, J. M. and Joseph, L. 2017. Relationships of the New Guinean subspecies, *Gymnorrhina tibicen papuana*, of the Australian magpie: an assessment from DNA sequence data. – *Emu* 117: 305–315.
- Toussaint, E. F. A., Hall, R., Monaghan, M. T., Sagata, K., Ibalim, S., Shaverdo, H. V., Vogler, A. P., Pons, J. and Balke, M. 2014. The towering orogeny of New Guinea as a trigger for arthropod megadiversity. – *Nat. Commun.* 5: 4001.
- Trethowan, L. A., Eiserhardt, W. L., Girmansyah, D., Kintamani, E., Utteridge, T. M. A. and Brearley, F. Q. 2020. Floristics of forests across low nutrient soils in Sulawesi, Indonesia. – *Biotropica* 52: 1309–1318.
- Trethowan, L. A., Arvidsson, C. and Bramley, G. L. C. 2022. Environmental stress influences Malesian Lamiaceae distributions. – *Ecol. Evol.* 12: e9467.
- Trethowan, L. A., Jennings, L., Bramley, G., Clark, R., Dawson, S., Moore, A., Pearce, L., Puglisi, C., Riwu-Kaho, M., Rosaria, T.-B., Trias-Blasi, A., Utteridge, T. M. A. and Rustiarni, H. 2023a. Environment-dependent influence of fruit size upon the distribution of the Malesian archipelagic flora. – *Plants People Planet* 5: 712–721.
- Trethowan, L. A., Walker, B. E., Bachman, S. P., Heatubun, C., Puradyatmika, P., Rustiarni, H. and Utteridge, T. M. A. 2023b. Plant species biogeographic origin shapes their current and future distribution on the world's highest island mountain. – *J. Ecol.* 111: 372–379.
- Trethowan, L. A. et al. 2024. Data from: From earthquakes to island area: multi-scale effects upon local diversity. – Zenodo Digital Repository, <https://zenodo.org/doi/10.5281/zenodo.7989963>.
- Ufford, A. Q. van and Cloos, M. 2005. Cenozoic tectonics New Guinea. – *Am. Assoc. Petr. Geol.* 89: 119–140.
- van der Plas, F. et al. 2018. Continental mapping of forest ecosystem functions reveals a high but unrealised potential for forest multifunctionality. – *Ecol. Lett.* 21: 31–42.
- van Steenis, C. 1950. On the hierarchy of environmental factors in plant ecology. – *Proc. 7th Int. Bot. Congr.*, pp. 637–644.
- Voris, H. K. 2000. Maps of Pleistocene sea levels in southeast Asia: shorelines, river systems and time durations. – *J. Biogeogr.* 27: 1153–1167.
- Walker, B. E. 2021. Kewr: an R package to access data from RBG Kew's APIs. – <https://barnabywalker.github.io/kewr/>.
- Whelley, P. L., Newhall, C. G. and Bradley, K. E. 2015. The frequency of explosive volcanic eruptions in Southeast Asia. – *Bull. Volcanol.* 77: 1.
- Whitman, M., Beaman, R. S., Repin, R., Kitayama, K., Aiba, S.-I. and Russo, S. E. 2021. Edaphic specialization and vegetation zones define elevational range-sizes for Mt Kinabalu regional flora. – *Ecography* 44: 1698–1709.
- Whitmore, T. C. 1984. A vegetation map of Malesia at scale 1:5 million. – *J. Biogeogr.* 11: 461–471.
- Wilf, P., Zou, X., Donovan, M. P., Kocsis, L., Briguglio, A., Shaw, D., Slik, J. F. and Lambiase, J. J. 2022. First fossil-leaf floras from Brunei Darussalam show Dipterocarp dominance in Borneo by the Pliocene. – *PeerJ* 10: e12949.
- Willis, K. J. and Whittaker, R. J. 2002. Species diversity-scale matters. – *Science* 295: 1245–1248.
- Wright, I. J., Dong, N., Maire, V., Prentice, I. C., Westoby, M., Díaz, S., Gallagher, R. V., Jacobs, B. F., Kooyman, R., Law, E. A., Leishman, M. R., Niinemets, Ü., Reich, P. B., Sack, L., Villar, R., Wang, H. and Wilf, P. 2017. Global climatic drivers of leaf size. – *Science* 357: 917–921.
- Wurster, C. M., Rifai, H., Zhou, B., Haig, J. and Bird, M. I. 2019. Savanna in equatorial Borneo during the Late Pleistocene. – *Sci. Rep.* 9: 6392.
- Xie, S., Valente, L. and Etienne, R. S. 2023. Can we ignore trait-dependent colonization and diversification in island biogeography? – *Evolution* 77: 670–681.
- Yap, J.-Y. S., Rossetto, M., Costion, C., Crayn, D., Kooyman, R. M., Richardson, J. and Henry, R. 2018. Filters of floristic exchange: how traits and climate shape the rain forest invasion of Sahul from Sunda. – *J. Biogeogr.* 45: 838–847.
- Zobel, M. 1997. The relative role of species pools in determining plant species richness: an alternative explanation of species coexistence? – *Trends Ecol. Evol.* 12: 266–269.