


Please cite the Published Version

Marriott, Amy E, Furlong Silva, Julio, Pionnier, Nicolas , Sjoberg, Hanna, Archer, John, Steven, Andrew, Kempf, Dale, Taylor, Mark J and Turner, Joseph D (2022) A mouse infection model and long-term lymphatic endothelium co-culture system to evaluate drugs against adult *Brugia malayi*. PLoS Neglected Tropical Diseases, 16 (6). e0010474. ISSN 1935-2727

DOI: <https://doi.org/10.1371/journal.pntd.0010474>

Publisher: Public Library of Science

Version: Published Version

Downloaded from: <https://e-space.mmu.ac.uk/629938/>

Usage rights:  [Creative Commons: Attribution 4.0](https://creativecommons.org/licenses/by/4.0/)

Additional Information: This is an Open Access article which appeared in PLoS Neglected Tropical Diseases, published by Public Library of Science.

Enquiries:

If you have questions about this document, contact openresearch@mmu.ac.uk. Please include the URL of the record in e-space. If you believe that your, or a third party's rights have been compromised through this document please see our Take Down policy (available from <https://www.mmu.ac.uk/library/using-the-library/policies-and-guidelines>)

RESEARCH ARTICLE

A mouse infection model and long-term lymphatic endothelium co-culture system to evaluate drugs against adult *Brugia malayi*

Amy E. Marriott¹, Julio Furlong Silva¹, Nicolas Pionnier¹, Hanna Sjoberg¹, John Archer¹, Andrew Steven¹, Dale Kempf², Mark J. Taylor¹, Joseph D. Turner^{1*}

1 Centre for Drugs and Diagnostics & Centre for Neglected Tropical Diseases, Department of Tropical Disease Biology, Liverpool School of Tropical Medicine, Pembroke Place, Liverpool, United Kingdom,

2 Pharmaceutical R&D, AbbVie, North Chicago, Illinois, United States of America

* Joseph.Turner@lstm.ac.uk



Abstract

The development of new drugs targeting adult-stage lymphatic filarial nematodes is hindered by the lack of a robust long-term *in vitro* culture model. Testing potential direct-acting and anti-*Wolbachia* therapeutic candidates against adult lymphatic filariae *in vitro* requires their propagation via chronic infection of gerbils. We evaluated *Brugia malayi* parasite burden data from male Mongolian gerbils compared with two immune-deficient mouse strains highly susceptible to *B. malayi*: CB.17 Severe-Combined Immuno-Deficient (SCID) and interleukin-4 receptor alpha, interleukin-5 double knockout (IL-4Rα^{-/-}IL-5^{-/-}) mice. Adult worms generated in IL-4Rα^{-/-}IL-5^{-/-} mice were tested with different feeder cells (human embryonic kidney cells, human adult dermal lymphatic endothelial cells and human THP-1 monocyte differentiated macrophages) and comparative cell-free conditions to optimise and validate a long-term *in vitro* culture system. Cultured parasites were compared against those isolated from mice using motility scoring, metabolic viability assay (MTT), *ex vivo* microfilariae release assay and *Wolbachia* content by qPCR. A selected culture system was validated as a drug screen using reference anti-*Wolbachia* (doxycycline, ABBV-4083 / flubentylisin) or direct-acting compounds (flubendazole, suramin). BALB/c IL-4Rα^{-/-}IL-5^{-/-} or CB.17 SCID mice were superior to Mongolian gerbils in generating adult worms and supporting *in vivo* persistence for periods of up to 52 weeks. Adult females retrieved from BALB/c IL-4Rα^{-/-}IL-5^{-/-} mice could be cultured for up to 21 days in the presence of a lymphatic endothelial cell co-culture system with comparable motility, metabolic activity and *Wolbachia* titres to those maintained *in vivo*. Drug studies confirmed significant *Wolbachia* depletions or direct macrofilaricidal activities could be discerned when female *B. malayi* were cultured for 14 days. We therefore demonstrate a novel methodology to generate adult *B. malayi* *in vivo* and accurately evaluate drug efficacy *ex vivo* which may be adopted for drug screening with the dual benefit of reducing overall animal use and improving anti-filarial drug development.

OPEN ACCESS

Citation: Marriott AE, Furlong Silva J, Pionnier N, Sjoberg H, Archer J, Steven A, et al. (2022) A mouse infection model and long-term lymphatic endothelium co-culture system to evaluate drugs against adult *Brugia malayi*. PLoS Negl Trop Dis 16(6): e0010474. <https://doi.org/10.1371/journal.pntd.0010474>

Editor: Benjamin L. Makepeace, University of Liverpool, UNITED KINGDOM

Received: February 1, 2022

Accepted: May 7, 2022

Published: June 7, 2022

Copyright: © 2022 Marriott et al. This is an open access article distributed under the terms of the [Creative Commons Attribution License](https://creativecommons.org/licenses/by/4.0/), which permits unrestricted use, distribution, and reproduction in any medium, provided the original author and source are credited.

Data Availability Statement: All relevant data are within the manuscript and its Supporting Information files.

Funding: This work was funded by a National Centre for Replacement, Refinement and Reduction of Animals in Research Studentship (NC3R Studentship NC/M00175X/1) to J.D.T., M.J.T. & A.E.M. and a Bill and Melinda Gates Foundation award to the Liverpool School of Tropical Medicine (BMGF OPP1054324). The

fundors had no role in study design, data collection and analysis, decision to publish, or preparation of the manuscript.

Competing interests: The authors have declared that no competing interests exist.

Author summary

Lymphatic filariasis (LF), the cause of elephantiasis, and onchocerciasis, the cause of river blindness, are Neglected Tropical Diseases (NTDs) prioritised for elimination as a public health problem. New drugs which cure filarial infection are required to accelerate elimination of these diseases. There is a lack of drug screening systems to accurately assess treatment efficacy of new candidate drugs, particularly for LF. Here we describe new methods to grow large yields of the causative agent of lymphatic filariasis, *Brugia malayi*, in selective immune-deficient mice and maintain female parasites outside of the body, in combination with a bi-layer of lymphatic endothelial cells, for periods of up to 3 weeks without loss of viability. We demonstrate the application of this system to test the efficacy of reference and experimental drug compounds including drugs targeting the filarial symbiotic bacterium, *Wolbachia*. The novel production and maintenance of female *B. malayi* described here will have useful future applications to more accurately determine candidates for onward clinical testing as new filariasis cures whilst reducing animal use, costs, and drug development time-frames.

Introduction

Lymphatic filariasis (LF), caused by the vector-borne parasitic nematodes *Wuchereria bancrofti*, *Brugia malayi* and *Brugia timori*, presents a significant global health burden with an estimated 51 million people currently infected in tropical regions of the world [1].

Clinically, LF manifests as elephantiasis and hydrocele in approximately 40 million individuals, making it a leading cause of global disability [2]. Lymphatic filariasis is prioritised for elimination as a public health problem by 2030. The current elimination strategy relies on annual mass drug administration (MDA) of albendazole alone, or in combination with either or both ivermectin and diethylcarbamazine, which target the transmissible stage of the disease, the microfilariae (mf). In Africa, in regions of overlapping onchocerciasis and/or loiasis endemicity, delivery of albendazole- and ivermectin-based MDA drug regimens for up to 6 years with high population coverage is required to block transmission of infection. Currently, MDA is still needed in 49 countries, with 13 countries having not fully scaled up their elimination programmes, and five countries yet to commence MDA [3].

Development of a safe and effective short-course curative (macrofilaricidal) drug or, alternatively, a drug which permanently sterilises female adult lymphatic filariae, would be an important new tool to dock the long-tail of filariasis elimination, particularly in transmission ‘hot-spots’ and hard-to-reach areas currently without MDA delivery, or where existing strategies are failing [4].

Novel macrofilaricidal drug candidates, targeting nematode molecules or the intracellular filarial symbiont, *Wolbachia*, are identified by screening chemical compound libraries using a variety of *in vitro* assays. Screening drug activity against adult stage lymphatic filariae in particular is hampered due to low throughput and short life-span *in vitro* which jeopardises accurate evaluations of drug efficacy in culture due to decline in viability. To increase throughput and extend culture periods, anti-filarial or anti-*Wolbachia* *in vitro* drug screens which utilise more accessible and/or abundant life cycle stages; namely the mf [5, 6] or infectious L3 stage [7] and other, surrogate, non-LF filarial parasites such as *Litomosoides sigmodontis* [8], *L. loa* [9], *Mansonella perstans* [10] or *Onchocerca* spp. [11, 12] have been validated and implemented. Whilst useful for initial screening, a caveat to these systems is that anti-filarial or anti-*Wolbachia* activities may not translate to the target adult stages of lymphatic filariae due to variation in stage-

or species-specific expression of nematode drug targets or relative yields and cell division rates of *Wolbachia* symbionts.

A further impediment to macrofilaricidal drug discovery is that there is no established system of maintaining filarial life cycles outside of an animal host. Whilst there is no suitable permissive rodent model of *Wuchereria bancrofti* or *Onchocerca volvulus*, the Mongolian Gerbil, *Meriones unguiculatus*, is the standard laboratory model of *Brugia malayi* infection, and the closely related animal filariae, *Brugia pahangi* [13, 14]. Since the 1970s, Gerbils have been utilised to provide all life cycle stages for *Brugia* spp. for drug screening *in vitro* as well as onward therapeutic evaluations *in vivo*. Productivity in terms of numbers of adults and mf produced is highly variable, declines with age of infection and is generally low yielding, especially for *B. malayi*. More recently, Severe-Combined ImmunoDeficient (SCID) mice, deficient in adaptive immunity, have been appraised as long-term fully susceptible hosts for *B. malayi* and the human filarial pathogen, *Loa loa*, and have been subsequently validated as drug screening models [15–17]. *Brugia malayi* infection success and variability in adult yields are more consistent in SCID mice compared with gerbils [18]. We have recently identified that adaptive immune control of *B. malayi* in mice is dependent on interleukin (IL)-4 receptor- α ($R\alpha$) macrophage activation mediating recruitment of a vigorous tissue eosinophilia [19]. By ablating gene function of IL-4 $R\alpha$ and the eosinophil growth factor, IL-5, full development of *B. malayi* in mice is also possible [20].

Here, we compare two immuno-deficient mouse strains; CB.17 SCID and BALB/c IL-4 $R\alpha^{-/-}$ IL-5 $^{-/-}$, for long-term adult *B. malayi* parasite generation in comparison to the standard *M. unguiculatus* gerbil model. We utilised adult male and female *B. malayi* generated in the best performing rodent line to optimise a mammalian cell co-culture system for long-term maintenance over a time-course of 4 weeks. A primary human lymphatic endothelial cell co-culture with adult female *B. malayi* was selected and initially validated as a drug screening system against macrofilaricidal and *Wolbachia* depleting drugs.

Materials and methods

Ethics statement

All animal experiments were approved by the ethical committees of the University of Liverpool and Liverpool School of Tropical Medicine (LSTM) and conducted under Home Office Animals (Scientific Procedures) Act 1986 (UK) requirements. Animals had free access to food and water throughout the duration of studies, checked daily for welfare and weighed weekly.

Animals

BALB/c IL-4 $R\alpha^{-/-}$ IL-5 $^{-/-}$ mice were generated by crossing IL-4 $R\alpha^{-/-}$ and IL-5 $^{-/-}$ mice (Jackson Laboratories). Male CB.17 SCID mice were purchased from Charles River, UK. *Meriones unguiculatus* (Mongolian gerbils; jirds) breeding pairs were originally purchased from Charles River, Europe. Animal stocks were maintained under specific pathogen-free (SPF) conditions at the biomedical services unit (BSU), University of Liverpool, Liverpool, UK. Male BALB/c IL-4 $R\alpha^{-/-}$ IL-5 $^{-/-}$ and CB.17 SCID mice were 6–8 weeks old and weighed 18–24 g at start of experiments. Male gerbils were 4–6 months old and weighed 80–100 g at start of experiments.

Brugia malayi parasite maintenance

The life cycle of *B. malayi* (*Bm*) was maintained in *Aedes aegypti* mosquitoes and Mongolian gerbils. For *Bm* larvae (*Bm*L3), microfilariae (mf) were collected from gerbils via catheterisation. Gerbils were anaesthetised with isoflurane and subjected to peritoneal washes with RPMI

1640 medium (ThermoFisher Scientific) to harvest mf. Microfilariae were then purified using PD10 size exclusion columns (Amersham), enumerated by microscopy and mixed with human blood to a final concentration of 20,000 mf/ml. Microfilariae were fed to female *A. aegypti* mosquitoes through an artificial membrane feeder heated to 37°C (Hemotek). Blood fed mosquitoes were reared for 14 days with daily sugar-water feeding to allow development to *BmL3* stage. At day 14, *BmL3* were collected from infected mosquitoes by stunning at 4°C, then crushed and concentrated using a Baermann's apparatus and RPMI medium.

***B. malayi* experimental infections**

For *BmL3* infection, male Mongolian gerbils, aged 4–6 months, were injected via the intraperitoneal route, with 400 highly motile *BmL3*. Alternatively, male IL-4R $\alpha^{-/-}$ IL-5 $^{-/-}$ mice or male CB.17 SCID mice, both aged 6–8 weeks, were injected with 150 *BmL3*. Animals were left for periods between 12- and 52-weeks post-infection to allow infections to proceed to the chronic adult stage.

Adult *B. malayi* implantation surgeries

Brugia malayi adults were collected from infected donor CB.17 SCID mice via peritoneal lavage post-mortem. Parasites were then separated into male and female, washed with pre-heated, sterile RPMI (Sigma) and collected into groups of 10 female parasites for implantation (total n = 6–8). CB.17 SCID mice were then placed under surgical anaesthesia using isoflurane and received a subcutaneous injection of buprenorphine prior to implantation of female parasites into the peritoneal cavity. Implantation was achieved by making a small incision into the skin and abdominal cavity in the upper right quadrant and inserting parasites into the lower abdominal quadrant using a glass pipette to ensure all parasites were maintained in the cavity. The incisions were then re-sutured after implant and animals were re-housed as before and monitored closely.

***In vitro* culture of *Brugia malayi* adults**

For parasite cultivation, adult *B. malayi* were isolated from the peritoneal cavities of BALB/c IL-4R $\alpha^{-/-}$ / IL-5 $^{-/-}$ mice via peritoneal lavage post-mortem. Parasites were washed with pre-warmed, sterile RPMI and separated into males and females, with worms of the highest motility and similar lengths selected for culture.

Initial culture studies evaluated the survival of female and male *B. malayi* on different endothelial cell monolayers; lymphatic human microvascular endothelial cells derived from human dermis (HMVECdy; LEC; Lonza), human embryonic kidney cells (HEK293; European Collection of Authenticated Cell Cultures; ECACC), and their recommended cellular media; endothelial basal medium plus supplements (EGM-2 MV; Lonza), and Dulbecco's Modified Eagle Medium (DMEM; Sigma) for LECs and HEKs, respectively, to function as relative cell-free controls conditions in order to determine optimum culture conditions and longevity of culture systems. Individual cell lines were plated and allowed to form confluent monolayers in 6-well plates (Corning). At this point, parasites were added at a density of 2 adults per well with the addition of 6 ml of corresponding cell media containing 10% FBS, 2% penicillin-streptomycin and 2% amphotericin B. All cultured parasites were compared against parasites of the same age, freshly isolated from mice, to ensure cultured parasites were compared against an appropriate *in vivo* control. Culture media was replenished every 3 days and cells were replenished every week. Parasite motility was analysed every day using a 4-scale scoring system devised by Rao and Weil [21]. Parasites, both *in vitro* and *in vivo*, were taken for viability (MTT) and *Wolbachia* load analysis (qPCR) at the time points indicated in the corresponding results section.

THP-1 macrophage co-culture

To determine whether addition of macrophages to the culture system enhanced parasite survival further, a monocyte-derived cell line, THP-1 (ECACC), originally derived from an acute monocytic leukaemia patient were evaluated. To differentiate THP1 cells into macrophages (M ϕ), cells were treated with 10 ng/ml of 12-O-tetradecanoylphorbol-13-acetate (PMA; Peprotech), as previously described [22]. For polarisation into either a classically- or alternatively-activated phenotype, cells were treated with 50ng/ml recombinant interferon-gamma, (IFN- γ), or 25 ng/ml of recombinant interleukin 4 (IL-4) and interleukin 13 (IL-13), respectively (Peprotech), as previously detailed [23]. Forty-eight hours post-stimulation, M ϕ (IFN- γ), M ϕ (IL-4/IL-13), or non-polarised M ϕ (naïve) cells were washed 3 times in fresh medium and 0.4 μ m pore-size transwell inserts (Corning) were added to fresh monolayers of LECs in a 6-well plate. Six millilitres of EGM-2 MV medium was then added, ready for the addition of parasites, as detailed above. Lymphatic endothelial cell monolayers with additional LEC transwell inserts were included as controls.

3-(4, 5-dimethylthiazol-2-yl)-2,5-diphenyl tetrazolium bromide (MTT) viability assessments

To assess parasite viability quantitatively, parasites were removed from culture and washed in pre-warmed phosphate buffered saline (PBS; Gibco). Individual parasites were then transferred into separate wells of a 96-well plate and incubated with 0.5 mg/ml MTT (Sigma) for 2 hours at 37°C. Following incubation, parasites were washed in PBS, and incubated for 1 hour with 100% Dimethyl Sulfoxide (DMSO; Sigma) to solubilise the blue formazan product. The plate was then analysed using a fluorescent plate reader set at 450nm, including a primary shake step. Data were expressed as a percentage change in optical density readings from the *in vivo* control median.

qPCR for *Wolbachia* quantification

DNA extractions were performed on individual parasites using a Qiagen QIAmp DNA mini kit in accordance with the manufacturer's instructions. Quantification of *Bm* wsp copy numbers was performed using qPCR as previously described [15].

Anti-*Wolbachia* drug screen validation

To assess the *in vitro* culture system's ability to evaluate anti-*Wolbachia* drug activity, a drug challenge was carried out using the 'gold-standard' reference drug, doxycycline (DOX; Sigma Aldrich). Flubentylosin (ABBV-4083, also referred to as 'tylosin A microfilaricide'; 'TylAMac' [24, 25]), a novel oral tylosin macrolide derivative compound proven to have superior *in vitro* and *in vivo* anti-*Wolbachia* activities compared with DOX, was synthesised as described [25] and assessed in comparison to DOX. Doxycycline was solubilised in ddH₂O and prepared to a concentration of 5 μ M in EGM-2 MV medium, whilst the same concentration of flubentylosin was solubilised in 100% DMSO and diluted in EGM-2 MV medium, equating to a final percentage of 0.05% DMSO per well. Drugs were replenished at each medium change. An equivalent percentage of DMSO used in the drug groups was added to vehicle control groups. Parasites were scored daily for motility and survival, with treatment end points at 7 and 14 days. An additional wash-out group, which entailed drug treatment for 7 days followed by a 7-day washout period was included in the study to evaluate any *Wolbachia* recrudescence. Quantitative PCR analysis, as previous, was employed at endpoints to evaluate *Wolbachia* reductions in response to treatment.

Direct-acting macrofilaricide drug screen validation

To evaluate the system's functionality in determining direct acting macrofilaricide activity, Flubendazole (FBZ) and Suramin (SUR) (both Merck) were used as reference drugs. Compounds were prepared at 10 μ M in DMSO. The equivalent DMSO concentration was added to control wells. Parasites were maintained for 14 days in culture with daily motility scoring and an end-point MTT readout.

Statistics

Data were tested for normal distribution using D'Agostino & Pearson omnibus normality tests. Data that passed normality tests were analyzed by one-way ANOVA with Tukey's multiple comparisons tests. Data significantly different from a normal distribution were analyzed using Kruskal-Wallis with Dunn's multiple comparisons tests. Significance was defined at $\alpha < 0.05$ and analyzed using GraphPad Prism v7.0h. Survival curves were compared using Mantel-Cox log-rank tests.

Results

Severe-combined and IL-4 $\alpha^{-/-}$ IL-5 $^{-/-}$ immunodeficient mice are superior animal models for the production and long-term maintenance of adult *B. malayi* compared with *M. unguiculatus*.

Parasitological data from gerbil, CB.17 SCID and BALB/c IL-4 $\alpha^{-/-}$ IL-5 $^{-/-}$ mouse *B. malayi* intra-peritoneal infections were collated from 32 independent experiments (Fig 1 and Table 1). Length of experimental infections ranged between 12–52 weeks post-infection. Active infection was observed in 80.8% of gerbils ($n = 105$), 95.5% of CB.17 SCID mice ($n = 88$), and 95.9% of BALB/c IL-4 $\alpha^{-/-}$ IL-5 $^{-/-}$ mice ($n = 72$). The percentage of infections producing males was 65.4% in gerbils, 92.1% in CB.17 SCID and 87.5% in BALB/c IL-4 $\alpha^{-/-}$ IL-5 $^{-/-}$ mice. The sex ratio of infection was skewed towards females across all three groups, with a 1:0.65 ratio in gerbils, 1:0.34 in CB.17 SCID mice and 1:0.35 in BALB/c IL-4 $\alpha^{-/-}$ IL-5 $^{-/-}$ mice (Table 1). Adult worm recoveries were expressed as a percentage of the initial *BmL3* inoculation, to normalise for variable inoculations of *BmL3* between experiments. Both CB.17 SCID and BALB/c IL-4 $\alpha^{-/-}$ IL-5 $^{-/-}$ mice yielded significant, 3-fold higher adult worm burdens compared with yields recovered from gerbils (gerbil median recovery of inoculate = 4%, CB.17 SCID = 13%, BALB/c IL-4 $\alpha^{-/-}$ IL-5 $^{-/-}$ = 12% ($P < 0.0001$ Kruskal-Wallis with Dunn's post-hoc test, Fig 1A). Yields of female *B. malayi* in CB.17 SCID and BALB/c IL-4 $\alpha^{-/-}$ IL-5 $^{-/-}$ mice were 4–5-fold higher compared with gerbils; gerbil median recovery of inoculate = 2% (median of absolute numbers of female parasites recovered = 4, range = 0–85), CB.17 SCID = 9% (median of absolute numbers of female parasites recovered = 8, range = 0–22); BALB/c IL-4 $\alpha^{-/-}$ IL-5 $^{-/-}$ = 10% (median of absolute numbers of female parasites recovered = 10, range = 0–73) ($P < 0.0001$ Kruskal-Wallis with Dunn's post-hoc test, Fig 1B). Male *B. malayi* yields were 2- and 1.3-fold significantly higher in CB.17 SCID (median = 3%, median of absolute numbers of male parasites recovered = 2, range = 0–14) and BALB/c IL-4 $\alpha^{-/-}$ IL-5 $^{-/-}$ mice (median = 2.3%, median of absolute numbers of male parasites recovered = 3, range = 0–20), respectively, in comparison to gerbils (median = 1.5%, median of absolute numbers of male parasites recovered = 7, range = 0–105) ($P < 0.001$ Kruskal-Wallis with Dunn's post-hoc test, Fig 1C).

B. malayi mf production in the peritoneum was normalised to number of female *B. malayi* worms recovered per animal, to allow for accurate comparisons. Significantly higher mf productions were observed in gerbils, which were 5-fold and 20-fold higher than those of CB.17 SCID or BALB/c IL-4 $\alpha^{-/-}$ IL-5 $^{-/-}$ mice; gerbil median = 7.4×10^4 mf/female (median absolute

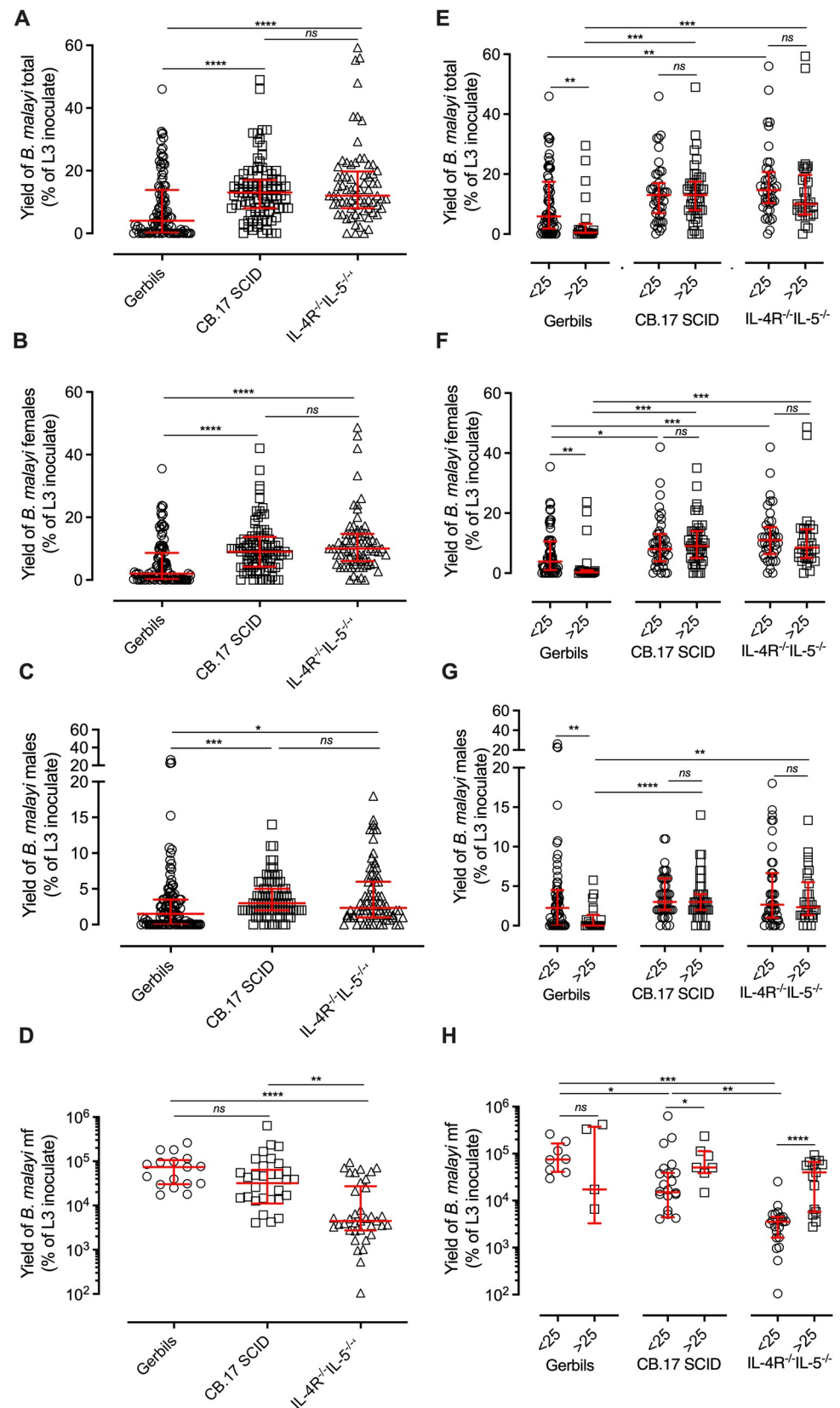


Fig 1. Meta-analysis of filarial adult parasitological yields in gerbils, CB.17 SCID or BALB/c IL-4R α ^{-/-}IL-5^{-/-} mice. (A) Total, (B) female or (C) male *B. malayi* recovered from the peritonea of gerbils, CB.17 SCID or BALB/c IL-4R α ^{-/-}IL-5^{-/-} mice. Data are number of worms as a % of initial larval inoculation. (D) Total peritoneal mf yields recovered from gerbils, CB.17 SCID or BALB/c IL-4R α ^{-/-}IL-5^{-/-} mice adjusted per female *B. malayi* recovered. (E-H) data stratified into infections of <25 & >25 weeks. Each point represents an individual animal, red horizontal lines represent median and inter-quartile range values. Significance is indicated as ****P<0.0001, ***P<0.001, **P<0.01, *P<0.05 (Kruskal-Wallis with Dunn's multiple comparison's tests comparing between rodent models or Mann-whitney tests comparing between time points).

<https://doi.org/10.1371/journal.pntd.0010474.g001>

mf yields /animal = 856,666, range = 0–5,250,000) vs = 1.5×10^4 mf/female (median absolute mf yields /animal = 238,700, range = 0–938,925), or 3.5×10^3 mf/female, (median absolute mf yields /animal = 61,000, range = 0–520,000), CB.17 SCID or BALB/c IL-4R α ^{-/-}IL-5^{-/-} respectively, P<0.0001, Kruskal-Wallis with Dunn's post-hoc test, Fig 1D). Despite varying mf recoveries across species and strain, all mf displayed a normal, fully motile phenotype post-mortem, indicating no differences in health.

Parasitological data was stratified into different age-of-infection time-points (12–25 weeks and >25 weeks) to scrutinise whether differences between yields in gerbils and immunodeficient mice varied with chronicity of patent infection (Fig 1E–1H). At periods between 12–25 weeks post-infection, the total percentage of *B. malayi* adults recovered from both immunodeficient mouse strains were significantly (>2-fold) higher than those recovered from gerbils ((CB.17 SCID median = 13% (median of absolute number of parasites recovered = 9, range = 0–29), BALB/c IL-4R α ^{-/-}IL-5^{-/-} median = 13% (median of absolute number of parasites recovered = 12, range = 0–32) vs gerbil median = 5.9% (median of absolute number of parasites recovered = 21, range = 0–130), P<0.002 Kruskal-Wallis with Dunn's post-hoc test, Fig 1E)). Female yields were significantly higher in both immunodeficient mouse strains compared with gerbils ((CB.17 SCID median = 8% (median of absolute number of females recovered = 6, range = 0–22), BALB/c IL-4R α ^{-/-}IL-5^{-/-} median = 11% (median of absolute number of females recovered = 9, range = 0–26) vs gerbils median = 3.9% (median of absolute number of females recovered = 6, range = 0–84), P<0.0001 Kruskal-Wallis with Dunn's post-hoc test Fig 1F)), whereas there were no significant differences in male recoveries (BALB/c IL-4R α ^{-/-}IL-5^{-/-} median of absolute number of males recovered = 2, range = 0–11, CB.17 median of absolute number of males recovered = 2, range = 0–11, gerbil median of absolute number of males recovered = 21, range = 0–130, equating to median percentage recoveries of 15%, 13% and 6%, respectively) (Fig 1G)). In infections >25 weeks, the percentage of *B. malayi* adults recovered were significantly increased (20-fold) in both mouse strains compared to gerbils ((CB.17 SCID median = 13%; median of absolute numbers of parasites recovered = 13, range = 0–49) BALB/c IL-4R α ^{-/-}IL-5^{-/-} median = 10% (median of absolute number of parasites recovered = 14.5, range = 0–89) vs gerbils median = 0.5% (median of absolute number of

Table 1. Summary of *B. malayi* adult parasitology in gerbils, CB.17 SCID mice and BALB/c IL-4R α ^{-/-}IL-5^{-/-} mice.

Strain	% active infection (n)	Median % adult recovery of L3 inoculate (range, n)	% infections producing males (n)	Average ratio F:M
Gerbil	80.8 (105)	4% (0–32.5, 105)	65.4 (105)	1:0.65
CB.17 SCID	95.5 (88)	13% (0–49, 88)	92.1 (88)	1:0.35
IL4R α ^{-/-} IL-5 ^{-/-}	95.9 (72)	12% (0–59.3, 72)	87.5 (72)	1:0.34

Adult parasitology summary between rodent strains and species detailing: 1. the percentage of active infections as a function of the total number of animals of that species/strain infected (the percentage of animals with parasites retrieved at necropsy), 2. the median percentage of adults recovered (males and females) as a function of the initial L3 inoculate, 3. the percentage of total infections producing males as opposed to female only infections, and the average ratio of females to males across infections.

<https://doi.org/10.1371/journal.pntd.0010474.t001>

parasites recovered = 13.5, range = 0–118), $P < 0.0001$ Kruskal-Wallis with Dunn's post-hoc test (Fig 1E)). The number of females yielded were 28-fold lower in gerbils than from the two mouse strains ((CB.17 SCID median = 9%, median of absolute number of female parasites recovered = 9, range = 0–35) and BALB/c IL-4R $\alpha^{-/-}$ /IL-5 $^{-/-}$ median = 8.5% (median of absolute number of females parasites recovered = 11.5, range = 0–73) vs gerbils median = 0.3% (median absolute number of female parasites recovered = 6, range = 0–95) $P < 0.0001$ Kruskal-Wallis with Dunn's post-hoc test, Fig 1F)). Male yields were also significantly lower (3-fold) in gerbils than both mouse strains ((CB.17 SCID median = 3% (median absolute number of males recovered = 3, range = 0–14), BALB/c IL-4R $\alpha^{-/-}$ /IL-5 $^{-/-}$ median = 2.3% (median absolute number of males recovered = 3, range = 0–14) vs gerbils median = 0.1% (median absolute number of males recovered = 7, range = 0–40), $P < 0.0001$ Kruskal-Wallis with Dunn's post-hoc test Fig 1G)). In comparison, mf production in 12–25 week infected gerbils were 5- and 16-fold higher compared to CB.17 SCID and BALB/c IL-4R $\alpha^{-/-}$ /IL-5 $^{-/-}$ mice vs CB.17 SCID mice, ((gerbil median = 7.4×10^4 mf/female (median absolute mf yield/animal = 983,817, range = 230,303–525,000), CB.17 SCID = 1.5×10^4 mf/female (median absolute mf yield/animal = 155,295, range = 0–872,000), and BALB/c IL-4R $\alpha^{-/-}$ /IL-5 $^{-/-}$ = 4.5×10^3 mf/female (median absolute mf yield/animal = 35,637.5, range = 0–228,228) $P < 0.0001$ Kruskal-Wallis with Dunn's post-hoc test Fig 1H)). In older, >25-week infections, no significant differences in mf production per female worm were apparent between the different models (gerbil median absolute mf yield/animal = 850,000, range = 0–4,306,000; CB.17 SCID = 510,987, range = 61.3–938,925; BALB/c IL-4R $\alpha^{-/-}$ /IL-5 $^{-/-}$ = 223,000, range = 39,000–5,200,000).

Human lymphatic endothelium monolayers extend life-span of *B. malayi* adults in culture

Initial experimentation was conducted to determine lifespans of male and female *B. malayi* adult parasites in culture following isolations from IL-4R $\alpha^{-/-}$ /IL-5 $^{-/-}$ mice. Mammalian cell monolayers of human embryonic kidney cells (HEK-293) or human adult dermal lymphatic microvascular endothelial cells (referred to as lymphatic endothelial cells; LEC) were used to test whether their inclusion extended adult *B. malayi* survival, motility and metabolic activity to levels comparable to typically recorded within adult worms of the same age freshly isolated from rodent models. Cell co-cultures were compared with corresponding cell growth media only (Dulbecco's Modified Eagles Medium + 10% foetal calf serum; DMEM+10%FCS or endothelial growth medium 2 microvascular, EGM-2MV, Fig 2). By day 14, females cultured on LEC monolayers displayed high rates of survival (46/48 surviving, 96%, Fig 2A). Other culture conditions showed lower survival by day 14 (HEK = 38/48, 79%, DMEM = 36/48, 75%, EGM-2MV = 32/48, 67%) although survival was not significantly different between culture conditions (Fig 2A). Average (median) motility of surviving female *B. malayi* worms in culture declined from day 6 (HEK) or day 12 (DMEM and EGM-2MV) whereas average motility of females cultured on LECs reflected the vigorous motile phenotype typical of freshly isolated worms (Fig 2B). When evaluated at day 14, average motility was significantly higher compared with other culture conditions (Kruskal-Wallis with Dunn's comparison post-hoc test, $P = 0.0006$, Fig 2C). By comparing the metabolic activity of cultured *B. malayi* females against those freshly recovered from mice, female worms cultured on LEC monolayers displayed, on average, a non-significant 15% reduction in MTT reductase activity (Fig 2D). In comparison, the metabolic activity of female *B. malayi* cultures under other cell-culture conditions exhibited a 58–83% reduction in metabolic activity. The decline in metabolic activity in female *B. malayi* cultured on HEK cells was significant compared to female *B. malayi* cultured on LECs ($P = 0.0098$, Kruskal-Wallis with Dunn's comparisons test Fig 2D).

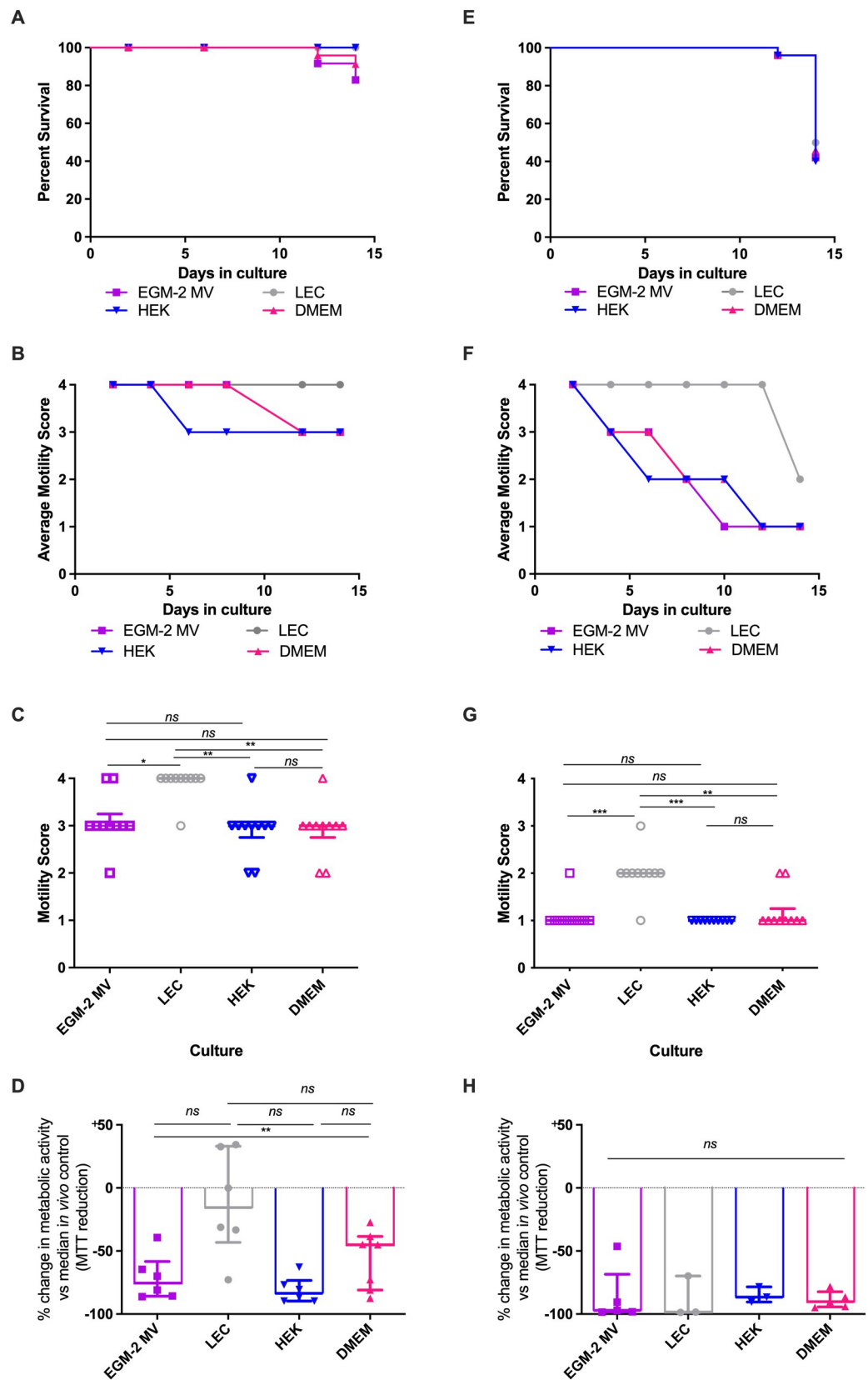


Fig 2. female and male *B. malayi* survival, motility and metabolic activity during culture with different cell and media conditions. (A) Kaplan-Meier survival or (B) average motility of female *B. malayi* over 14 days. (C) Individual female *B. malayi* motility scores or (D) MTT reductase activity of cultured female *B. malayi* at day 14, normalized to median MTT reductase activity in a sample five freshly isolated female *B. malayi* (median optical density = 0.48). (E) Kaplan-Meier survival or (F) average motility of male *B. malayi* over 14 days. (G) Individual male *B. malayi* motility scores or (H) MTT reductase activity of cultured male *B. malayi* at day 14, normalized to median MTT reductase activity in a sample five freshly isolated male *B. malayi* (median optical density = 0.32). Data is combined from 24 culture wells initially containing 48 viable filariae (A,E) or between 6–12 culture wells initially containing 12–24 viable filariae (B-D and F-H). Horizontal bars represent the median with interquartile range. Significance is indicated *** $P < 0.001$, ** $P < 0.01$, * $P < 0.05$ (Kruskal-Wallis with Dunn's multiple comparison's tests).

<https://doi.org/10.1371/journal.pntd.0010474.g002>

Male *B. malayi* deteriorated more rapidly than female *B. malayi* in culture. At day 14, survival was 50% (24/48 males) on LEC monolayers, 40% (19/48) on HEK monolayers, 46% (22/48) in DMEM and 42% (20/48) in EGM-2MV (Fig 2E). Surviving male *B. malayi* cultured on LEC monolayers displayed an average fully motile phenotype until day 12 (Fig 2F) whereas motility immediately began to decline in other culture conditions. At day 14, average motility, whilst sub-optimal, was significantly higher in *B. malayi* male worms cultured on LECs than all other culture conditions (Kruskal-Wallis statistic = 38.48, $P < 0.0001$, with Dunn's multiple comparisons test, Fig 2G). *Brugia malayi* males in all culture conditions had drastically reduced MTT reductase activity in comparison to freshly isolated *in vivo* controls (adult worms) at day 14 (Fig 2H).

A transwell co-culture system further improves female *B. malayi* survival in culture

In attempts to extend culture longevity of fully viable *B. malayi* females for periods ≥ 14 days, a lymphatic / leukocyte co-culture trans-well system was tested. These used a LEC monolayer in EGM-MV, as deemed the best performing culture (Fig 2), with the addition of a LEC or THP-1 human monocyte-derived macrophage (M ϕ) monolayer 6-well 0.4 μ m pore transwell insert. THP-1 M ϕ were either seeded in a non-polarised state or conditioned with recombinant (r) IFN- γ or rIL-4/rIL-13, termed M ϕ (naïve), M ϕ (IFN- γ) or M ϕ (IL-4/13) (Fig 3A). Control LEC cultures (LEC monolayers) supported 100% survival (12/12 female *B. malayi*) for >16 days in culture (Fig 3B). Beyond this point, survival decreased slightly, with 92% (11/12) female *B. malayi* surviving by the 21-day end-point. Similar survival was apparent with LEC+M ϕ (IFN- γ) or LEC+M ϕ (IL-4/13) inserts, whereby 100% survival was maintained for 15 and 16 days (12/12 female *B. malayi*), before declining to 67% (8/12) and 83% (10/12), respectively, by day 21. Full survival was achieved for the duration of the 21-day culture period in LEC+M ϕ (naïve) or LEC+LEC insert co-cultures, a significant improvement on the other culture conditions tested ($P = 0.0027$ Mantel-Cox log-rank test). Full motility was sustained for the 21-day duration with the LEC+M ϕ (naïve) and LEC+LEC insert groups, whilst other groups demonstrated significant declines in motility during the culture period ($P < 0.0001$, Kruskal-Wallis with Dunn's comparison test Fig 3C and 3D). Analysis of metabolic activity in cultured worms at the day 21 end-point, compared against *in vivo* recovered female *B. malayi*, determined an 80% median reduction in metabolic activity of *B. malayi* cultured on LEC monolayers and a 69% reduction in female worms cultured in the presence of LEC+M ϕ (IFN γ) insert (Fig 3E). Metabolic activity was maintained to a level more representative of *in vivo* isolated worms in LEC+M ϕ (naïve), LEC+M ϕ (IL-4/13) and LEC+LEC insert co-cultures after 21-day incubations (22%, 26% and 24% reductions in metabolic activity, respectively). The improvement in metabolic activity supported by LEC+M ϕ (naïve) inserts was significant compared with LEC monolayers ($P = 0.0132$, Kruskal-Wallis with Dunn's comparisons post-hoc test).

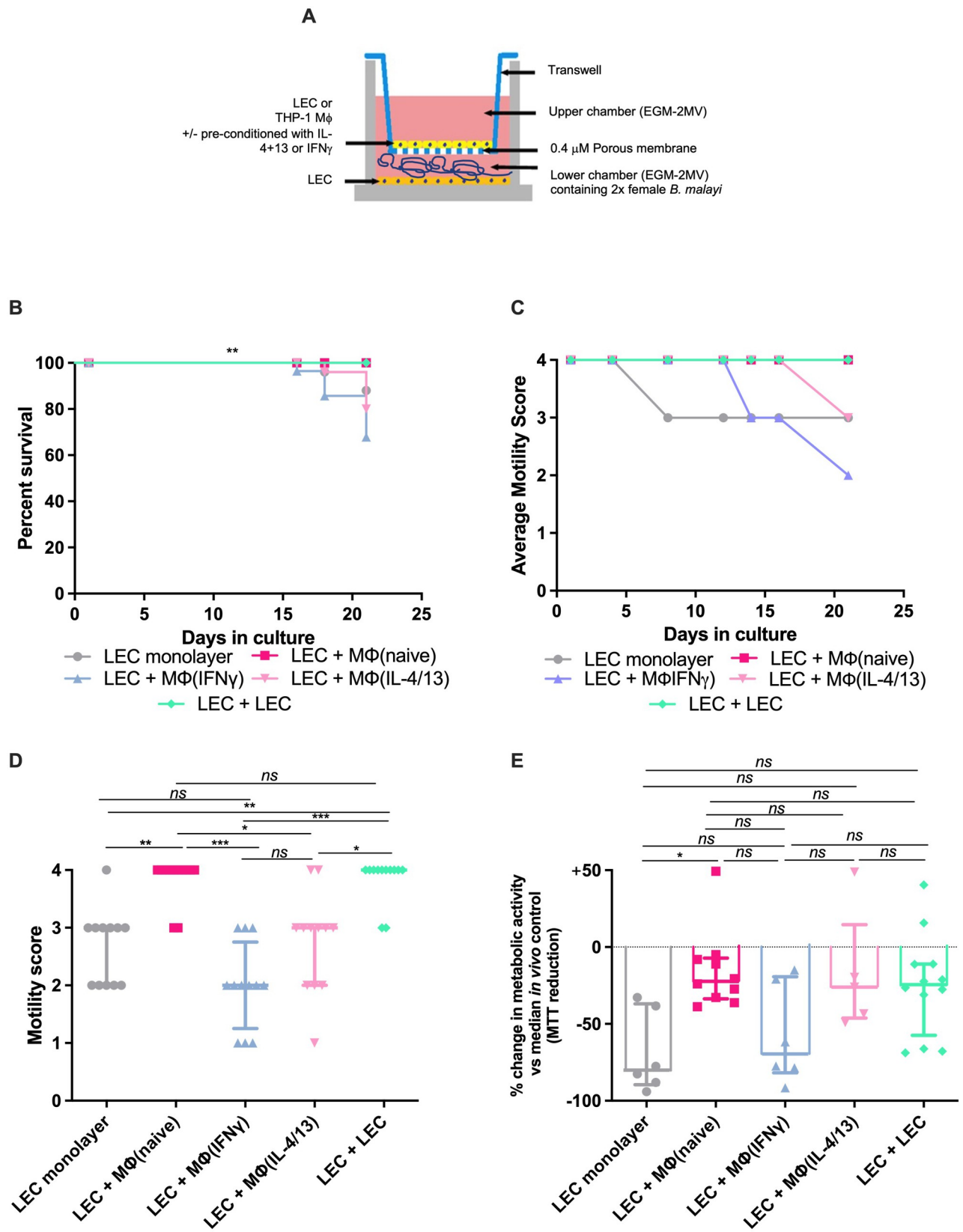


Fig 3. 21 day trans-well adult *B. malayi* female co-culture system with macrophage leukocytes or LEC bilayers. (A) schematic of 2D trans-well co-culture system (B) Kaplein-Meyer survival curves or (C) average motility scores over 21-day culture period. (D) individual motility scores or (E) MTT reductase activity at day 21 normalized to median MTT reductase activity in a sample of five freshly isolated female *B. malayi* (median optical density = 0.48). Data is combined from 6 culture wells initially containing 12 viable female *B. malayi*. Horizontal bars represent the median with interquartile range. Significance is indicated *** $P < 0.001$, ** $P < 0.01$, * $P < 0.05$ (Mantel-Cox log-rank test or Kruskal-Wallis with Dunn's multiple comparison's tests).

<https://doi.org/10.1371/journal.pntd.0010474.g003>

Microfilariae production and *Wolbachia* titres in female *B. malayi* post-culture in LEC bilayers

Microfilariae release by female *B. malayi* into the lower chamber medium of LEC bilayers were assessed after 3, 7 or 14 days of culture (Fig 4A), in which mf production declined with time in culture. At day 3, a median of 2850 mf had been released per female *B. malayi*. This reduced to 300 mf per female at day 7 and 0 mf per female by day 14 ($P < 0.0001$, Kruskal Wallis test). *Wolbachia* yields within female *B. malayi* after 1, 2 or 3 weeks in LEC+LEC insert co-cultures were compared with those from parasites immediately retrieved from IL-4R $\alpha^{-/-}$ IL-5 $^{-/-}$ mice (Fig 4B). After one to two weeks in culture, *Wolbachia* loads were significantly lower, on average by 55%, than *in vivo* controls (both 1.4 vs 3.13×10^7 median *wsp* copies per worm) and by three weeks, levels had declined by 74.4% (0.8 vs 3.12×10^7 median *wsp* copies per worm ($P < 0.005$, Kruskal-Wallis with Dunn's comparisons post-hoc test).

Reductions in metabolic activity and *Wolbachia* content in female *B. malayi* after 2-week cultures in LEC bilayers reflect cessation of mf production

A 21-day culture period with a 6-well $0.4 \mu\text{m}$ pore transwell, LEC co-culture 'bilayer' had been defined as sufficient to maintain female *B. malayi* survival at 100% with full motility. However, metabolic activity, whilst not significantly different from *in vivo* isolated females, was reduced on average by 25% after two weeks in culture and *Wolbachia* content had declined significantly. As mf production was not sustained beyond 7 days *in vitro* (Fig 4A), the cessation of embryogenesis may have impacted on measures of overall metabolic activity and *Wolbachia* content, compared with freshly isolated, gravid female worms. To more accurately interpret whether these measures reflected a real decline in viability or cessation of mf production, a sample of 62 adult female worms were isolated from CB.17 SCID mouse infections, and approximately equal batches were either processed immediately for metabolic activity and *Wolbachia* molecular assays, set up into culture within LEC bilayers, or implanted into naïve CB.17 SCID recipients (Fig 4C). After removal of male worms and 2-week *in vivo* implantation, female worm mf production had ceased. This was confirmed by overnight culture release assays. Although ex-implanted female worms were fully motile, their total metabolic activity had reduced by 17% when compared against freshly isolated female worms from mixed-sex infections (0.55 vs 0.66 median O.D. Fig 4D). Median *Wolbachia* titres within female *B. malayi* ex-implanted worms were 37% significantly lower than those recovered from *in vivo* mixed-sex controls (2.0 vs 3.3×10^7 ; $P < 0.05$, Kruskal-Wallis with Dunn's comparisons post-hoc test, Fig 4E). Reductions in metabolic activity and *Wolbachia* production in female-only explants after two weeks were similar to levels in *B. malayi* cultured on LEC bilayers, which displayed an average 24% decline in metabolic activity (median 0.5 O.D.), and a 45% reduction in *Wolbachia* content (1.8×10^7 vs 3.3×10^7). Levels of metabolic activity and *Wolbachia* were adjudged not to vary significantly between female ex-implanted worms and cultured parasites.

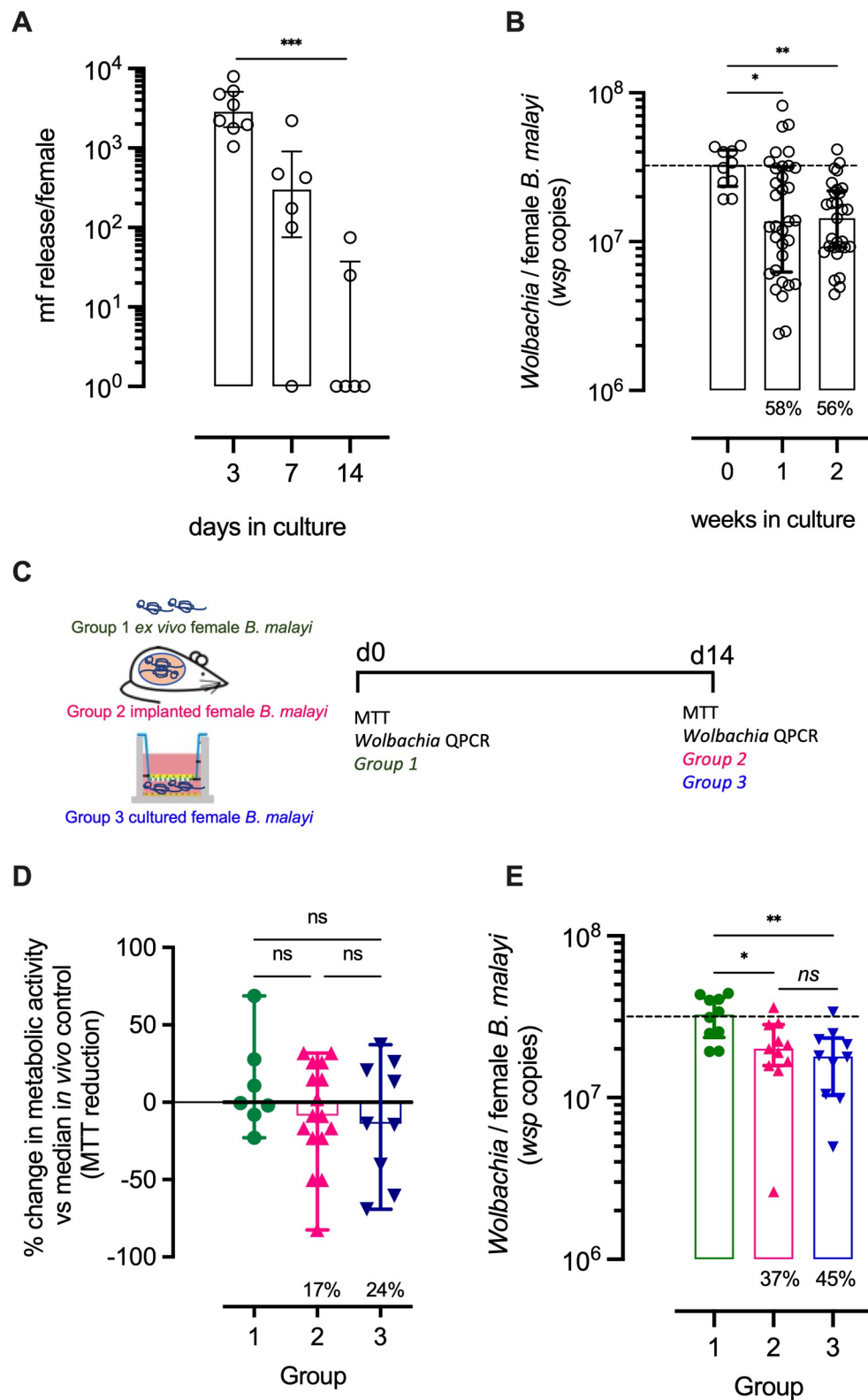


Fig 4. Comparison of *Wolbachia* titres over culture period in relation to *in vivo* recovered parasites. (A) Microfilariae release / female *B. malayi* at days 3, 7 and 14 after culturing in LEC bilayers (B) *Wolbachia* titres / *B. malayi* female removed from IL-4R $\alpha^{-/-}$ IL-5 $^{-/-}$ mice or (week 0) or maintained in LEC bilayer co-cultures for 1 or 2 weeks (C) schematic of experimental groups: group 1; female *B. malayi* freshly isolated from *in vivo* infection (CB.17

SCID mice), group 2; female *B. malayi* 2-weeks after single sex implantation into CB.17 SCID mice, group 3; female *B. malayi* 2-weeks after culture in LCE bilayers. (D) MTT reductase activity and (E) *Wolbachia* titres / *B. malayi* female derived from groups 1–3. Horizontal bars represent medians with interquartile range. Data is derived from a single experiment of 6 cultures (A) combined of three experiments of 6 cultures (B) or a single experiment of 12 cultures (D, E). Statistical significance determined by Kruskal-Wallis one-way ANOVA with Dunn's post-hoc tests are indicated ns; not significant, * $P<0.05$, ** $P<0.01$ and *** $P<0.001$.

<https://doi.org/10.1371/journal.pntd.0010474.g004>

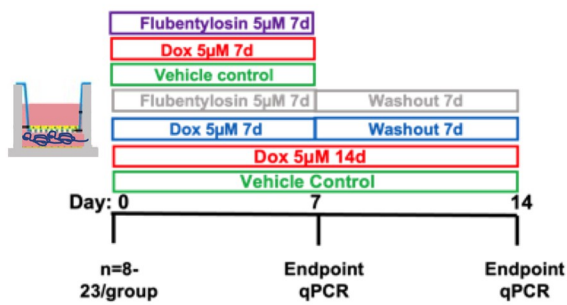
Validation of *B. malayi* female LEC bilayer co-cultures to screen anti-*Wolbachia* drugs

Doxycycline (DOX), and the anti-*Wolbachia* clinical candidate, flubentylosin (ABV-4083), a novel tylosin analogue, were used to validate LEC bilayers as a screening system to evaluate anti-*Wolbachia* drug efficacies. Female *B. malayi* in LEC bilayers were dosed with drug at 5 μM for either 7-days or 14-days before evaluation of efficacy. In certain cultures, drugs were removed following 7-day exposure, parasites washed, and cultures extended for a further 7-day period. Due to significant decline in *Wolbachia* content with time in culture due to loss of mf production (Fig 4), vehicle treated cultures were ran simultaneously and sampled at 7 or 14 days as matched controls (Fig 5A). Negligible changes in survival were observed throughout the study duration (Fig 5A). Whilst there was some decline in average motility between days 7–14 in certain treatment groups, this was also observed in vehicle treated cultures, thus motility was not significantly influenced by DOX or flubentylosin drug exposure (Fig 5B and 5C). After 7-day treatment, both treatments significantly reduced *Wolbachia* levels. Doxycycline depleted *Wolbachia* on average by 77%, whilst treatment with flubentylosin reduced levels by 85% median depletion (5.26×10^6 and 3.47×10^6 median *Wolbachia* load per female vs 2.3×10^7 vehicle control, $P<0.0001$, Kruskal-Wallis with Dunn's comparison post-hoc test, Fig 5D). A further 7 days of DOX treatment maintained a significant 73% decrease in *Wolbachia* load (3.89×10^6 vs 1.44×10^7 median levels, $P<0.0001$, Kruskal-Wallis with Dunn's comparison post-hoc test, Fig 5D). Removal of DOX at day 7 followed by a 7-day washout initiated a recrudescence of *Wolbachia* within the cultured female *B. malayi* worms, resulting in a 57% non-significant reduction of *Wolbachia* (Fig 5E). Contrastingly, 7-days post-removal of flubentylosin, *Wolbachia* recrudescence was not apparent, with a significant median *Wolbachia* reduction of 79% in comparison to the vehicle control group (3.02×10^6 vs 1.44×10^7 median *Wolbachia* loads, $P<0.001$, Kruskal-Wallis with Dunn's comparison post-hoc test, Fig 5E).

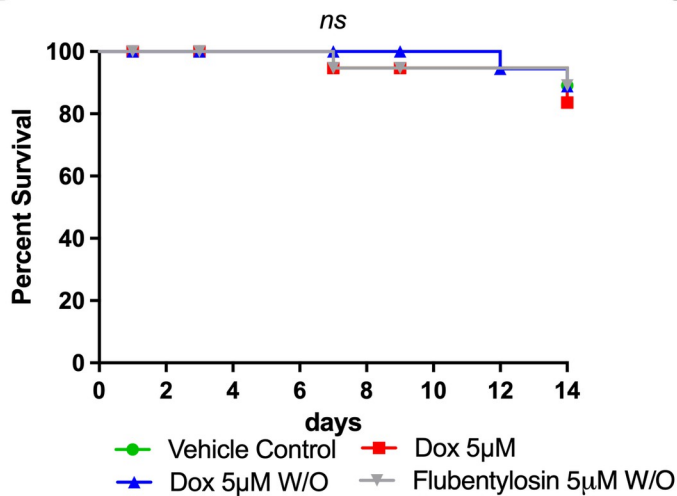
Validation of *B. malayi* female LEC bilayer co-cultures to screen macrofilaricidal drugs

Flubendazole (FBZ) and suramin (SUR), at fixed doses of 10 μM , were used to assess the functionality of the LEC bilayer co-culture system in evaluating direct macrofilaricidal activity (Fig 6A). Vehicle control treated female *B. malayi* retained 100% survival and motility throughout the course of the study, whereas survival declined from 12 days of treatment in both FBZ and SUR treatment groups with 12% surviving after 14 days of SUR treatment and 0% survival with FBZ treatment ($P = 0.0019$ & 0.0003 , respectively, Log-rank Mantel Cox test; Fig 6B). Motility significantly decreased in both drug treatment groups, reducing to average scores of 0 or 1 by day 14 for FBZ and SUR, respectively ($P = 0.0006$, Kruskal-Wallis with Dunn's comparison post-hoc test, Fig 6C and 6D). Quantitative metabolic activity assessment readouts at day 14 revealed significantly lower metabolic activity (72%) in FBZ-treated worms, which also had significantly lower activity in comparison to SUR treated worms, where 28% non-significant reduction compared to the vehicle control was observed ($P<0.0001$, Kruskal-Wallis with Dunn's comparison post-hoc test, Fig 6E).

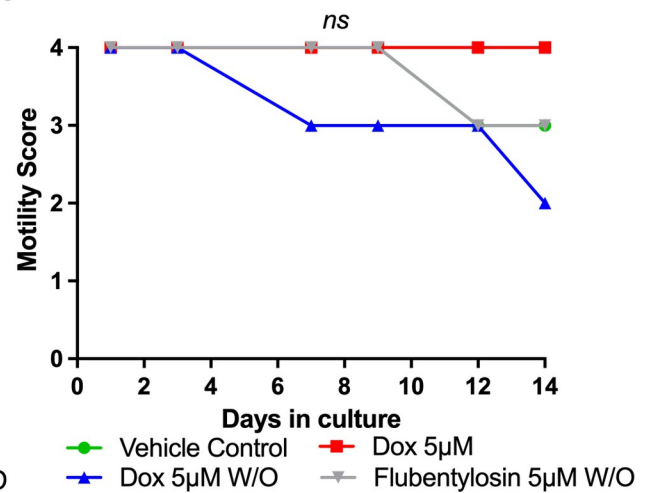
A



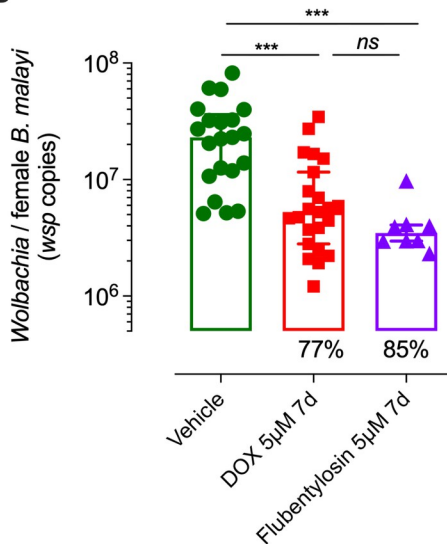
B



C



D



E

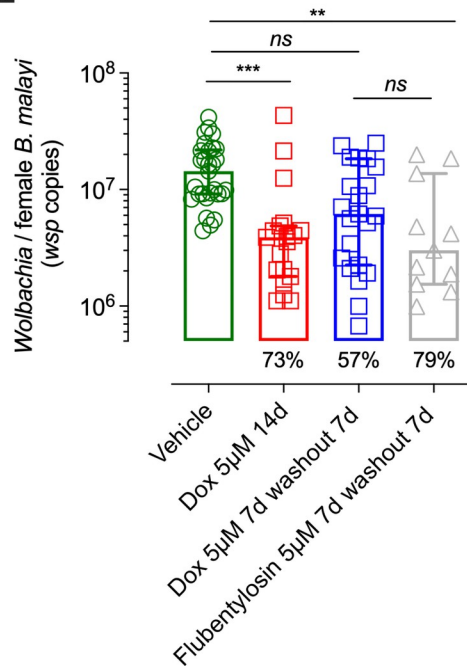


Fig 5. Validation of *B. malayi* female culture system as an anti-*Wolbachia* drug screen. (A) Schematic of anti-*Wolbachia* drug screen (B) Kaplan-Meier survival or (C) average motility of female *B. malayi* over 14 days to indicated exposures of doxycycline (DOX), TylAMac or vehicle (1% DMSO), (D) Anti-*Wolbachia* efficacy following 7 days or (E) 14 days of indicated exposures to DOX, TylAMac or vehicle. Data plotted is *wsp* copy numbers/*Bm* female determined by qPCR (D-E). Data is combined from two experiments with 6 culture wells initially containing 12 viable female *B. malayi* (for vehicle & DOX groups) or a single experiment of 6 culture wells for Flubentylolisin groups. Horizontal bars represent median with interquartile range. Significance is indicated *** $P < 0.001$, ** $P < 0.01$, * $P < 0.05$ (Kruskal-Wallis with Dunn's multiple comparison's tests).

<https://doi.org/10.1371/journal.pntd.0010474.g005>

Discussion

The discovery and development of new macrofilaricidal drugs for the prioritised filarial nematode NTDs: *B. malayi*, *B. timori*, *O. volvulus* and *W. bancrofti*, is hampered by a lack of long-term *in vitro* culture models to robustly test compounds for their effectiveness against the target adult life-cycle stage. This is reflected by deficits in culturing systems to reliably support the full development of human adult filariae from insect-derived, third-stage infective larvae *in vitro*, and a paucity of permissive laboratory models to propagate large quantities of male and female adult worms *in vivo*. 'Two-dimensional' (2D) cultures with human serum and/or monolayers of various mammalian cell lines are sufficient to support the initial growth of larvae through the third and potentially fourth cuticle moults for *B. malayi* [26], *O. volvulus* [27] or *W. bancrofti* [28]. In these studies, whilst certain adult internal organ morphological features can be microscopically determined, growth is severely retarded, with length typically ≥ 20 -fold stunted compared to typical *in vivo* adult parasites. Moreover, sexual maturity and reproduction is not evidenced in these culture experiments. In one exceptional study, the technical feasibility of growing physiologically relevant, sexually mature adult *B. malayi* over 100 days, using cultures supplemented with a single-source of human serum has been demonstrated [29]. However, these data have not been reproduced using similar culture conditions, which is perhaps explained by variation in growth factors essential for filarial development in different sources of human serum [30]. More complex, 2D multi-cell, insert co-culture systems and 3D skin organoid culture scaffolds have been tested for *O. volvulus* which support 'pre-adult' stages surviving in culture for months, yet these *in vitro* generated filariae still display a severely stunted phenotype (typically < 1 mm) not dissimilar to growth achieved when culturing long-term on monkey kidney cell (LL-CMK2) monolayers [11, 31].

With no reliable way of propagating physiologically relevant filarial adult stages from larvae, the only viable approach available for drug screening *in vitro* is to isolate adult filarial worms from animals that are either naturally, or experimentally infected with filariasis. For onchocerciasis, several closely related cattle *Onchocerca* species can be utilised. The female intra-nodular niche is unsuitable for *ex vivo* culture and only by careful collagenase digestion of excised nodules can culture of female stages be supported long-term [32]. Due to their greater abundance within nodule tissues and their natural migratory behaviour between nodules, male *Onchocerca* spp. are more readily isolated and can survive for prolonged periods of several months, when cultured on LL-CMK2 monolayers [32]. This system, using the cattle parasite, *O. gutturosa*, has become adopted as the gold-standard *in vitro* screen to evaluate nematocidal or anti-*Wolbachia* drug candidates [33–36]. However, limitations of the screen are throughput via sourcing infected cattle, mainly within Sub-Saharan Africa, and differential macrofilaricidal susceptibilities between *Onchocerca* and lymphatic filariae (as determined for drugs such as moxidectin and albendazole) [37–40]. Incidence of differential macrofilaricidal activities between male and female worms is another caveat to reliance on this screening system alone [41]. Excised *B. malayi* derived from experimentally infected *Meriones unguiculatus* (Mongolian gerbils) exhibit rapid loss of viability in serum-supplemented media which is reflected by upregulation of a number of stress-response genes over the first five days in culture [42]. A recent study utilising image-based motion analysis demonstrated decline in female *B. malayi*

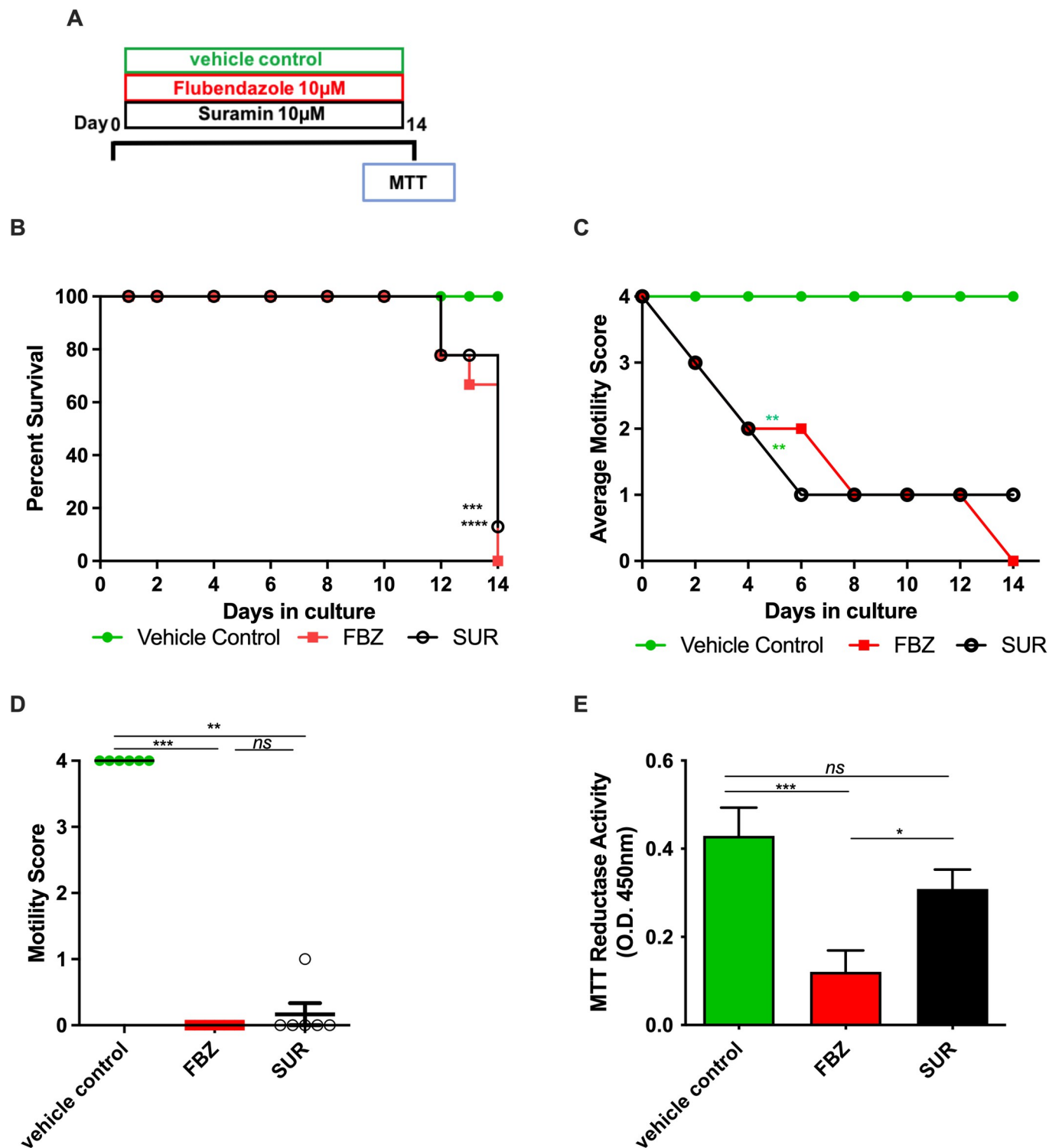


Fig 6. Validation of culture model as a direct-acting macrofilaricidal drug model. (A) Schematic of macrofilaricidal drug screen (B) Kaplan-Meier survival or (C) average motility scores of female *B. malayi* over 14 days during exposure to 10 μ M of flubendazole (FBZ), suramin (SUR) or vehicle (1% DMSO), (D) individual motility scores or (E) MTT reductase activity following 14 days of 10 μ M FBZ, SUR or 1% DMSO vehicle. Data is combined from two experiments with 6 culture wells initially containing 12 viable female *B. malayi*. Horizontal bars represent median with interquartile range. Significance is indicated *** $P < 0.001$, ** $P < 0.01$, * $P < 0.05$ (Kruskal-Wallis with Dunn's multiple comparison's tests).

<https://doi.org/10.1371/journal.pntd.0010474.g006>

motility (a late-stage indicator of *in vitro* fitness) begins at 5–7 days in optimised serum supplemented medium culture [43]. Due to this rapid demise *in vitro*, moderate automated throughput screening utilising motility phenotype as a readout of *Brugia* female macrofilaricidal activity has been limited to a three-day exposure window [44]. This limits hit-compound identification to more rapid-acting agents with drug compounds exerting more gradual killing effects being over-looked. Further, titrations to determine minimum effective concentrations of hit-compounds may generate under-estimates of true efficacy following longer-exposures or washout time-frames. Finally, compounds synergising with artefactual *Brugia* physiology induced by sub-optimal culturing may risk driving identification of false-positive hit compounds.

For these reasons, in this study we wished to advance a more robust and long-term culture model of lymphatic filariasis for drug screening applications. Our aims were to 1) improve *in vivo* propagation by examining whether yields of adult *B. malayi* could be increased with inbred immunodeficient mouse strains, 2) assess lymphatic endothelium / leukocyte 2D co-culture systems to improve the longevity of adult worms in culture, and 3) evaluate reference macrofilaricidal drug responses in long-term culture.

Through an extensive meta-analysis of 32 independent sub-periodic human strain *B. malayi* infection experiments undertaken in our laboratory between 2012–2018, including untreated or vehicle control data derived from published *in vivo* preclinical model development, drug screening or immunological investigations [6, 15, 18–20, 23, 25, 45–49], we determined that immunodeficient mouse strains serve as improved models for propagations of adults. Whilst we have previously described reduced variability of adult worm burden and less frequent occurrence of infection failures in CB.17 SCID mice compared with gerbils [18], we extend our conclusions here that CB.17 SCID mice afford a >3-fold more productive source of adult infections per unit inoculation. Improvements in yields become more pronounced with chronicity of infection with >10-fold increases in adult burdens in >25-week old infections. In addition, we determine that an additional selective immunodeficient mouse model (BALB/c IL-4R α ^{-/-}/IL-5^{-/-}) could persistently yield greater burdens of adult *B. malayi* compared with gerbils, similar to productivity in CB.17 SCID mice. This long-term susceptibility reflects the profound loss of eosinophil-specific mediated immunity in these mice, controlled by IL-4 receptor and IL-5, as detailed in our prior investigations [20]. Increased susceptibility to adult filarial infections in IL-4R^{-/-}/IL-5^{-/-} mice has also been determined for the related filarial parasites, *L. loa* and *S. sigmodontis* [50, 51]. In both mouse models, we noted an increased bias toward female *B. malayi* infections which might indicate residual immune-mediated or other host-dependent factors influencing male survival in mice. We also noted that initial mf accrual within the peritoneum in the first few months of patency, normalised per adult female worm, was most abundant in gerbils, with CB.17 SCID mice being intermediate and IL-4R^{-/-}/IL-5^{-/-} mice displaying significantly reduced mf burdens. Whilst this might appear paradoxical given the increased adult burdens in mice, raised mf burdens in gerbils may reflect more balanced sex ratios in this model. In addition, other adaptive immune-mechanisms distinct from the IL-4 receptor and IL-5 signalling axis and lacking in gerbils and CB.17 SCID mice may exert immune-pressure on mf survival in IL-4R^{-/-}/IL-5^{-/-} mice. In contrast to developing larvae, *B. malayi* mf activate IFN- γ producing lymphocytes in stage-specific BALB/c mouse experimental infections [52]. Our data indicate that CB.17 SCID or BALB/c IL-4R^{-/-}/IL-5^{-/-} mice offer superior alternatives to gerbils specifically where a large demand for mature female *B. malayi* in *ex vivo* research is required, such as drug screening. In our experience, the reduced costs to produce BALB/c IL-4R^{-/-}/IL-5^{-/-} mice in-house and more prolonged infection courses without incurring animal welfare issues compared with CB.17 SCID mice make this research model most suitable to propagate adult female *B. malayi*.

From our initial culture studies, we determined that co-cultures with human primary LEC monolayers extended the period of full motility and survival of mature female *B. malayi* to 14 days. Further analysis of metabolic activity confirmed that female adult *B. malayi* displayed only minor reductions compared with freshly isolated parasites from BALB/c IL-4R^{-/-}/IL-5^{-/-} mice. This extended, fully viable life-span in culture was specific to the presence of LEC cells in culture as neither full endothelial growth medium nor human embryonic kidney cells could emulate the extended survival time. Our data is consistent with a recent publication demonstrating benefit of co-culture with a mouse endothelial cell line monolayer in augmenting survival of mf and adult *L. sigmodontis* [8]. Because in this study conditioned medium derived from endothelial cell cultures supported full survival of adult worms for 15 days, a hypothesis was proposed that endothelial cell-restricted macromolecules and metabolites released into culture provide a necessary source of nutrition to support *in vitro* adult worm fitness [8]. An alternative hypothesis proffered is that host cell monolayers may modify oxygen content in the liquid phase which favours filarial nematode survival [30]. Whilst LEC monolayers also extended the male *B. malayi* life-span *in vitro*, males cultured declined in viability from 12 days, and metabolic activity, motility, and percentage survival was severely reduced by day 14. We conclude that, unlike *Onchocerca spp.*, it is more challenging to extend male vs female lymphatic filarial life-spans *in vitro*. Whilst the reasons for this are not clear, we speculate the smaller size and rapid motility of male *B. malayi* may make them more vulnerable to depletion of inherent energy stores which they are unable to sustainably replenish in culture.

Upon selection of a favourable monolayer and *B. malayi* adult-stage, we wished to test whether a mixture of leukocytes and lymphatic endothelium could emulate the lymphatic / lymphoid parasitic niche of the lymphatic system to further prolong longevity in culture. We selected a monocytic-Mφ human THP-1 cell line to test as representative of abundant circulating or patrolling monocytes within the circulatory / lymphatic systems as well as major resident populations within afferent lymphatic-lymph node junctions [53]. Thus, we hypothesised monocyte-macrophage lineage cells would naturally occur in intimate and frequent contact with lymphatic-dwelling filariae *in vivo*. Further, because lymphocytes are absent, yet peritoneal Mφ constitute as much as 50% of the white blood cells found within the long-term permissive CB.17 SCID *B. malayi* infection model, we speculated that this leukocytic cell may provide a source of nutritional factors suitable for supporting long-term parasite survival in the absence of a strong eosinophil larvicidal/adulticidal immune effector response. Finally, in support of this hypothesis of the Mφ as a 'feeder cell', in earlier studies, we observed improved survival of *B. malayi* larvae when cultured with peritoneal Mφ [54]. Because LF patients display a spectrum of T cell activation states that can influence the activation and metabolic status of Mφ via differential cytokine production [54–56], we artificially polarised THP-1 Mφ toward a classical (M1) or alternative (M2) phenotype with pre-exposure of recombinant IFNγ or IL-4/IL-13 [23]. We determined that non-polarised Mφ in an upper chamber with LEC mono-layers in contact with filariae in the lower chamber improved full female *B. malayi* survival and motility for 3-weeks and maintained metabolic activity at approximately 75% of *in vivo* levels, indicating that these cells may provide an additional source of soluble factors to prolong adult lymphatic filarial survival *ex vivo*. Mφ conditioned with IL-4/13 also appeared somewhat beneficial. Contrastingly, IFNγ conditioned Mφ were marginally detrimental in *B. malayi* female *in vitro* fitness at 3 weeks, compared with LEC monolayers. This perhaps reflects production of soluble released mediators by classically-activated Mφ, such as nitric oxide, which are toxic to adult *B. malayi* in culture [57, 58]. Surprisingly, the inclusion of a further LEC mono-layer in the upper chamber re-capitulated full survival, motility and sustained metabolic activity observed with non-polarised Mφ+LEC co-cultures.

Given the simplicity of working with a single versus a double cell system, we opted to take forward the LEC bi-layer system for further validation as a drug screening system, including for anti-*Wolbachia* compound assessments. However, the transwell co-culture system could be of benefit in future applications to study other immune and non-immune cell types. We determined that *Wolbachia* content significantly declined with time in culture. *Wolbachia* are found both in somatic tissues of the hypodermis and the female germline, where populations expand within all embryonic stages [59, 60]. Female embryogenesis ceases in the absence of male mating *in vitro* (as evidenced by loss of mf production by 14 days in culture). By implanting single sex female worms into CB.17 SCID mice for periods matching those in culture (and thus blocking fertilisation *in vivo*) before estimating total *Wolbachia* content, we deduced that *Wolbachia* decline reflected a natural loss of embryogenesis and mf production. Further, the minor impact in metabolic activity of cultured *B. malayi* within LEC bi-layer cultures were similar to reductions following cessation of the embryogenesis pathway *in vivo*; a biological pathway of high metabolic demand. Thus, we conclude that notwithstanding loss of mf gestation, our *in vitro* LEC bi-layer system supports fully viable female *B. malayi* in culture for three weeks.

We subsequently demonstrated the advantage of being able to sustain fully viable *B. malayi* females for prolonged periods *in vitro* to accurately discriminate efficacy of anti-filarial drugs using physiologically relevant fixed dose concentrations (5–10 μ M). Over a two-week period, the system was able to discern the inferior efficacy of the slower-acting anti-*Wolbachia* agent, doxycycline, versus the more potent novel tylosin analogue, flubentylisin, over a one-week exposure interval, as previously determined in animal infection models [25, 45, 47, 61]. Following doxycycline drug removal at one week, *Wolbachia* levels recrudesced by two weeks, a phenomenon consistently observed when using sub-optimal dosing of tetracyclines or rifamycins to treat *Brugia* or *Litomosoides* *in vivo* [25, 45, 47, 61]. Observing *Wolbachia* re-expansion within female *B. malayi* following drug removal is confirmation of the *in vitro* health of the *Wolbachia*-filarial symbiosis in our culture system. Thus, we have confidence that this culture system could be applied in the future to evaluate anti-*Wolbachia* candidates with putatively faster kinetics of symbiont depletion compared with registered antibiotics and to investigate mode-of-action and target identification studies. LEC bi-layer maintenance of female *B. malayi* was also successfully validated as an effective model in determining the long-term impact of the direct-acting nematocidal agents, flubendazole or suramin. The pharmacology of flubendazole has been recently better fully characterised, whereby sustained release of injectable formulations for several weeks are necessary to exert significant macrofilaricidal activities against *Brugia* and *Onchocerca* filarial parasites in preclinical infection models [48, 62]. Conversely, it has been challenging to emulate flubendazole sustained exposure and macrofilaricidal activity *in vitro* or with mixed *in vitro* / *in vivo* *B. malayi* systems due to limitations in culture period [63, 64]. Our findings demonstrate that periods of two weeks in culture are necessary to determine macrofilaricidal activity of this benzimidazole drug at physiologically relevant dose concentrations. Therefore, our culture screening system might be useful to elucidate the pharmacodynamics of other members of the benzimidazole class against *B. malayi*, including albendazole [39] and oxfendazole [33] in deployment or in clinical development as alternative treatment strategies for lymphatic filariasis and onchocerciasis, respectively.

In conclusion, we have established an improved method for both *in vivo* propagations and *in vitro* maintenance of female *B. malayi*. We have demonstrated the utility of this approach for improving accuracy of assessing efficacy of anti-*Wolbachia* and direct-acting nematocidal agents. The culture system could be deployed to more accurately evaluate the potential translation of 'hit' compounds against lymphatic filariasis following chronic drug exposures

and to compare efficacy against *Onchocerca* spp. We recognise that the complexity of a 2–3 week-long LEC bi-layer culture system in current large well format (6-well) is unlikely to be adopted as a screen with moderate-throughput capacity. Miniaturisation into 24–48 well plates may be possible but will require onward careful evaluation of female *B. malayi* *in vitro* fitness over multiple weeks. As an alternative, this culture system may be incorporated as a secondary confirmatory screen to robustly validate initial hits identified in moderate screening systems and aid rational selection of compounds for advancement into *in vivo* preclinical testing. In this way, the screen may filter out false hit compounds that are synergising with stress responses in sub-optimal *in vitro* systems or compounds with differential active against surrogate life-cycle stages such as filarial mf. Similarly, LEC bi-layers can be utilised to determine efficacies that manifest more gradually at physiologically achievable dose concentrations prior to selection for animal testing. As an example application, we have utilised *B. malayi* female LEC bi-layers as a secondary screen following hit-identification against mf in the discovery of dihydrobenzoxazepinone compounds with broad-spectrum anthelmintic activities [65]. Further opportunities for innovation include incorporation of this long-term co-culture model with human hepatic organoids via a microfluidics physiological system (‘organ-on-a-chip’) to more accurately model drug metabolism and *in vivo* pharmacokinetics of late-stage candidate anti-filarial drugs. As such, the novel methodologies described herein, if adopted, should reduce overall animal use, lower costs and improve decision making toward expediting new curative drugs for filarial NTDS.

Author Contributions

Conceptualization: Mark J. Taylor, Joseph D. Turner.

Data curation: Amy E. Marriott.

Formal analysis: Amy E. Marriott, John Archer, Joseph D. Turner.

Funding acquisition: Mark J. Taylor, Joseph D. Turner.

Investigation: Amy E. Marriott, Julio Furlong Silva, Nicolas Pionnier, Hanna Sjoberg, John Archer, Andrew Steven.

Methodology: Amy E. Marriott, Julio Furlong Silva, Nicolas Pionnier, Hanna Sjoberg, John Archer, Andrew Steven.

Project administration: Joseph D. Turner.

Resources: Dale Kempf, Mark J. Taylor, Joseph D. Turner.

Supervision: Joseph D. Turner.

Writing – original draft: Amy E. Marriott, Joseph D. Turner.

Writing – review & editing: Amy E. Marriott, Joseph D. Turner.

References

1. Global programme to eliminate lymphatic filariasis: progress report, 2011. *Releve epidemiologique hebdomadaire*. 2012; 87(37):346–56. Epub 2012/09/18. PMID: [22977953](#).
2. Zeldenryk L, Gordon S, Gray M, Speare R, Melrose W. Disability measurement for lymphatic filariasis: a review of generic tools used within morbidity management programs. *PLoS Negl Trop Dis*. 2012; 6(9): e1768-e. Epub 2012/09/27. <https://doi.org/10.1371/journal.pntd.0001768> PMID: [23029569](#).
3. Group NTDMCLF. The roadmap towards elimination of lymphatic filariasis by 2030: insights from quantitative and mathematical modelling. *Gates Open Res*. 2019; 3:1538-. <https://doi.org/10.12688/gatesopenres.13065.1> PMID: [31728440](#).

4. Forrer A, Wanji S, Obie ED, Nji TM, Hamill L, Ozano K, et al. Why onchocerciasis transmission persists after 15 annual ivermectin mass drug administrations in South-West Cameroon. *BMJ Global Health*. 2021; 6(1):e003248. <https://doi.org/10.1136/bmjgh-2020-003248> PMID: 33431378
5. Clare RH, Clark R, Bardelle C, Harper P, Collier M, Johnston KL, et al. Development of a High-Throughput Cytometric Screen to Identify Anti-Wolbachia Compounds: The Power of Public-Private Partnership. *SLAS Discov*. 2019; 24(5):537–47. Epub 2019/04/08. <https://doi.org/10.1177/2472555219838341> PMID: 30958712.
6. Hong WD, Benayoud F, Nixon GL, Ford L, Johnston KL, Clare RH, et al. AWZ1066S, a highly specific anti-Wolbachia drug candidate for a short-course treatment of filariasis. *Proc Natl Acad Sci U S A*. 2019; 116(4):1414–9. Epub 20190107. <https://doi.org/10.1073/pnas.1816585116> PMID: 30617067; PubMed Central PMCID: PMC6347715.
7. Storey B, Marcellino C, Miller M, Maclean M, Mostafa E, Howell S, et al. Utilization of computer processed high definition video imaging for measuring motility of microscopic nematode stages on a quantitative scale: "The Worminator". *International journal for parasitology Drugs and drug resistance*. 2014; 4(3):233–43. Epub 2014/12/18. <https://doi.org/10.1016/j.ijpddr.2014.08.003> PMID: 25516834; PubMed Central PMCID: PMC4266792.
8. Evans H, Flynn AF, Mitre E. Endothelial cells release soluble factors that support the long-term survival of filarial worms in vitro. *Exp Parasitol*. 2016; 170:50–8. Epub 20160824. <https://doi.org/10.1016/j.exppara.2016.08.004> PMID: 27565719; PubMed Central PMCID: PMC5115618.
9. Zofou D, Fombad FF, Gandjui NVT, Njouendou AJ, Kengne-Ouafo AJ, Ndongmo PWC, et al. Evaluation of in vitro culture systems for the maintenance of microfilariae and infective larvae of *Loa loa*. *Parasites & Vectors*. 2018; 11(1):275. <https://doi.org/10.1186/s13071-018-2852-2> PMID: 29716646
10. Njouendou AJ, Kien CA, Esum ME, Ritter M, Chounna Ndongmo WP, Fombad FF, et al. In vitro maintenance of *Mansonella perstans* microfilariae and its relevance for drug screening. *Experimental Parasitology*. 2019; 206:107769. <https://doi.org/10.1016/j.exppara.2019.107769> PMID: 31580876
11. Voronin D, Tricoche N, Jawahar S, Shlossman M, Bulman CA, Fischer C, et al. Development of a preliminary in vitro drug screening assay based on a newly established culturing system for pre-adult fifth-stage *Onchocerca volvulus* worms. *PLoS Negl Trop Dis*. 2019; 13(1):e0007108. <https://doi.org/10.1371/journal.pntd.0007108> PMID: 30653499
12. Townson S, Connelly C, Dobinson A, Muller R. Drug activity against *Onchocerca gutturosa* males in vitro: a model for chemotherapeutic research on onchocerciasis. *Journal of Helminthology*. 1987; 61(4):271–81. Epub 2009/06/05. <https://doi.org/10.1017/s0022149x00010178> PMID: 3437107
13. Ash LR. Chronic *Brugia pahangi* and *Brugia malayi* infections in *Meriones unguiculatus*. *J Parasitol*. 1973;59. <https://doi.org/10.2307/3278769> PMID: 4123106
14. Ash LR, Riley JM. Development of subperiodic *Brugia malayi* in the jird, *Meriones unguiculatus*, with notes on infections in other rodents. *J Parasitol*. 1970; 56(5):969–73. Epub 1970/10/01. PMID: 5504534.
15. Halliday A, Guimaraes AF, Tyrer HE, Metuge HM, Patrick CNW, Arnaud K-OJ, et al. A murine macrofilaricide pre-clinical screening model for onchocerciasis and lymphatic filariasis. *Parasites & Vectors*. 2014; 7(1):472. <https://doi.org/10.1186/s13071-014-0472-z> PMID: 25338621
16. Nelson FK, Greiner DL, Shultz LD, Rajan TV. The immunodeficient scid mouse as a model for human lymphatic filariasis. *J Exp Med*. 1991;173. <https://doi.org/10.1084/jem.173.3.659> PMID: 1997651
17. Pionnier NP, Sjoberg H, Chunda VC, Fombad FF, Chounna PW, Njouendou AJ, et al. Mouse models of *Loa loa*. *Nature Communications*. 2019; 10(1):1429. <https://doi.org/10.1038/s41467-019-09442-0> PMID: 30926803
18. Marriott AE, Sjoberg H, Tyrer H, Gamble J, Murphy E, Archer J, et al. Validation of ultrasound bioimaging to predict worm burden and treatment efficacy in preclinical filariasis drug screening models. *Scientific Reports*. 2018; 8(1):5910. <https://doi.org/10.1038/s41598-018-24294-2> PMID: 29651095
19. Turner JD, Pionnier N, Furlong-Silva J, Sjoberg H, Cross S, Halliday A, et al. Interleukin-4 activated macrophages mediate immunity to filarial helminth infection by sustaining CCR3-dependent eosinophilia. *PLOS Pathogens*. 2018; 14(3):e1006949. <https://doi.org/10.1371/journal.ppat.1006949> PMID: 29547639
20. Pionnier N, Sjoberg H, Furlong-Silva J, Marriott A, Halliday A, Archer J, et al. Eosinophil-Mediated Immune Control of Adult Filarial Nematode Infection Can Proceed in the Absence of IL-4 Receptor Signaling. *The Journal of Immunology*. 2020;ji1901244. <https://doi.org/10.4049/jimmunol.1901244> PMID: 32571840
21. Rao RU, Moussa H, Weil GJ. *Brugia malayi*: effects of antibacterial agents on larval viability and development in vitro. *Exp Parasitol*. 2002; 101(1):77–81. [https://doi.org/10.1016/s0014-4894\(02\)00019-x](https://doi.org/10.1016/s0014-4894(02)00019-x) PMID: 12243742.
22. Smith MP, Young H, Hurlstone A, Wellbrock C. Differentiation of THP1 Cells into Macrophages for Transwell Co-culture Assay with Melanoma Cells. *Bio-protocol*. 2015; 5(21):e1638. <https://doi.org/10.21769/BioProtoc.1638> PMID: 27034969

23. Furlong-Silva J, Cross SD, Marriott AE, Pionnier N, Archer J, Steven A, et al. Tetracyclines improve experimental lymphatic filariasis pathology by disrupting interleukin-4 receptor-mediated lymphangiogenesis. *The Journal of Clinical Investigation*. 2021; 131(5). <https://doi.org/10.1172/JCI140853> PMID: 33434186
24. von Geldern TW, Morton HE, Clark RF, Brown BS, Johnston KL, Ford L, et al. Discovery of ABBV-4083, a novel analog of Tylosin A that has potent anti-Wolbachia and anti-filarial activity. *PLoS Negl Trop Dis*. 2019; 13(2):e0007159. <https://doi.org/10.1371/journal.pntd.0007159> PMID: 30818326
25. Taylor MJ, von Geldern TW, Ford L, Hübner MP, Marsh K, Johnston KL, et al. Preclinical development of an oral anti-Wolbachia macrolide drug for the treatment of lymphatic filariasis and onchocerciasis. *Sci Transl Med*. 2019; 11(483). <https://doi.org/10.1126/scitranslmed.aau2086> PMID: 30867321.
26. Mak JW, Lim PKC, Sim BKL, Liew LM. *Brugia malayi* and *B. pahangi*: Cultivation in vitro of infective larvae to the fourth and fifth stages. *Experimental Parasitology*. 1983; 55(2):243–8. [https://doi.org/10.1016/0014-4894\(83\)90018-8](https://doi.org/10.1016/0014-4894(83)90018-8).
27. Gandjui NVT, Njouendou AJ, Gemeg EN, Fombad FF, Ritter M, Kien CA, et al. Establishment of an in vitro culture system to study the developmental biology of *Onchocerca volvulus* with implications for anti-*Onchocerca* drug discovery and screening. *PLoS Negl Trop Dis*. 2021; 15(2):e0008513. <https://doi.org/10.1371/journal.pntd.0008513> PMID: 33561123
28. Franke ED, Riberu W, Wiady I. In vitro cultivation of third stage larvae of *Wuchereria bancrofti* to the fourth stage. *Am J Trop Med Hyg*. 1987; 37(2):370–5. Epub 1987/09/01. <https://doi.org/10.4269/ajtmh.1987.37.370> PMID: 3310688
29. Riberu WA, Atmosoedjono S, Purnomo, Tirtokusumo S, Bangs MJ, Baird JK. Cultivation of Sexually Mature *Brugia malayi* In Vitro. *The American Journal of Tropical Medicine and Hygiene*. 1990; 43(1):3–5. <https://doi.org/10.4269/ajtmh.1990.43.3> PMID: 2382762
30. Cupp MS. Perspectives on the in vitro culture of filariae. *In Vitro Cell Dev Biol*. 1991; 27a(6):505–8. Epub 1991/06/01. <https://doi.org/10.1007/BF02631152> PMID: 1869493.
31. Malkmus C, Jawahar S, Tricoche N, Lustigman S, Hansmann J. Preliminary evaluations of 3-dimensional human skin models for their ability to facilitate in vitro the long-term development of the debilitating obligatory human parasite *Onchocerca volvulus*. *PLoS Negl Trop Dis*. 2020; 14(11):e0008503. Epub 2020/11/06. <https://doi.org/10.1371/journal.pntd.0008503> PMID: 33151944; PubMed Central PMCID: PMC7671495.
32. Townson S, Connelly C, Muller R. Optimization of culture conditions for the maintenance of *Onchocerca gutturosa* adult worms in vitro. *J Helminthol*. 1986; 60(4):323–30. Epub 1986/12/01. <https://doi.org/10.1017/s0022149x00008579> PMID: 3098829
33. Hübner MP, Martin C, Specht S, Koschel M, Dubben B, Frohberger SJ, et al. Oxfendazole mediates macrofilaricidal efficacy against the filarial nematode *Litomosoides sigmodontis* in vivo and inhibits *Onchocerca spec.* motility in vitro. *PLoS Negl Trop Dis*. 2020; 14(7):e0008427. <https://doi.org/10.1371/journal.pntd.0008427> PMID: 32628671
34. Hübner MP, Townson S, Gokool S, Tagboto S, Maclean MJ, Verocai GG, et al. Evaluation of the in vitro susceptibility of various filarial nematodes to emodepside. *International journal for parasitology Drugs and drug resistance*. 2021; 17:27–35. <https://doi.org/10.1016/j.ijpddr.2021.07.005> PMID: 34339934.
35. Townson S, Hutton D, Siemienska J, Hollick L, Scanlon T, Tagboto SK, et al. Antibiotics and Wolbachia in filarial nematodes: antifilarial activity of rifampicin, oxytetracycline and chloramphenicol against *Onchocerca gutturosa*, *Onchocerca lienalis* and *Brugia pahangi*. *Ann Trop Med Parasitol*. 2000; 94(8):801–16. Epub 2001/02/24. <https://doi.org/10.1080/00034980020027988> PMID: 11214099.
36. Townson S, Tagboto S, McGarry HF, Egerton GL, Taylor MJ. *Onchocerca* parasites and Wolbachia endosymbionts: evaluation of a spectrum of antibiotic types for activity against *Onchocerca gutturosa* in vitro. *Filaria J*. 2006; 5:4. Epub 2006/03/28. <https://doi.org/10.1186/1475-2883-5-4> PMID: 16563157; PubMed Central PMCID: PMC1471782.
37. Awadzi K, Opoku NO, Attah SK, Lazdins-Helds J, Kuesel AC. A randomized, single-ascending-dose, ivermectin-controlled, double-blind study of moxidectin in *Onchocerca volvulus* infection. *PLoS Negl Trop Dis*. 2014;8. <https://doi.org/10.1371/journal.pntd.0002953> PMID: 24968000
38. Verma M, Pathak M, Shahab M, Singh K, Mitra K, Misra-Bhattacharya S. Moxidectin causes adult worm mortality of human lymphatic filarial parasite *Brugia malayi* in rodent models. *Folia Parasitol (Praha)*. 2014; 61(6):561–70. Epub 2015/02/06. PMID: 25651699.
39. Pion SDS, Chesnais CB, Awaca-Uvon NP, Vlaminc J, Abdou A, Kunyu-Shako B, et al. The impact of four years of semiannual treatments with albendazole alone on lymphatic filariasis and soil-transmitted helminth infections: A community-based study in the Democratic Republic of the Congo. *PLoS Negl Trop Dis*. 2020; 14(6):e0008322. Epub 2020/06/24. <https://doi.org/10.1371/journal.pntd.0008322> PMID: 32574160; PubMed Central PMCID: PMC7337406.
40. Batsa Debrah L, Klarmann-Schulz U, Osei-Mensah J, Dubben B, Fischer K, Mubarik Y, et al. Comparison of Repeated Doses of Ivermectin Versus Ivermectin Plus Albendazole for the Treatment of Onchocerciasis:

- A Randomized, Open-label, Clinical Trial. *Clin Infect Dis*. 2020; 71(4):933–43. Epub 2019/09/20. <https://doi.org/10.1093/cid/ciz889> PMID: 31536624; PubMed Central PMCID: PMC7428389.
41. Kashyap SS, Verma S, Voronin D, Lustigman S, Kulke D, Robertson AP, et al. Emodepside has sex-dependent immobilizing effects on adult *Brugia malayi* due to a differentially spliced binding pocket in the RCK1 region of the SLO-1 K channel. *PLoS Pathog*. 2019; 15(9):e1008041. Epub 2019/09/26. <https://doi.org/10.1371/journal.ppat.1008041> PMID: 31553770; PubMed Central PMCID: PMC6779273 selling veterinary products containing the drug emodepside used in this study.
 42. Ballesteros C, Tritten L, O'Neill M, Burkman E, Zaky WI, Xia J, et al. The Effect of In Vitro Cultivation on the Transcriptome of Adult *Brugia malayi*. *PLoS Negl Trop Dis*. 2016; 10(1):e0004311. <https://doi.org/10.1371/journal.pntd.0004311> PMID: 26727204
 43. Lu IM, Kassiss T, Rogers AM, Schudel A, Weil J, Evans CC, et al. Optimization of culture and analysis methods for enhancing long-term *Brugia malayi* survival, molting and motility in vitro. *Parasitology Open*. 2018; 4:e3. Epub 2018/01/11. <https://doi.org/10.1017/pao.2017.19>
 44. Marcellino C, Gut J, Lim KC, Singh R, McKerron J, Sakanari J. WormAssay: a novel computer application for whole-plate motion-based screening of macroscopic parasites. *PLoS Negl Trop Dis*. 2012;6. <https://doi.org/10.1371/journal.pntd.0001494> PMID: 22303493
 45. Sharma R, Al Jayoussi G, Tyrer HE, Gamble J, Hayward L, Guimaraes AF, et al. Minocycline as a repurposed anti-Wolbachia macrofilaricide: superiority compared with doxycycline regimens in a murine infection model of human lymphatic filariasis. *Sci Rep*. 2016; 6:23458. Epub 2016/03/22. <https://doi.org/10.1038/srep23458> PMID: 26996237; PubMed Central PMCID: PMC4800446.
 46. Turner JD, Sharma R, Al Jayoussi G, Tyrer HE, Gamble J, Hayward L, et al. Albendazole and antibiotics synergize to deliver short-course anti-Wolbachia curative treatments in preclinical models of filariasis. *Proceedings of the National Academy of Sciences of the United States of America*. 2017; 114(45):E9712–E21. Epub 2017/10/23. <https://doi.org/10.1073/pnas.1710845114> PMID: 29078351.
 47. Aljayoussi G, Tyrer HE, Ford L, Sjöberg H, Pionnier N, Waterhouse D, et al. Short-Course, High-Dose Rifampicin Achieves Wolbachia Depletion Predictive of Curative Outcomes in Preclinical Models of Lymphatic Filariasis and Onchocerciasis. *Sci Rep*. 2017; 7(1):210. Epub 2017/03/18. <https://doi.org/10.1038/s41598-017-00322-5> PMID: 28303006; PubMed Central PMCID: PMC5428297.
 48. Sjöberg HT, Pionnier N, Aljayoussi G, Metuge HM, Njouendou AJ, Chunda VC, et al. Short-course, oral flubendazole does not mediate significant efficacy against *Onchocerca* adult male worms or *Brugia* microfilariae in murine infection models. *PLoS Negl Trop Dis*. 2019; 13(1):e0006356. <https://doi.org/10.1371/journal.pntd.0006356> PMID: 30650071
 49. Bakowski Malina A, Shihoodi Roohollah K, Liu R, Olejniczak J, Yang B, Gagaring K, et al. Discovery of short-course antiwolbachial quinazolines for elimination of filarial worm infections. *Science Translational Medicine*. 2019; 11(491):eaav3523. <https://doi.org/10.1126/scitranslmed.aav3523> PMID: 31068442
 50. Frohberger SJ, Ajendra J, Surendar J, Stamminger W, Ehrens A, Buerfent BC, et al. Susceptibility to *L. sigmodontis* infection is highest in animals lacking IL-4R/IL-5 compared to single knockouts of IL-4R, IL-5 or eosinophils. *Parasites & Vectors*. 2019; 12(1):248. <https://doi.org/10.1186/s13071-019-3502-z> PMID: 31109364
 51. Tendongfor N, Wanji S, Ngwa JC, Esum ME, Specht S, Enyong P, et al. The human parasite *Loa loa* in cytokine and cytokine receptor gene knock out BALB/c mice: survival, development and localization. *Parasit Vectors*. 2012;5.
 52. Lawrence RA, Allen JE, Osborne J, Maizels RM. Adult and microfilarial stages of the filarial parasite *Brugia malayi* stimulate contrasting cytokine and Ig isotype responses in BALB/c mice. *The Journal of Immunology*. 1994; 153(3):1216. PMID: 7913112
 53. Gray EE, Cyster JG. Lymph node macrophages. *J Innate Immun*. 2012; 4(5–6):424–36. Epub 2012/04/11. <https://doi.org/10.1159/000337007> PMID: 22488251; PubMed Central PMCID: PMC3574571.
 54. Babu S, Nutman TB. Immunology of lymphatic filariasis. *Parasite Immunol*. 2014; 36(8):338–46. <https://doi.org/10.1111/pim.12081> PMID: 24134686.
 55. O'Neill LA, Pearce EJ. Immunometabolism governs dendritic cell and macrophage function. *J Exp Med*. 2016; 213(1):15–23. Epub 2015/12/24. <https://doi.org/10.1084/jem.20151570> PMID: 26694970; PubMed Central PMCID: PMC4710204.
 56. Babu S, Blauvelt CP, Kumaraswami V, Nutman TB. Regulatory Networks Induced by Live Parasites Impair Both Th1 and Th2 Pathways in Patent Lymphatic Filariasis: Implications for Parasite Persistence. *The Journal of Immunology*. 2006; 176(5):3248. <https://doi.org/10.4049/jimmunol.176.5.3248> PMID: 16493086
 57. Taylor MJ, Cross HF, Mohammed AA, Trees AJ, Bianco AE. Susceptibility of *Brugia malayi* and *Onchocerca* microfilariae to nitric oxide and hydrogen peroxide in cell-free culture and from IFN gamma-activated macrophages. *Parasitology*. 1996; 112 (Pt 3):315–22. Epub 1996/03/01. <https://doi.org/10.1017/s0031182000065835> PMID: 8728995.

58. Thomas GR, McCrossan M, Selkirk ME. Cytostatic and cytotoxic effects of activated macrophages and nitric oxide donors on *Brugia malayi*. *Infect Immun*. 1997; 65(7):2732–9. Epub 1997/07/01. <https://doi.org/10.1128/iai.65.7.2732-2739.1997> PMID: 9199443; PubMed Central PMCID: PMC175385.
59. Foray V, Pérez-Jiménez MM, Fattouh N, Landmann F. Wolbachia Control Stem Cell Behavior and Stimulate Germline Proliferation in Filarial Nematodes. *Dev Cell*. 2018; 45(2):198–211.e3. Epub 2018/04/25. <https://doi.org/10.1016/j.devcel.2018.03.017> PMID: 29689195.
60. Landmann F, Voronin D, Sullivan W, Taylor MJ. Anti-filarial Activity of Antibiotic Therapy Is Due to Extensive Apoptosis after Wolbachia Depletion from Filarial Nematodes. *PLOS Pathogens*. 2011; 7(11):e1002351. <https://doi.org/10.1371/journal.ppat.1002351> PMID: 22072969
61. Hübner MP, Koschel M, Struever D, Nikolov V, Frohberger SJ, Ehrens A, et al. In vivo kinetics of Wolbachia depletion by ABBV-4083 in *L. sigmodontis* adult worms and microfilariae. *PLoS Negl Trop Dis*. 2019; 13(8):e0007636. <https://doi.org/10.1371/journal.pntd.0007636> PMID: 31381563
62. Fischer C, Ibricu Urriza I, Bulman CA, Lim KC, Gut J, Lachau-Durand S, et al. Efficacy of subcutaneous doses and a new oral amorphous solid dispersion formulation of flubendazole on male jirds (*Meriones unguiculatus*) infected with the filarial nematode *Brugia pahangi*. *PLoS Negl Trop Dis*. 2019; 13(1):e0006787. <https://doi.org/10.1371/journal.pntd.0006787> PMID: 30650084
63. O'Neill M, Mansour A, DiCosty U, Geary J, Dzimiński M, McCall SD, et al. An In Vitro/In Vivo Model to Analyze the Effects of Flubendazole Exposure on Adult Female *Brugia malayi*. *PLoS Negl Trop Dis*. 2016; 10(5):e0004698. <https://doi.org/10.1371/journal.pntd.0004698> PMID: 27145083
64. O'Neill M, Geary JF, Agnew DW, Mackenzie CD, Geary TG. In vitro flubendazole-induced damage to vital tissues in adult females of the filarial nematode *Brugia malayi*. *International journal for parasitology Drugs and drug resistance*. 2015; 5(3):135–40. Epub 2015/08/20. <https://doi.org/10.1016/j.ijpddr.2015.06.002> PMID: 26288741; PubMed Central PMCID: PMC4534755.
65. Partridge FA, Bataille CJR, Forman R, Marriott AE, Forde-Thomas J, Häberli C, et al. Structural Requirements for Dihydrobenzoxazepinone Anthelmintics: Actions against Medically Important and Model Parasites: *Trichuris muris*, *Brugia malayi*, *Heligmosomoides polygyrus*, and *Schistosoma mansoni*. *ACS Infectious Diseases*. 2021; 7(5):1260–74. <https://doi.org/10.1021/acsinfecdis.1c00025> PMID: 33797218