





**Please cite the Published Version**

Scremin, Jessica, Joviano dos Santos, Isabella V, Hughes, Jack P, Garcia-Miranda Ferrari, Alejandro , Valderrama, Enrique, Zheng, Wei, Zhong, Xizhou, Zhao, Xin, Sartori, Elen JR, Crapnell, Robert D , Rowley-Neale, Samuel J  and Banks, Craig E  (2020) Platinum nanoparticle decorated vertically aligned graphene screen-printed electrodes: electrochemical characterisation and exploration towards the hydrogen evolution reaction. *Nanoscale*, 12 (35). pp. 18214-18224. ISSN 2040-3364

**DOI:** <https://doi.org/10.1039/d0nr04336b>

**Publisher:** Royal Society of Chemistry (RSC)

**Version:** Published Version

**Downloaded from:** <https://e-space.mmu.ac.uk/626406/>

**Usage rights:**  [Creative Commons: Attribution-Noncommercial 3.0](https://creativecommons.org/licenses/by-nc/3.0/)

**Additional Information:** This is an Open Access article published in *Nanoscale*, by Royal Society of Chemistry, copyright The Author(s).

**Enquiries:**

If you have questions about this document, contact [openresearch@mmu.ac.uk](mailto:openresearch@mmu.ac.uk). Please include the URL of the record in e-space. If you believe that your, or a third party's rights have been compromised through this document please see our Take Down policy (available from <https://www.mmu.ac.uk/library/using-the-library/policies-and-guidelines>)



Cite this: DOI: 10.1039/d0nr04336b

# Platinum nanoparticle decorated vertically aligned graphene screen-printed electrodes: electrochemical characterisation and exploration towards the hydrogen evolution reaction†

Jessica Scremin,<sup>a,b</sup> Isabella V. Joviano dos Santos,<sup>a,c</sup> Jack P. Hughes,<sup>a,c</sup> Alejandro García-Miranda Ferrari,<sup>id a,c</sup> Enrique Valderrama,<sup>id d</sup> Wei Zheng,<sup>id d,e</sup> Xizhou Zhong,<sup>e</sup> Xin Zhao,<sup>d,e</sup> Elen J. R. Sartori,<sup>id b</sup> Robert D. Crapnell,<sup>id a,c</sup> Samuel J. Rowley-Neale<sup>id \*a,c</sup> and Craig E. Banks<sup>id \*a,c</sup>

We present the fabrication of platinum (Pt<sup>0</sup>) nanoparticle (ca. 3 nm average diameter) decorated vertically aligned graphene (VG) screen-printed electrodes (Pt/VG-SPE) and explore their physicochemical characteristics and electrocatalytic activity towards the hydrogen evolution reaction (HER) in acidic media (0.5 M H<sub>2</sub>SO<sub>4</sub>). The Pt/VG-SPEs exhibit remarkable HER activity with an overpotential (recorded at −10 mA cm<sup>−2</sup>) and Tafel value of 47 mV (vs. RHE) and 27 mV dec<sup>−1</sup>. These values demonstrate the Pt/VG-SPEs as significantly more electrocatalytic than a bare/unmodified VG-SPE (789 mV (vs. RHE) and 97 mV dec<sup>−1</sup>). The uniform coverage of Pt<sup>0</sup> nanoparticles (ca. 3 nm) upon the VG-SPE support results in a low loading of Pt<sup>0</sup> nanoparticles (ca. 4 µg cm<sup>−2</sup>), yet yields comparable HER activity to optimal Pt based catalysts reported in the literature, with the advantages of being comparatively cheap, highly reproducible and tailorable platforms for HER catalysis. In order to test any potential dissolution of Pt<sup>0</sup> from the Pt/VG-SPE surface, which is a key consideration for any HER catalyst, we additively manufactured (AM) a bespoke electrochemical flow cell that allowed for the electrolyte to be collected at regular intervals and analysed *via* inductively coupled plasma optical emission spectroscopy (ICP-OES). The AM electrochemical cell can be rapidly tailored to a plethora of geometries making it compatible with any size/shape of electrochemical platform. This work presents a novel and highly competitive HER platform and a novel AM technique for exploring the extent of Pt<sup>0</sup> nanoparticle dissolution upon the electrode surface, making it an essential study for those seeking to test the stability/catalyst discharge of their given electrochemical platforms.

Received 7th June 2020,  
Accepted 12th August 2020  
DOI: 10.1039/d0nr04336b  
rsc.li/nanoscale

## 1. Introduction

In order to support a paradigm shift within the world's energy economy away from fossil fuels (FF) to less polluting renewable

sources, sustainable energy vectors must be developed to store and transport the energy generated from renewable sources.<sup>1</sup> Green hydrogen is potentially one such vector due to its high energy density (140 MJ kg<sup>−1</sup>), which exceeds that of coal (24 MJ kg<sup>−1</sup>) and petrol (44 MJ kg<sup>−1</sup>).<sup>2</sup> Currently a limiting factor to the ubiquitous use of green hydrogen is the cost of its production, which as of this report, is £11.40 per kg (ref. 3) compared to 1 gallon of diesel which is £4.47.<sup>4</sup> (*in automotive applications these are equivalent quantities*).<sup>5,6</sup> Therefore, if green hydrogen is to become a viable energy vector the cost of its production has to be significantly decreased. Water splitting within an electrolyser, when its required energy is being drawn from renewable sources, wind, wave, *etc.*, is a promising method of generating green hydrogen gas, as it has no associated carbon emissions (CO, CO<sub>2</sub> or CH<sub>4</sub>).<sup>7,8</sup> Hydrogen is produced on the cathode of an electrolyser device *via* the Hydrogen Evolution Reaction (HER): 2H<sup>+</sup> + 2e<sup>−</sup> → H<sub>2</sub>.<sup>9,10</sup>

<sup>a</sup>Faculty of Science and Engineering, Manchester Metropolitan University, Chester Street, Manchester M1 5GD, UK. E-mail: S.rowley-neale@mmu.ac.uk, c.banks@mmu.ac.uk; Fax: +(0)1612476831; Tel: +(0)1612474622, +(0)1612471196

<sup>b</sup>Departamento de Química, Centro de Ciências Exatas, Universidade Estadual de Londrina, CEP 86057-970, Londrina, PR, Brazil

<sup>c</sup>Manchester Fuel Cell Innovation Centre, Manchester Metropolitan University, Chester Street, Manchester M1 5GD, UK

<sup>d</sup>William and Mary Research Institute, The College of William and Mary, Jamestown Street, Williamsburg, Virginia 23187, USA

<sup>e</sup>Shenzhen Yick Xin Technology Development Ltd Co., Fl. 5, Block B, Boton Technology Park, Chaguang Road, Nanshan District, Shenzhen, 518055, China

†Electronic supplementary information (ESI) available. See DOI: 10.1039/d0nr04336b



Currently, Platinum (Pt) based materials are utilised to catalyse the HER as Pt has a near zero  $H^+$  binding energy, which results in the HER having a negligible overpotential.<sup>11–13</sup> The most common commercially available HER catalyst is Pt, with a 20–40% mass loading, on graphitised carbon (Pt/C).<sup>14</sup> Pt is a precious metal in high demand with relatively low earth abundance, which results in it having a very high cost.<sup>15</sup> Consequently, current research is focused on improving/maintaining the catalytic efficiency exhibited by Pt/C whilst lowering the content of Pt. See ESI Table 1† that contains numerous studies that utilise Pt based catalysts towards the HER.<sup>16–19</sup> For example, Devadas *et al.*<sup>20</sup> loaded Pt nanoparticles (PtNPs) upon carbon nanotubes (CNTs) by chemical linkage to achieve a loading of 1.03 wt%. The CNT/PtNPs exhibited a low HER onset potential of  $-16$  mV (vs. RHE), which is comparable to the HER onset potential exhibited by Pt/C, with a 40 wt% Pt content, of 0 mV (vs. RHE). Anchoring PtNPs to chemically resistive supports, such as carbon nanotubes or graphene has been reported to prevent agglomeration and electrical disconnection of the catalyst material.<sup>21</sup> Additionally, corrosion resistance of Pt based catalysts is enhanced by strong surface interactions between PtNP's and a chemically resistive support, which also prevents migration of energetically unstable Pt nanoparticles.<sup>14,22</sup>

Vertically aligned graphene (VG) has been reported within the literature as a high performing support material due to its high conductivity, large surface area and good chemical stability.<sup>23–25</sup> A single graphene sheet consists of 2D-hexagonally arranged carbon atoms. The vertical orientation of these 2D graphene sheets beneficially alters the morphology by reducing agglomeration and increasing the number of inter-sheet open channels and exposed active edge sites.<sup>10</sup> One study that utilises VG as a surface to disperse Pt nanoparticles is by Zhang *et al.*<sup>26</sup> who supported 3D-VG nanosheet arrays on carbon cloth (CC). The Pt-VGNAs/CC, synthesised by a microwave plasma-enhanced chemical vapour deposition (CVD) method, were explored towards the HER. The Pt-VGNAs/CC were shown to exhibit an overpotential of 60 mV (vs. RHE) at  $-10$  mA  $cm^{-2}$ , which is superior to that of commercial Pt/C, where the observed over potential at  $-10$  mA  $cm^{-2}$  was 85 mV (vs. RHE). It is important to note that the respective Pt loadings of the Pt-VGNAs/CC and commercial 20% Pt/C were 41.92 and 44.00  $\mu g$   $cm^{-2}$ . The superior HER catalysis of the Pt-VGNAs/CC is a result of short ion diffusion pathways and fast heterogeneous electron transfer (HET) upon thin Pt nanoplates, coupled with highly conductive VG. Literature has shown that the immobilisation of PtNP's upon a VG platform results in a highly electrocatalytic electrode. However, if the application of this catalyst is to become scalable within commercial electrolyzers, the loading of the PtNPs must be reduced and an efficient, reliable and tailorable technique has to be employed to incorporate the material into the cathodic catalyst layer. Given the above, this work will describe a unique methodology for depositing a minimal amount of Pt onto a VG substrate, and the subsequent incorporation of the Pt/VG into the bulk of screen-printed electrodes (Pt/VG-SPEs). SPEs

have numerous advantages over traditional carbon electrodes such as being highly reproducible, scalable and easily tailorable, allowing research to be translated from the laboratory to commercial applications.<sup>27–30</sup> ESI Table 1† highlights that the majority of studies use a drop casting technique to modify a GC electrode with electrocatalytic material, which needs to be mechanically polished between each measurement, where the reproducibility is dependent upon the skill of the researcher undertaking the task. In the case of SPEs this step is not required, due to screen printing being a highly reproducible and automated deposition technique. Drop-casting is impractical for the production of commercial catalyst coated membranes, therefore we report a screen printing procedure which is directly transferable to commercial applications, especially where roll-to-roll technologies are employed. The Pt/VG-SPEs produced within this study exhibit excellent HER catalysis, which is derived from the significant distribution of  $Pt^0$  nanoparticles mimicking the response of a macro-polycrystalline Pt electrode, whilst having a comparatively low loading of costly  $Pt^0$ . The Pt/VG-SPEs therefore have the potential to be cheap, highly/mass reproducible and tailorable alternatives to Pt/C as the cathodic material within commercial electrolyzers in order to lower the production costs of green hydrogen.

## 2. Experimental section

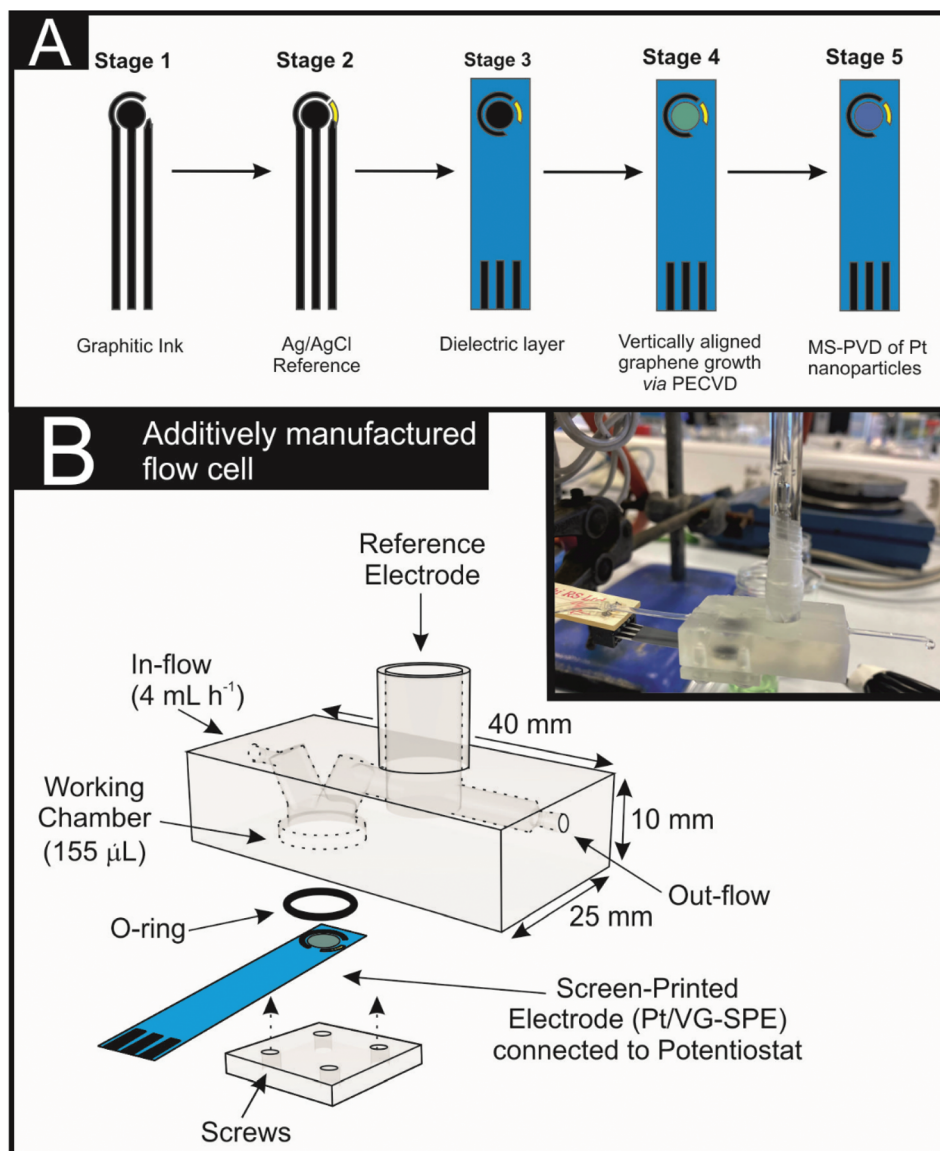
### 2.1. Chemicals and materials

All chemicals (analytical grade or higher) were used as received from Sigma-Aldrich without any further purification. A commercially available catalyst (20% Pt/C) was utilised to benchmark the fabricated VG-SPE variants. Note that the Pt nanoparticles reported within the commercial Pt/C catalyst are  $>5$  nm in diameter.<sup>31</sup> A high purity  $Pt^0$  Magnetron target ( $>99.99\%$ ) was utilised in the production of the  $Pt^0$  nanoparticles found on the Pt/VG-SPEs. Solutions were prepared with deionised water of resistivity not less than 18.2 M $\Omega$  cm and were vigorously degassed prior to electrochemical measurements with high purity, oxygen free nitrogen.<sup>32,33</sup> Measurements were performed in 0.5 M  $H_2SO_4$  and the sulfuric acid solution utilised was of the highest possible grade available from Sigma-Aldrich (99.999%, double distilled for trace metal analysis).

### 2.2. Design and fabrication of the vertically aligned graphene screen-printed electrodes (VG-SPEs) and Pt nanoparticle doped VG-SPEs (Pt/VG-SPEs)

The fabrication of the Pt/VG-SPEs is summarised in Fig. 1(A). First the SPE strip, Ag/AgCl reference and dielectric layer were produced using a bespoke conductive graphitic ink and an automated screen-printing technique previously described<sup>34</sup> (summarized in stage 1, 2 and 3). Note that the addition of the Ag/AgCl has been included to highlight the versatility of the SPEs as self-contained mobile electrochemical platforms however, an external saturated calomel electrode (SCE) reference was utilised within this study. Stage 4 of the Pt/VG-SPE





**Fig. 1** (A) Illustration showing an overview of the fabrication steps required to produce the Pt/VG-SPEs. (B) Diagram of the additively manufactured electrochemical flow cell; the inset shows the actual flow cell utilised.

fabrication involved a radio frequency (RF) plasma enhanced chemical vapour deposition (PECVD) technique, which was utilised to grow the vertically aligned graphene onto flexible graphite paper of 100  $\mu\text{m}$  thickness. This involved inducing an RF electromagnetic wave (1000–2000 W) *via* a quartz portal into a vacuum chamber, the heated (600 to 900  $^{\circ}\text{C}$ , controlled *via* a thermocouple) sample stage was located *ca.* 2 cm from the quartz portal. Methane (with a flow rate of 5–10 SCCM) was utilised as a carbon source, varying from 5 to 100% against a  $\text{H}_2$  gas atmosphere. Note the pressure of the chamber was kept at between 6 to 12 Pa. A growth time of 20 min was utilised.<sup>35</sup> The VG can be observed in Fig. 2. The final stage of the Pt/VG-SPE production (stage 5) was the decoration of the VG-SPE with  $\text{Pt}^0$  nanoparticles that were grown on the VG nanosheets *via* a conventional DC magnetron sput-

tering physical vapour deposition process, *a.k.a.* MS-PVD. The PVD process used a standard industry plasma source for sputtering, which has a 6-inch-diameter sputtering target made of a high purity  $\text{Pt}^0$  foil material. Using a deposition rate calculation of the  $\text{Pt}^0$  magnetron target it was possible to calculate the average weight loading of  $\text{Pt}^0$  on the Pt/VG-SPEs surface, which was determined to be *ca.* 4  $\mu\text{g cm}^{-2}$  with the  $\text{Pt}^0$  nanoparticles having a diameter of *ca.* 3 nm. The defined (geometric) working area of the Pt/VG-SPE was designed to be 0.0314  $\text{cm}^2$  for the Pt/VG-SPEs, this can be easily tailored from  $\mu\text{m}$  to m in order to suite a particular application. The use of SPEs in order to optimise the deposition of the Pt/VG is essential as they are mass-producible and can be easily scaled to commercial applications, which is not possible using glassy carbon electrodes, typically utilised within the literature.





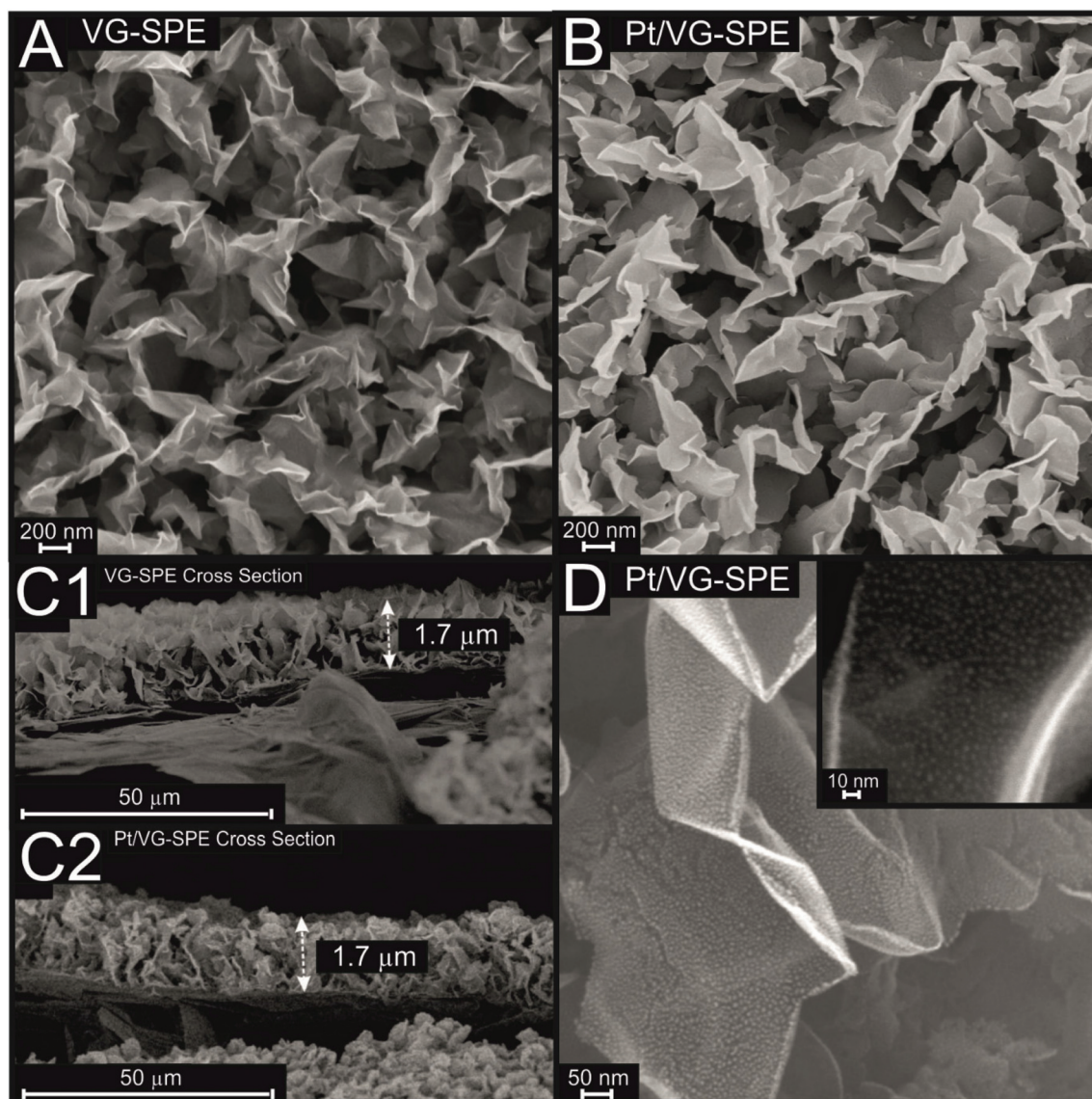


Fig. 2 Scanning Electron Microscope (SEM) images from the top and cross-section images of the VG-SPEs (A and C1) and Pt/VG-SPEs (B, C2 and D), respectively.

### 2.3. Electrochemical measurements

Cyclic voltammetry (CV) and linear sweep voltammetry (LSV) measurements were carried out using an AUTOLAB PGSTAT101 driven by NOVA 2.0 software. The VG-SPE variants acted as working electrodes whilst an external saturated calomel electrode (SCE) reference was utilized rather than the onboard pseudo Ag/AgCl. This allows for a direct comparison between the data collected within this study and other studies within the literature. The inclusion of an onboard pseudo Ag/AgCl is beneficial for non-lab based applications where the use of a larger/more expensive/fragile reference is inappropriate; however during this study its use was not necessary. A large area graphitic SPE acted as the counter electrode. Note that the obtained potential values have been converted to a reversible hydrogen

electrode ( $E_{\text{RHE}} = E_{\text{SCE}} + 0.059 \text{ pH} + 0.242$ ), using a measured pH of 0.3 for the 0.5 M  $\text{H}_2\text{SO}_4$ . The electroactive areas of the Pt/VG-SPEs and VG-SPEs were calculated using the *quasi-reversible* Randles–Ševčík equation and cyclic voltammetry (CV).<sup>36</sup> The scan rates utilized for the CV were (5, 10, 15, 25, 50, 75, 100, 150, 250, and 350  $\text{mV s}^{-1}$ ) and the final area values were determined from an average of ( $N = 5$ ). The CVs pertaining to the commercially procured 20% Pt/C used the same reference and counter as described above, whilst the working electrode was a classical glassy carbon electrode (GCE) drop-cast with  $1 \mu\text{g cm}^{-2}$  of the Pt/C. The HER onset is determined as the potential at which the observed current density deviates from the background current density by the value of  $25 \mu\text{A cm}^{-2}$ .<sup>37</sup>

Electrochemical impedance spectroscopy (EIS) of the VG-SPEs and Pt/VG-SPEs was performed in 0.5 M  $\text{H}_2\text{SO}_4$  under



their respective HER voltages. ESI Fig. S1† shows the Nyquist's plot for both VG-SPEs and Pt/VG-SPEs. As can be seen, the series resistance ( $R_s$ ) for VG-SPE and Pt/VG-SPE is 12.7 and 9.13  $\Omega$ , respectively. After the introduction of Pt on the VG surface, a reduction in the series resistance can be observed which indicates that Pt facilitates the electron transport process. Also, in the case of the Pt/VG-SPE the formation of two semi-circles is observed, which confirms the presence of two phases in the system (Pt and VG-SPE).

## 2.4. Surface characterisation

The morphologies of VG-SPE variants were analyzed by scanning electron microscope (SEM) using a Zeiss SUPRA 40 (Carl Zeiss Ltd, Germany). Composition of the electrodes were investigated by energy dispersive X-rays spectroscopy (EDS) using an Apollo 40 SDD (EDAX Inc., USA), coupled to the SEM. Raman spectra were recorded using a Renishaw inVia Raman microscope spectrometer (Renishaw PLC, UK) equipped with an argon laser ( $\lambda = 514.3$  nm). Atomic force microscopy (AFM) measurement was obtained using a HQ:NSC19/Al BS silicon tip back coated with aluminium (Mikromasch, France) connected to a Smart SPM1000 coupled to an XploRa PLUS V1.2 (using Omegascope AIST-NT v3.5 and LabSepc 6, respectively; Horiba, France) and a vibration isolation table, all carried out using AC mode. Samples were attached to magnetic disks using double-sided tape. High-resolution transmission electron microscopy (HRTEM) images were collected using a JEM-2100 coupled with a OI Aztec 80 mm X-max EDS detector. The X-ray photoelectron spectroscopy (XPS) data was acquired using an AXIS Supra (Kratos, UK), equipped with an Al X-ray source (1486.6 eV) operating at 300 W in order to perform survey scans and 450 W for narrow scans. All X-rays were mono-chromated using a 500 mm Rowland circle quartz crystal X-ray mirror. The angle between X-ray source and analyser was  $54.7^\circ$  with an electron energy analyser: 165 mm mean radius hemispherical sector analyser operating in fixed analyser transmission mode, pass energy 160 eV for survey scans and 40 eV narrow scans. A detector with a delay line detector with multichannel plate was utilised.

## 2.5. Additive manufactured (AM) scanning flow cell

The electrochemical scanning flow cell (see Fig. 1(B)) was designed to have a main working electrode chamber that has a diameter of 9.5 mm. This was sealed with an o-ring (RS Components, UK) and AM base plate using 5 mm M3 Pan Head screws (RS Components, UK). The channels to and from the working electrode were positioned at  $60^\circ$  from each other.<sup>38</sup> An external reference electrode was located downstream from the working electrode in a 7.6 mm inlet, sealed with Parafilm (Sigma, UK) as common within the literature. The inlets and outlets to the cell were fitted with 0.79 mm inner diameter Tygon® tubing (Cole Palmer, US), that could connect to the syringe and collector, respectively.

The flow cell STL files were designed using Fusion 360 (Autodesk, USA) and converted into build files using PreForm (FormLabs, USA). The designs were produced on a FORM 2

stereolithography 3D-Printer (FormLabs, USA) using FORM 2 Clear Resin (GPCLO4). The flow cells were post-processed by washing with isopropanol and the rough edges removed with Wetordry paper (P2000). Post-curing was performed at 60  $^\circ\text{C}$  for 10 min using a FormLabs FORM Cure (405 nm, FormLabs, USA).

## 2.6. ICP-OES measurements using the bespoke additive manufactured (AM) scanning flow cell

The electrolyte was fully degassed with high purity, oxygen free nitrogen prior to use. This was then injected into the electrochemical scanning flow cell at a constant rate of 4 mL  $\text{h}^{-1}$  using an IPS-12 syringe pump (Inovenso Technology Ltd, Turkey) during the course of the electrochemical stability measurements, in order to collect solution quantities large enough for inductively coupled plasma optical emission spectroscopy (ICP-OES) analysis. ICP-OES data was acquired using a Thermo Scientific iCAP6300 Duo in axial mode, where the wavelength and order for Pt are 214.42 and 457, respectively. A 1000 mg  $\text{L}^{-1}$  Pt (in HCl) ICP standard was used for benchmarking.<sup>39</sup> It should be noted that this technique can be easily performed using the SPE variants developed within this study given their size and geometry, where traditional carbon electrodes would be limited.

# 3. Results and discussion

## 3.1. Physicochemical characterisation

A thorough physicochemical characterisation of the VG-SPE and Pt/VG-SPEs was performed in order to determine their quality, purity and uniformity of the electrodes surface. This involved using Energy-dispersive X-ray spectroscopy (EDS), Raman spectroscopy, Scanning Electron Microscopy (SEM), Atomic Force Microscopy (AFM) and high-resolution Transmission Electron Microscopy (HR-TEM).

Raman characterisation of the VG-SPE and Pt/VG-SPEs was performed, with the obtained spectra being given in ESI Fig. S2,† where the ratios, intensities and full width half-maximum (FWHM) values are provided in Table 1. The Raman spectra of the graphene electrodes confirms the characteristic D (*ca.* 1380  $\text{cm}^{-1}$ ), G (*ca.* 1582  $\text{cm}^{-1}$ ), 2D (*ca.* 2706  $\text{cm}^{-1}$ ) and D + D' (*ca.* 2954  $\text{cm}^{-1}$ ) bands to be consistent with that of vertical aligned graphene.<sup>40,41</sup> Graphene's D band is usually referred to disorder/defects in the lattice, the G band is linked to graphitic structures and the 2D band is related to stacking order of the graphene layers.<sup>42</sup> In vertically aligned graphene, it is expected to have a prominent D band due to defects and/or the vertical orientation of the graphene presented herein.<sup>43</sup> The respective Raman fingerprints of the graphene samples reveals that the intensity ratio D/G ( $I_D/I_G$ ) are 0.86 and 1.23 for VG- and Pt-VG-SPE, respectively. The results indicate a higher presence of defects/edges/in-plane stretching in the graphene framework in the Pt-doped sample,<sup>44–46</sup> likely due to the high presence of edges and the destruction of the graphene sheets by the Pt.<sup>47</sup> The ratio of  $I_{2D}/I_G$  is also changed from 0.92 to



**Table 1** Full width at half-maximum (FWHM) data, intensity of the Raman bands and peak ratios calculated from Raman spectroscopy of the VG-SPE variants

Sample				FWHM cm <sup>-1</sup>			Peak ratio		
	D	G	2D	I <sub>D</sub>	I <sub>G</sub>	I <sub>2D</sub>	I <sub>D</sub> /I <sub>G</sub>	I <sub>2D</sub> /I <sub>G</sub>	I <sub>D</sub> /I <sub>2D</sub>
VG-SPE	37.82	27.62	60.69	12 682	14 756	13 673	0.86	0.92	0.93
PT/VG-SPE	63.30	45.40	120.30	9800	7961	5530	1.23	0.69	1.77

0.69 when the VG-SPE is doped with Pt<sup>0</sup>. The  $I_{2D}/I_G$  for the VG-SPE sample indicates that the graphene is few-layer graphene,<sup>48</sup> as expected due to having vertical graphene in this sample. The increase in the  $I_{2D}/I_G$  ratio, could indicate an increase in the number of layers, or could be due to the intercalation/doping with Pt<sup>0</sup>.<sup>48</sup> Ratio of D and D' peaks has been reported to help distinguishing the nature of the defects in graphene (sp<sup>3</sup>, vacancy-like or graphite boundaries),<sup>49</sup> however in VG-SPE samples the  $I_{D'}$  could not be calculated due to the proximity of D' and G bands (as shown in ESI Fig. S2†). FWHM data of 2D peaks (Table 1) is 60.69 and 120.3  $\text{cm}^{-1}$  for the VG and Pt/VG-SPE, respectively. 60.69  $\text{cm}^{-1}$  for VG-SPE's FWHM confirms the few-layer-like structure/vertical orientation of the graphene, and an increase, since the only difference is the addition of Pt to the VG-SPE surface, to 120.3  $\text{cm}^{-1}$  is likely due to the Pt<sup>0</sup> doping of the sample.<sup>48</sup> However, it is important to note that the use of FWHM for the estimation the number of layers in graphene has been said to be valid only for AB-stacked few layer graphene.<sup>48,50</sup> Next, Raman mapping characterisation of the batches was performed in order to explore the homogeneity of the sample's surface, with the results shown in ESI Fig. S2C and S2D† for VG-SPE and Pt/VG-SPE, respectively. The Raman maps represent the  $I_D/I_G$  ratios for the samples across their surface, showing similar values at every point for both samples.

Scanning Electron Microscope (SEM) images of the vertical graphene (VG-SPE) and Pt-doped vertical graphene SPEs (Pt/VG-SPE) are presented in Fig. 2, the produced VG has a morphology typical of vertically aligned few-layer graphene.<sup>51,52</sup> It is evident from the cross-section images (Fig. 2(C1) and (C2) for VG-SPE and Pt/VG-SPE, respectively) that the both vertical graphene layers exhibit a height of ca. 1.7  $\mu\text{m}$ , which is similar to other reports of VG within the literature.<sup>53,54</sup> Fig. 2(D) shows that the platinum nanoparticles are uniformly distributed on the surface of the VG edge and basal planes, it can be visually assessed that the particles have an average particle diameter of ca. 3 nm. ESI Fig. S3† shows typical Atomic Force Microscope (AFM) topographic 2D and 3D maps of the Pt/VG-SPE sample. AFM analysis shows that the irregular vertical domains merge at the top of them,<sup>55</sup> not allowing the AFM tip to measure the depth of them; however, they map a rough surface that corresponds with the ones seen *via* SEM (Fig. 2), that covers the entire surface with a network of vertical structures.

High Resolution Transmission Electron Microscope (HRTEM) images of the Pt/VG-SPEs are presented in ESI Fig. S4,† where it can be observed a highly packed uniform dis-

tribution of Pt<sup>0</sup> particles of ca. 3 nm average diameter, which is similar to the ones reported in the literature.<sup>56</sup> The Fourier transforms shown within ESI S4 (D and E)† display cubic and pseudo hexagonal diffraction patterns, which correspond to the 100 and 111 lattice faces.<sup>57</sup> This shows the Pt<sup>0</sup> nanoparticles to have a highly quality crystalline structure. Additionally, EDS analysis shown in ESI Fig. S5† confirms the presence of Pt<sup>0</sup> on the surface of the Pt/VG-SPEs. X-ray photoelectron spectroscopy (XPS) analysis confirmed the Pt<sup>0</sup> decorated vertically aligned graphene to be comprised of high quality graphene sheets and polycrystalline Pt<sup>0</sup> nanoparticles with the obtained spectra being depicted in ESI Fig. S6.† There is a shift in the C 1s peaks for the Pt against the non-decorated sample this is likely due to a fermi-level change caused by newly decorated/doped (*via* MS-PVD) metal(Pt)-graphene.<sup>58</sup> The characteristic peaks associated with metallic Pt<sup>0</sup> (4f) are observed in ESI Fig. S6(A)† from the surface of the Pt/VG-SPE at ca. 70.9 and 67.6 eV.<sup>59</sup> The C 1s carbon regions of the Pt/VG-SPEs and VG-SPEs are given in ESI S6(B and C),† the main peak at ca. 284.64 eV corresponds to C=C sp<sup>2</sup> bonded graphitic structures, and the one ~285.74 eV corresponds to edge plane like-sites/defects related to C-H.<sup>60–62</sup> In addition, peaks related to C–O, C=O and O–C=O bonding are likely to be due to adsorbed impurities.<sup>43</sup>

### 3.2. Electrochemical characterisation

The cyclic voltammetric responses (CVs) of the VG-SPEs and Pt/VG-SPEs were explored using the near ideal outer-sphere redox probe 1 mM [Ru(NH)<sub>6</sub>]<sup>3+</sup>/0.1 M KCl and are shown in ESI Fig. S7.† A plot of peak current verses the square-root of scan rate exhibited a linear response for both the VG-SPEs and Pt/VG-SPEs indicating the electrochemical processes is diffusional in nature. Analysis of the CVs (see ESI Fig. S7†) using the Nicholson's method<sup>63</sup> allows the heterogeneous rate constants,  $k^0$  to be deduced. Both the VG-SPEs and Pt/VG-SPEs display similar  $k^0$  values at  $4.09 \times 10^{-3}$  and  $4.06 \times 10^{-3} \text{ cm s}^{-1}$ , respectively. Note that as the Pt<sup>0</sup> nanoparticles are significantly dispersed across the surface of the VG-SPE, their closeness to each other demonstrates that each Pt<sup>0</sup> nanoparticle is not diffusional independent. Such that significantly diffusional overlap occurs over the timescales of the electrochemical measurements meaning that the CV response is characteristic of linear diffusion with peak shaped responses expected of a Pt macroelectrode even though the overall amount of Pt upon the surface is less than that of a solid Pt macroelectrode. Note in ESI Fig. S7,† the magnitude of the voltammetric peak





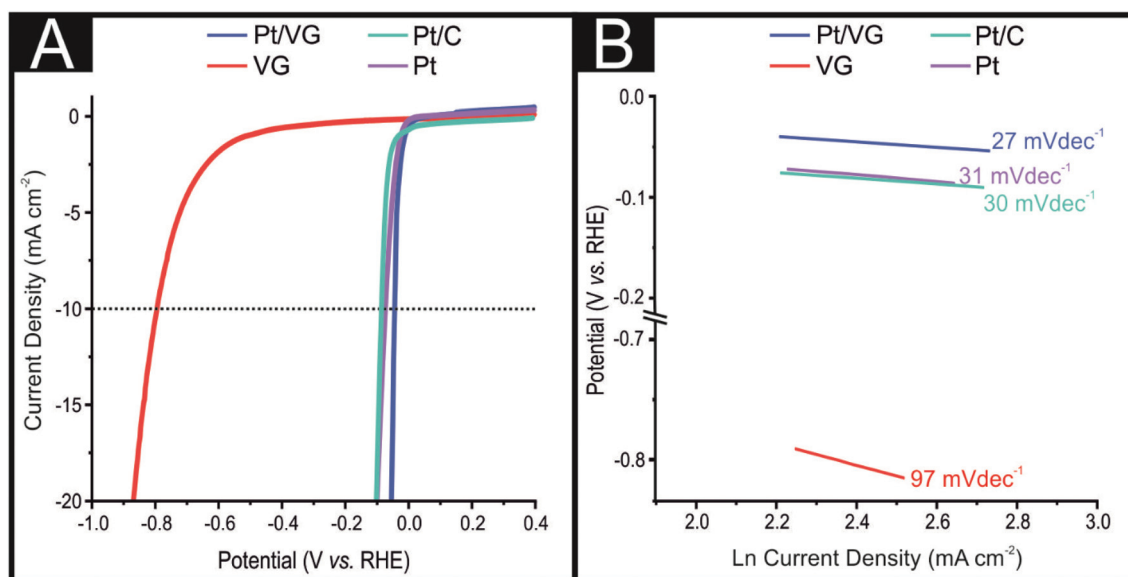
heights of the Pt/VG-SPEs over that of the VG-SPEs, which is as expected given the increase in the surface area, *e.g.* the coverage of the Pt<sup>0</sup> nanoparticles. The estimated electroactive areas ( $A_{\text{real}}$ ) for VG-SPEs and Pt/VG-SPEs using the *quasi*-reversible Randles–Ševčík equation,<sup>64</sup> are found to correspond to 0.077 and 0.109 cm<sup>2</sup>, respectively, which are significantly larger than the physical geometric ( $A_{\text{geo}}$ ) working area (0.0314 cm<sup>2</sup>) of the screen-printed electrodes, which is as expected. For comparison, the  $A_{\text{real}}$  and  $A_{\text{geo}}$  for the Pt/C was calculated to be 0.055 and 0.071 cm<sup>2</sup> respectively. The electroactive area ( $A_{\text{real}}$ ) of the Pt/VG-SPEs was determined more accurately using the hydrogen adsorption methodology described by Rodríguez *et al.*<sup>65</sup> The obtained electroactive area for the Pt/VG-SPE using this method was determined to be 0.096 cm<sup>2</sup>, which closely matches the electroactive areas obtained from the analysis of the CVs using the *quasi*-reversible Randles–Ševčík equation (see above). Note that the current densities given within this manuscript have been normalised against the geometric area of the electrodes used to derive them.

### 3.3. Application of the VG-SPEs and Pt/VG-SPEs towards the hydrogen evolution reaction (HER)

Next, the electrochemical characterisation of the VG-SPE and Pt/VG-SPEs was explored towards the HER using linear sweep voltammetry (LSV) in 0.5 M H<sub>2</sub>SO<sub>4</sub>. Firstly, it was important to benchmark the HER activity of a polycrystalline solid Pt electrode and 20% Pt/C in order for an accurate comparison between the VG-SPEs and Pt/VG-SPEs (see Fig. 3). As expected the polycrystalline Pt electrode and the Pt/C displayed highly efficient HER catalysis with HER over potentials (recorded at −10 mA cm<sup>−2</sup>) of 73 mV (*vs.* RHE) and 84 mV (*vs.* RHE), respectively. Next, the VG-SPE and Pt/VG-SPEs were explored

towards the HER with the obtained LSVs displayed in Fig. 3. The VG-SPE exhibited a large overpotential at 789 mV (*vs.* RHE) that is significantly more electronegative than the polycrystalline Pt electrode or Pt/C (see Fig. 3A), which is characteristic of unmodified carbon based electrode materials.<sup>27</sup> The Pt/VG-SPE outperforms the polycrystalline Pt electrode and the Pt/C, in regards to their HER overpotential with a value of 47 mV (*vs.* RHE). Note that the Pt/VG-SPEs on a Pt per cm<sup>2</sup> basis have ×10 less Pt, (*ca.* 4 μg cm<sup>−2</sup>) than the typical commercially available 20% Pt/C catalyst (*ca.* 44.00 μg cm<sup>−2</sup>), value reported by Zhang *et al.*<sup>26</sup> This obtained HER overpotential was utilised to gauge the intra-repeatedly of the Pt/VG-SPEs; the relative standard deviation (%RSD) for the Pt/VG-SPEs was found to be 0.9% (*N* = 5). The small %RSD attests to the repeatability of the Pt/VG-SPE production method and reliability of their HER signal output.

In order to determine the rate limiting step of the HER reaction mechanism occurring at each of the explored electrodes, Tafel analysis was performed on the faradaic sections of the LSVs shown in Fig. 3(A) with the obtained Tafel curves being shown in Fig. 3(B).<sup>66</sup> The VG-SPE, Pt/VG-SPE, polycrystalline Pt<sup>0</sup> and Pt/C exhibited Tafel slopes of 97, 27, 31 and 30 mV dec<sup>−1</sup>, respectively. These Tafel values indicate that for the VG-SPE the initial Volmer H<sup>+</sup> adsorption step is the rate-limiting step and for the Pt/VG-SPE, polycrystalline Pt and Pt/C it is the desirable Tafel discharge step that limits the reaction rate. With the Pt/VG-SPEs having *ca.* ×10 lower loading of Pt<sup>0</sup> than the Pt/C and yet exhibiting more beneficial HER catalysis it is clear that the Pt/VG-SPEs have potential to be utilised as the cathodic material within electrolyser devices. The excellent intrinsic HER electrocatalysis exhibited by the Pt/VG-SPE may be further confirmed *via* calculations of hydrogen turnover fre-



**Fig. 3** (A) Typical linear sweep voltammograms (LSVs) showing the HER activity of a polycrystalline platinum macroelectrode, 20% Pt/Vulcan carbon, VG-SPE and Pt/VG-SPE. Solution composition: 0.5 M H<sub>2</sub>SO<sub>4</sub>. Scan rate: 25 mV s<sup>−1</sup>. (B) Tafel slopes corresponding to the Faradaic regions of the LSVs shown in (A).

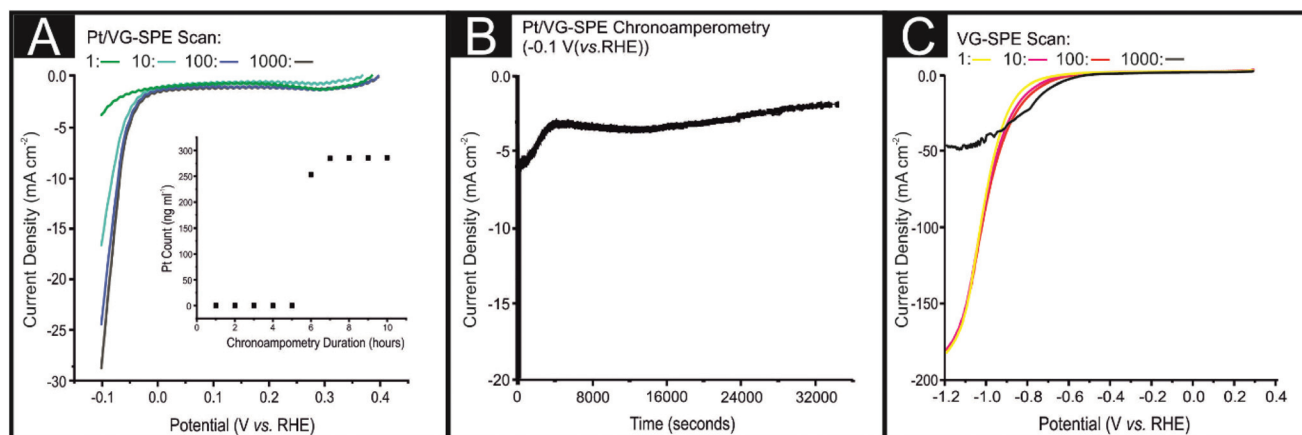




quency (ToF), mass activity (MA) and specific activity (SA), which are displayed in the ESI.† The Pt/VG-SPE exhibited an exceptional ToF value of  $8.77 \text{ s}^{-1}$ , higher than optimal HER catalysts reported in the wider literature.<sup>67–70</sup> The Pt/VG-SPE also exhibited high mass and specific activity values of  $52.31 \text{ A mg}^{-1}$  and  $6.24 \text{ A m}^{-2}$ , respectively, in comparison to other state of the art HER catalysts (in acidic media).<sup>71</sup> The efficient HER activity displayed by the Pt/VG-SPE which is competitive with other Pt based catalysts reported within the literature is likely derived from the Pt<sup>0</sup> nanoparticle deposition technique, which ensures the Pt<sup>0</sup> is located upon the high surface area VG support. This results in a very large surface area of exposed Pt<sup>0</sup> active sites to catalyse the HER, when compared to Pt/C or a macro polycrystalline Pt electrode, thus explaining the marginal increase in HER activity. It is worth noting that this study was performed using a typical three electrode system as is common within the literature, however, future work will seek to deposit the Pt/VG-SPE onto a membrane where the catalyst can be tested within a functional PEM electrolyser.

An important consideration for the applicability of a catalyst as the cathode material within an electrolyser is its stability and durability regarding the HER electrochemical signal output. In order to investigate the stability of the Pt/VG-SPEs HER signal output in an acidic solution, chronoamperometry at  $-0.1 \text{ V}$  (vs. RHE) for 36 000 seconds and 1000 repeat CV scans were carried out (see Fig. 4). The Pt/VG-SPE exhibited a significant decrease in HER activity over the course of 1000 repeat scans, with the observed current decreasing from  $-28.8$  to  $-3.85 \text{ mA cm}^{-2}$  from at  $0.1 \text{ V}$  (vs. RHE) from the 1<sup>st</sup> to the 1000<sup>th</sup> scan. There was also a significant decrease in the Pt/VG-SPEs HER signal output during the chronoamperometry test (see Fig. 4(B)). Fig. 4(B) shows that there was a rapid decrease in observed current density from  $-23.5$  to  $-8.24 \text{ mA cm}^{-2}$  in the initial 355 seconds (magnified in ESI Fig. 8†), after which there was a more gradual decline to  $-5 \text{ mA cm}^{-2}$  at

4275 seconds. The HER signal then remained somewhat stable with only a small decline in HER activity to  $-3.73 \text{ mA cm}^{-2}$  by 36 000 seconds. It is clear from the data presented above that the Pt/VG-SPEs exhibit poor stability in acidic conditions. In order to investigate whether the Pt/VG-SPEs exhibited poor stability due to the discharging of Pt<sup>0</sup> nanoparticles from the surface of the Pt/VG-SPEs, ICP-OES was utilised.<sup>72,73</sup> ICP-OES coupled with electrochemical stability measurements (chronoamperometry for 36 000 seconds at  $-0.1 \text{ V}$  (vs. RHE) whilst the electrolyte ( $0.5 \text{ M H}_2\text{SO}_4$ ) was flowed over the electrodes surface at  $4 \text{ mL h}^{-1}$ ), in order to assess whether the Pt<sup>0</sup> nanoparticles were detaching from the Pt/VG-SPEs surface, and thus causing the observed decrease in HER activity. Fig. 4(A inset) exhibits the rate of Pt<sup>0</sup> detachment ( $\text{ng mL}^{-1} \text{ h}^{-1}$ ) from the surface of the Pt/VG-SPE within  $0.5 \text{ M H}_2\text{SO}_4$  over a 10 h period. It is evident that a minimal quantity of Pt<sup>0</sup> has detached from the Pt/VG-SPE after 5 h, where the concentration of Pt<sup>0</sup> is  $0.01 \text{ ng mL}^{-1}$ . After 6 h the concentration of Pt<sup>0</sup> increases to  $253.32 \text{ ng mL}^{-1}$ , then levels out at ca.  $285 \text{ ng mL}^{-1}$  until 10 h. It is likely that the dramatic increase in Pt<sup>0</sup> concentration within the electrolyte is a result of damage to the structural integrity of the VG support, leading to a degradation of the VG sheets and detachment of the Pt<sup>0</sup> from the VG to the solution. The decoration of the VG with Pt nanoparticles *via* MS-PVD likely leads to weak chemical bonds between the graphene sheets and Pt<sup>0</sup>, which contributes to the observed detachment under these conditions. It has been previously described by Borup *et al.*<sup>74</sup> that Pt<sup>0</sup> dissolution is a factor of particle size with Pt<sup>0</sup> particles that have a diameter less than  $5 \text{ nm}$  having a dissolution rate significantly greater than Pt<sup>0</sup> particles with a diameter greater than  $5 \text{ nm}$  (*i.e.*  $1\text{--}2 \text{ nm}$  particles were observed to have a  $\times 20$  greater dissolution rate than  $5 \text{ nm}$  Pt<sup>0</sup> nanoparticles). Further work is currently underway that is attempting to prevent the Pt dissolution from the VG surface. The degradation of graphene



**Fig. 4** (A) Cyclic stability examination of a Pt/VG-SPE *via* LSV (scan rate:  $100 \text{ mV s}^{-1}$  (vs. RHE)) was performed between the potential range of  $+0.4$  to  $-0.1 \text{ V}$ , repeated for 1000 cycles, inset showing Pt<sup>0</sup> dissolution from a Pt/VG-SPE recorded using ICP-OES. Solution composition:  $0.5 \text{ M H}_2\text{SO}_4$ . (B) shows chronoamperometry using a Pt/VG-SPE for 36 000 seconds, solution composition:  $0.5 \text{ M H}_2\text{SO}_4$ . (C) Cyclic stability examination of a VG-SPE *via* LSV (scan rate:  $100 \text{ mV s}^{-1}$  (vs. RHE)) was performed between the potential range of  $+0.4$  to  $-0.1 \text{ V}$ , repeated for 1000 cycles. Solution composition:  $0.5 \text{ M H}_2\text{SO}_4$ .



sheets as a result of the HER occurring, has been previously reported in pristine horizontal CVD grown graphene.<sup>75</sup> From the above data we deduce that it is likely that the observed decrease in HER activity is due to a combination of Pt<sup>0</sup> dissolution and VG degradation. This is supported by Fig. 4(C) that displays a stability test (1000 repeat CV scans as above) for a VG-SPE. The VG-SPEs' HER signal output remained relatively stable in terms of its achievable current from scan 1 to 100, however from 100 to 1000 there is a drastic decrease from 179.01 mA to 48.22 mA by −1.2 V (vs. RHE). This degradation in HER signal output is likely a result of the VG sheets structurally breaking due to the mechanical force of hydrogen bubbling and electrochemical perturbation, which has been seen in the case of horizontally aligned graphene.<sup>75</sup> This reduces the number of electrical pathways within the VG-SPE with contributions from the weak van der Waals forces of the Pt<sup>0</sup> upon the graphene surface; this likely explains the discharge of the Pt<sup>0</sup> observed using ICP-OES after 5 h of chronoamperometry (see Fig. 4(A)).

## 4. Conclusions

We have explored the electrocatalytic performance of VG-SPEs and Pt/VG-SPEs towards the HER in an acidic electrolyte (0.5 M H<sub>2</sub>SO<sub>4</sub>) and revealed the Pt/VG-SPEs to exhibit remarkable HER activity with a comparatively low loading of Pt<sup>0</sup> per cm<sup>2</sup> (×10 lower than that of 20% commercial Pt/C). The competitive performance of Pt/VG-SPEs can be attributed to the ca. 3 nm Pt<sup>0</sup> nanoparticles that are significantly dispersed upon a high surface area 3D VG support, resulting in maximal exposure of the Pt<sup>0</sup> active sites for HER catalysis. The screen-printing technique utilised within this study more closely mimics the manufacturing techniques implemented in the production of commercial PEM electrolyser membranes when compared to deposition techniques used in wider literature, where drop-casting is typically employed to modify given electrochemical platforms. The Pt/VG-SPEs utilised within this study are easily tailored and cheaply mass manufactured, demonstrating them to be promising cathodic catalyst systems for application within commercial electrolyzers. That is on the proviso that their electrochemical stability in acidic media can be improved in subsequent work. The ICP-OES technique utilised within this study allowed us to accurately measure the extent of Pt<sup>0</sup> nanoparticle dissolution from the electrodes surface. The described technique can be further adapted to measure a plethora of different electrode designs and materials, offering opportunities to benchmark the stability of novel catalyst materials for electrolyzers and other electrochemical devices.

## Conflicts of interest

There are no conflicts to declare.

## Acknowledgements

Funding is also from the Engineering and Physical Sciences Research Council (Reference: EP/P007767/1 and EP/N0011877/1). The Manchester Fuel Cell Innovation Centre is funded by the European Regional Development Fund.

## References

- 1 A. Mohammadi and M. Mehrpooya, *Energy*, 2018, **158**, 632–655.
- 2 G. Thomas, presented in part at the Hydrogen Program Review, Livermore, CA, May, 2000.
- 3 P. E. L. o. b. o. Cadent, *HyMotion - Network-supplied hydrogen unlocks low carbon transport opportunities*, 2019.
- 4 Global Petrol Prices, [https://www.globalpetrolprices.com/United-Kingdom/diesel\\_prices/](https://www.globalpetrolprices.com/United-Kingdom/diesel_prices/) (accessed July 5, 2020).
- 5 O. J. Guerra, J. Eichman, J. Kurtz and B.-M. Hodge, *Joule*, 2019, **3**, 2425–2443.
- 6 A. A. Janovic and R. Haas, *Energy Policy*, 2018, **123**, 280–288.
- 7 D. Xu, L. Dong and J. Ren, in *Hydrogen Economy*, ed. A. Scipioni, A. Manzardo and J. Ren, Academic Press, 2017, pp. 35–54, DOI: 10.1016/B978-0-12-811132-1.00002-X.
- 8 F. M. Sapountzi, J. M. Gracia, C. J. Weststrate, H. O. A. Fredriksson and J. W. Niemantsverdriet, *Prog. Energy Combust. Sci.*, 2017, **58**, 1–35.
- 9 J. Benson, M. Li, S. Wang, P. Wang and P. Papakonstantinou, *ACS Appl. Mater. Interfaces*, 2015, **7**, 14113–14122.
- 10 F. Wang, X. Yang, B. Dong, X. Yu, H. Xue and L. Feng, *Electrochem. Commun.*, 2018, **92**, 33–38.
- 11 M. Liu, Y. Niu, L. Yang, L. Yao, D. Lin, C. Shao, D. Sun, L. Li and C. Wang, *Diamond Relat. Mater.*, 2018, **90**, 79–83.
- 12 M. Bernt, A. Siebel and H. A. Gasteiger, *J. Electrochem. Soc.*, 2018, **165**, F305–F314.
- 13 L. Yin, T. Yang, X. Ding, M. He, W. Wei, T. Yu and H. Zhao, *Electrochem. Commun.*, 2018, **94**, 59–63.
- 14 M. Karuppannan, Y. Kim, S. Gok, E. Lee, J. Y. Hwang, J.-H. Jang, Y.-H. Cho, T. Lim, Y.-E. Sung and O. J. Kwon, *Energy Environ. Sci.*, 2019, **12**, 2820–2829.
- 15 M. Wang, L. Jiang, Q. Li and X. Zhou, *Int. J. Hydrogen Energy*, 2019, **44**, 31062–31071.
- 16 X. Shang, Z.-Z. Liu, S.-S. Lu, B. Dong, J.-Q. Chi, J.-F. Qin, X. Liu, Y.-M. Chai and C.-G. Liu, *ACS Appl. Mater. Interfaces*, 2018, **10**, 43561–43569.
- 17 A. H. Ghanim, J. G. Koonce, B. Hasa, A. M. Rassoolkhani, W. Cheng, D. W. Peate, J. Lee and S. Mubeen, *Front. Chem.*, 2018, **6**, 523.
- 18 Z. Jiang, J. Ren, Y. Li, X. Zhang, P. Zhang, J. Huang, C. Du and J. Chen, *Dalton Trans.*, 2019, **48**, 8920–8930.
- 19 S. H. Ahn, S. J. Yoo, H.-J. Kim, D. Henkensmeier, S. W. Nam, S.-K. Kim and J. H. Jang, *Appl. Catal., B*, 2016, **180**, 674–679.
- 20 B. Devadas and T. Imae, *Electrochem. Commun.*, 2016, **72**, 135–139.



- 21 Y. Shao, S. Zhang, C. Wang, Z. Nie, J. Liu, Y. Wang and Y. Lin, *J. Power Sources*, 2010, **195**, 4600–4605.
- 22 S. Sun, G. Zhang, D. Geng, Y. Chen, R. Li, M. Cai and X. Sun, *Angew. Chem., Int. Ed.*, 2011, **50**, 422–426.
- 23 K. Muralova, R. Zahradnický and J. Bednar, *Diamond Relat. Mater.*, 2019, **97**, 107439.
- 24 J. Zhan, S. Deng, Y. Zhong, Y. Wang, X. Wang, Y. Yu, X. Xia and J. Tu, *Nano Energy*, 2018, **44**, 265–271.
- 25 Z. Zhang, W. Li, M. F. Yuen, T.-W. Ng, Y. Tang, C.-S. Lee, X. Chen and W. Zhang, *Nano Energy*, 2015, **18**, 196–204.
- 26 H. Zhang, W. Ren, C. Guan and C. Cheng, *J. Mater. Chem. A*, 2017, **5**, 22004–22011.
- 27 S. J. Rowley-Neale, D. A. C. Brownson, G. C. Smith, D. A. G. Sawtell, P. J. Kelly and C. E. Banks, *Nanoscale*, 2015, **7**, 18152–18168.
- 28 S. J. Rowley-Neale, M. Ratova, L. T. N. Fugita, G. C. Smith, A. Gaffar, J. Kulczyk-Malecka, P. J. Kelly and C. E. Banks, *ACS Omega*, 2018, **3**, 7235–7242.
- 29 S. J. Rowley-Neale, C. W. Foster, G. C. Smith, D. A. C. Brownson and C. E. Banks, *Sustainable Energy Fuels*, 2017, **1**, 74–83.
- 30 S. J. Rowley-Neale, D. A. C. Brownson and C. E. Banks, *Nanoscale*, 2016, **8**, 15241–15251.
- 31 Sigma-Aldrich, <https://www.sigmaaldrich.com/catalog/product/aldrich/738549?lang=en&region=GB>, (accessed 07/01/2019).
- 32 A. B. Laursen, A. S. Varela, F. Dionigi, H. Fanchiu, C. Miller, O. L. Trinhammer, J. Rossmeisl and S. Dahl, *J. Chem. Educ.*, 2012, **89**, 1595–1599.
- 33 D. Marin, F. Medicuti and C. Teijeiro, *J. Chem. Educ.*, 1994, **71**, A277.
- 34 S. J. Rowley-Neale, G. C. Smith and C. E. Banks, *ACS Appl. Mater. Interfaces*, 2017, **9**, 22539–22548.
- 35 J. Wang, M. Zhu, R. A. Outlaw, X. Zhao, D. M. Manos and B. C. Holloway, *Carbon*, 2004, **42**, 2867–2872.
- 36 A. G.-M. Ferrari, C. W. Foster, P. Kelly, D. A. C. Brownson and C. E. Banks, *Biosensors*, 2018, **8**, 53.
- 37 L. Cheng, W. Huang, Q. Gong, C. Liu, Z. Liu, Y. Li and H. Dai, *Angew. Chem., Int. Ed.*, 2014, **53**, 7860–7863.
- 38 S. O. Klemm, A. Karschin, A. K. Schuppert, A. A. Topalov, A. M. Mingers, I. Katsounaros and K. J. J. Mayrhofer, *J. Electroanal. Chem.*, 2012, **677**, 50–55.
- 39 Sigma-Aldrich, [https://www.sigmaaldrich.com/catalog/product/sial/19078?lang=en&region=GB&cm\\_sp=Insite-\\_-caContent\\_prodMerch\\_cooccurrenceModel-\\_-prodMerch10-1](https://www.sigmaaldrich.com/catalog/product/sial/19078?lang=en&region=GB&cm_sp=Insite-_-caContent_prodMerch_cooccurrenceModel-_-prodMerch10-1), (accessed 20/01/2020).
- 40 A. C. Ferrari, *Solid State Commun.*, 2007, **143**, 47–57.
- 41 D. Graf, F. Molitor, K. Ensslin, C. Stampfer, A. Jungen, C. Hierold and L. Wirtz, *Nano Lett.*, 2007, **7**, 238–242.
- 42 A. C. Ferrari, J. C. Meyer, V. Scardaci, C. Casiraghi, M. Lazzeri, F. Mauri, S. Piscanec, D. Jiang, K. S. Novoselov, S. Roth and A. K. Geim, *Phys. Rev. Lett.*, 2006, **97**, 187401.
- 43 S. Ghosh, K. Ganesan, S. R. Polaki, T. R. Ravindran, N. G. Krishna, M. Kamruddin and A. K. Tyagi, *J. Raman Spectrosc.*, 2014, **45**, 642–649.
- 44 O. Akhavan, *Carbon*, 2010, **48**, 509–519.
- 45 S. Li, Y. Hu, Q. Xu, J. Sun, B. Hou and Y. Zhang, *J. Power Sources*, 2012, **213**, 265–269.
- 46 E. Sandoz-Rosado, W. Page, D. O'Brien, J. Przepioski, D. Mo, B. Wang, T.-T. Ngo-Duc, J. Gacusan, M. W. Winter, M. Meyyappan, R. D. Cormia, S. Takahashi and M. M. Oye, *J. Mater. Res.*, 2014, **29**, 417–425.
- 47 G. Jiahao, Z. Jianguo, Z. Hanqing, F. Yongshuang, M. Kun, H. Hao, C. Junming and W. Xuchun, *R. Soc. Open Sci.*, 2018, **5**, 180925.
- 48 Y. Hao, Y. Wang, L. Wang, Z. Ni, Z. Wang, R. Wang, C. K. Koo, Z. Shen and J. T. L. Thong, *Small*, 2010, **6**, 195–200.
- 49 A. Eckmann, A. Felten, A. Mishchenko, L. Britnell, R. Krupke, K. S. Novoselov and C. Casiraghi, *Nano Lett.*, 2012, **12**, 3925–3930.
- 50 S. Latil, V. Meunier and L. Henrard, *Phys. Rev. B: Condens. Matter Mater. Phys.*, 2007, **76**, 201402.
- 51 A. Malesevic, R. Vitchev, K. Schouteden, A. Volodin, L. Zhang, G. V. Tendeloo, A. Vanhulsel and C. V. Haesendonck, *Nanotechnology*, 2008, **19**, 305604.
- 52 A. Malesevic, R. Kemps, A. Vanhulsel, M. P. Chowdhury, A. Volodin and C. V. Haesendonck, *Jpn. J. Appl. Phys.*, 2008, **104**, 084301.
- 53 N. Soin, S. S. Roy, T. H. Lim and J. A. D. McLaughlin, *Mater. Chem. Phys.*, 2011, **129**, 1051–1057.
- 54 M. Zhu, R. Outlaw, M. Bagge-Hansen, H. Chen and D. Manos, *Carbon*, 2011, **49**, 2526–2531.
- 55 L. Cui, K. Cui, H. Ci, K. Zheng, H. Xie, X. Gao, Y. Zhang and Z. Liu, *Nanomaterials*, 2019, **9**, 558.
- 56 Y. Xin, J.-G. Liu, Y. Zhou, W. Liu, J. Gao, Y. Xie, Y. Yin and Z. Zou, *J. Power Sources*, 2011, **196**, 1012–1018.
- 57 S. Yang, N.-Y. Park, J. W. Han, C. Kim, S.-C. Lee and H. Lee, *Chem. Commun.*, 2012, **48**, 257–259.
- 58 D. Arjun, A. Rafik, C.-D. Horacio, L. James and B. Matthias, *APL Mater.*, 2013, **1**, 042107.
- 59 J. Song, C. Zhu, B. Xu, S. Fu, M. Engelhard, R. Ye, D. Du, S. Beckman and Y. Lin, *Adv. Energy Mater.*, 2017, **7**, 1601555.
- 60 N. G. Shang, P. Papakonstantinou, M. McMullan, M. Chu, A. Stamboulis, A. Potenza, S. S. Dhesi and H. Marchetto, *Adv. Funct. Mater.*, 2008, **18**, 3506–3514.
- 61 H. Medina, Y.-C. Lin, C. Jin, C.-C. Lu, C.-H. Yeh, K.-P. Huang, K. Suenaga, J. Robertson and P.-W. Chiu, *Adv. Funct. Mater.*, 2012, **22**, 2123–2128.
- 62 A. Nikitin, L.-A. Näslund, Z. Zhang and A. Nilsson, *Surf. Sci.*, 2008, **602**, 2575–2580.
- 63 R. S. Nicholson, *Anal. Chem.*, 1965, **37**, 1351–1355.
- 64 A. G.-M. Ferrari, C. W. Foster, P. J. Kelly, D. A. C. Brownson and C. E. Banks, *Biosensors*, 2018, **8**, 53.
- 65 J. M. D. Rodríguez, J. A. H. Melián and J. P. Peña, *J. Chem. Educ.*, 2000, **77**, 1195.
- 66 M. C. Tavares, S. A. S. Machado and L. H. Mazo, *Electrochim. Acta*, 2001, **46**, 4359–4369.
- 67 J. P. Hughes, P. L. dos Santos, M. P. Down, C. W. Foster, J. A. Bonacin, E. M. Keefe, S. J. Rowley-Neale and C. E. Banks, *Sustainable Energy Fuels*, 2020, **4**, 302–311.





- 68 K. Jiang, B. Liu, M. Luo, S. Ning, M. Peng, Y. Zhao, Y.-R. Lu, T.-S. Chan, F. M. F. de Groot and Y. Tan, *Nat. Commun.*, 2019, **10**, 1743.
- 69 A. Kalasapurayil Kunhiraman, M. Ramasamy and S. Ramanathan, *Int. J. Hydrogen Energy*, 2017, **42**, 9881–9891.
- 70 K. Li, Y. Li, Y. Wang, J. Ge, C. Liu and W. Xing, *Energy Environ. Sci.*, 2018, **11**, 1232–1239.
- 71 C. Wei, R. R. Rao, J. Peng, B. Huang, I. E. L. Stephens, M. Risch, Z. J. Xu and Y. Shao-Horn, *Adv. Mater.*, 2019, **31**, 1806296.
- 72 Y. Ding, H. Zheng, J. Li, S. Zhang, B. Liu and C. Ekberg, *Materials*, 2019, **12**, 1205.
- 73 W. R. Reynolds, P. Plucinski and C. G. Frost, *Catal. Sci. Technol.*, 2014, **4**, 948–954.
- 74 R. L. Borup, A. Kusoglu, K. C. Neyerlin, R. Mukundan, R. K. Ahluwalia, D. A. Cullen, K. L. More, A. Z. Weber and D. J. Myers, *Curr. Opin. Electrochem.*, 2020, **21**, 192–200.
- 75 A. G.-M. Ferrari, D. A. C. Brownson and C. E. Banks, *Sci. Rep.*, 2019, **9**, 15961.

