

Phylogenetic classification of the world's tropical forests

J. W. Ferry Slik^{a,1}, Janet Franklin^{b,1}, Víctor Arroyo-Rodríguez^c, Richard Field^d, Salomon Aguilar^e, Nikolay Aguirre^f, Jorge Ahumada^g, Shin-Ichiro Aiba^h, Luciana F. Alvesⁱ, Anitha K^j, Andres Avella^k, Francisco Mora^c, Gerardo A. Aymard C.^{l,m}, Selene Báezⁿ, Patricia Balvanera^c, Meredith L. Bastian^o, Jean-François Bastin^p, Peter J. Bellingham^q, Eduardo van den Berg^r, Polyanna da Conceição Bispo^s, Pascal Boeckx^t, Katrin Boehning-Gaese^{u,v}, Frans Bongers^w, Brad Boyle^x, Fabian Brambach^y, Francis Q. Brearley^z, Sandra Brown^{aa,2}, Shauna-Lee Chai^{bb}, Robin L. Chazdon^{cc}, Shengbin Chen^{dd}, Phourin Chhang^{ee}, George Chuyong^{ff}, Corneille Ewango^{gg}, Indiana M. Coronado^{hh}, Jurgi Cristóbal-Azkarateⁱⁱ, Heike Culmsee^{jj}, Kipiro Damas^{kk}, H. S. Dattaraja^{ll}, Priya Davidar^{mm}, Saara J. DeWaltⁿⁿ, Hazimah Din^a, Donald R. Drake^{oo}, Alvaro Duque^{pp}, Giselda Durigan^{qq}, Karl Eichhorn^{rr}, Eduardo Schmidt Eler^{ss}, Tsutomu Enoki^{tt}, Andreas Ensslin^{uu}, Adandé Belarmain Fandohan^{vv}, Nina Farwig^{ww}, Kenneth J. Feeley^{xx}, Markus Fischer^{uu}, Olle Forshed^{yy}, Queila Souza Garcia^{zz}, Satish Chandra Garkoti^{aaa}, Thomas W. Gillespie^{bbb}, Jean-Francois Gillet^{ccc}, Christelle Gonmadje^{ddd,eee}, Iñigo Granzow-de la Cerda^{fff}, Daniel M. Griffith^{ggg}, James Grogan^{hhh}, Khalid Rehman Hakeemⁱⁱⁱ, David J. Harris^{jjj}, Rhett D. Harrison^{kkk}, Andy Hector^{lll}, Andreas Hemp^{mmm}, Jürgen Homeierⁿⁿⁿ, M. Shah Hussain^{ooo}, Guillermo Ibarra-Manríquez^c, I. Faridah Hanum^{ppp}, Nobuo Imai^{qqq}, Patrick A. Jansen^{e,w}, Carlos Alfredo Joly^{rrr}, Shijo Joseph^{sss}, Kuswata Kartawinata^{ttt,uuu}, Elizabeth Kearsley^{vvv}, Daniel L. Kelly^{www}, Michael Kessler^{xxx}, Timothy J. Killeen^{yyy}, Robert M. Kooyman^{zzz,aaaa}, Yves Laumonierⁱ, Susan G. Laurance^{bbbb}, William F. Laurance^{bbbb}, Michael J. Lawes^{cccc}, Susan G. Letcher^{ddd}, Jeremy Lindsell^{eeee}, Jon Lovett^{fff,ggg}, Jose Lozada^{hhh}, Xinghui Luⁱⁱⁱ, Anne Mette Lykke^{jjj}, Khairil Bin Mahmud^{kkkk}, Ni Putu Diana Mahayani^{lll}, Asyraf Mansor^{mmmm,nnnn}, Andrew R. Marshall^{oooo,pppp,qqqq}, Emanuel H. Martin^{rrrr}, Darley Calderado Leal Matos^{ssss}, Jorge A. Meave^{tttt}, Felipe P. L. Melo^{uuuu}, Zhofre Huberto Aguirre Mendoza^{vvvv}, Faizah Metali^a, Vincent P. Medjibe^{wwwww}, Jean Paul Metzger^{xxxx}, Thiago Metzker^{zz,yyyy}, D. Mohandass^{mm,zzzz}, Miguel A. Munguía-Rosas^{aaaaa}, Rodrigo Muñoz^{tttt}, Eddy Nurtjahy^{bbbbb}, Eddie Lenza de Oliveira^{cccc}, Onrizal^{ddddd}, Pia Parolin^{eeee,ffff}, Marc Parren^{ggggg}, N. Parthasarathy^{mmm}, Ekananda Paudel^{hhhhh}, Rolando Perez^e, Eduardo A. Pérez-García^{tttt}, Ulf Pommer^u, Lourens Poorter^w, Lan Qie^{ffff}, Maria Teresa F. Piedade^{ss}, José Roberto Rodrigues Pintoⁱⁱⁱⁱ, Axel Dalberg Poulsen^{jjj}, John R. Poulsen^{jjjj}, Jennifer S. Powers^{kkkkk}, Rama Chandra Prasad^{lllll}, Jean-Philippe Puyravaud^{mmmmmm}, Orlando Rangel^k, Jan Reitsmaⁿⁿⁿⁿⁿ, Diogo S. B. Rocha^{ooooo}, Samir Rolim^{ppppp}, Francesco Rovero^{qqqqq}, Andes Rozak^{rrrrr}, Kalle Ruokolainen^{sssss}, Ervan Rutishauser^e, Gemma Rutten^{uuu}, Mohd. Nizam Mohd. Said^{ttttt}, Felipe Z. Saiter^{uuuuu}, Philippe Saner^{vvvvv}, Braulio Santos^{wwwwww}, João Roberto dos Santos^{xxxxx}, Swapan Kumar Sarker^{yyyyy}, Christine B. Schmitt^{zzzzz,aaaaa}, Jochen Schoengart^{ss}, Mark Schulze^{bbbbb}, Douglas Sheil^{cccc}, Plinio Sist^{ddddd}, Alexandre F. Souza^{eeeeee}, Wilson Roberto Spironello^{ss}, Tereza Sposito^{zz,yyyy}, Robert Steinmetz^{fffff}, Tariq Stevart^{ggggg}, Marcio Seiji Suganuma^{hhhhh}, Rahayu Sukri^a, Aisha Sultanaⁱⁱⁱⁱ, Raman Sukumar^{ll}, Terry Sunderland^j, Supriyadi^{llll}, H. S. Suresh^{ll}, Eizi Suzuki^h, Marcelo Tabarelli^{jjjj}, Jianwei Tang^{kkkkkk}, Ed V. J. Tanner^{lllll}, Natalia Targhetta^{ss}, Ida Theilade^{mmmmmm}, Duncan Thomasⁿⁿⁿⁿⁿ, Jonathan Timberlake^{gggg}, Márcio de Morisson Valeriano^{xxxxx}, Johan van Valkenburg^{ooooo}, Tran Van Do^{ppppp}, Hoang Van Sam^{qqqqq}, John H. Vandermeer^{rrrrr}, Hans Verbeek^{vvv}, Ole Reidar Vetaas^{sssss}, Victor Adekunle^{ttttt}, Simone A. Vieira^{rrr}, Campbell O. Webb^{uuuuu}, Edward L. Webb^{vvvvv}, Timothy Whitfeld^{wwwwwww}, Serge Wich^{xxxxx,yyyyy}, John Williams^{zzzzz}, Susan Wiser^q, Florian Wittmann^{aaaaaaa}, Xiaobo Yang^{bbbbb}, C. Yves Adou Yao^{cccccc}, Sandra L. Yap^{ddddd}, Rakan A. Zahawi^{eeeeeee}, Rahmad Zakaria^{mmmm}, and Runguo Zangⁱⁱⁱⁱ

Contributed by Janet Franklin, December 12, 2017 (sent for review September 7, 2017; reviewed by Lucas C. Majure and Jens-Christian Svenning)

Author contributions: J.W.F.S. and J.F. designed research; J.W.F.S. and J.F. performed research; J.W.F.S., V.A.-R., R.F., S.A., N.A., J.A., S.-I.A., L.F.A., A.K., A.A., F. Mora, G.A.A.C., S. Báez, P. Balvanera, M.L.B., J.-F.B., P.J.B., E.v.d.B., P.d.C.B., P. Boeckx, K.B.-G., F. Bongers, B.B., F. Brambach, F.Q.B., S. Brown, S.-L.C., R.L.C., S.C., P.C., G.C., C.E., I.M.C., J.C.-A., H.C., K.D., H.S.D., P.D., S.J.D., H.D., D.R.D., A.D., G.D., K.E., E.S.E., T.E., A.E., A.B.F., N.F., K.J.F., M.F., O.F., Q.S.G., S.C.G., T.W.G., J.-F.G., C.G., I.G.-d.I.C., D.M.G., J.G., K.R.H., D.J.H., R.D.H., A. Hector, A. Hemp, J.H., M.S.H., G.I.-M., I.F.H., N.I., P.A.J., C.A.J., S.J., K.K., E.K., D.L.K., M.K., T.J.K., R.M.K., Y.L., S. G. Laurance, W.F.L., M.J.L., S. G. Letcher, J. Lovett, J. Lozada, X.L., A.M.L., K.B.M., N.P.D.M., A.M., A.R.M., E.H.M., D.C.L.M., J.A.M., F.P.L.M., Z.H.A.M., F. Metali, V.P.M., J.P.M., T.M., D.M., M.A.M.-R., R.M., E.N., E.L.d.O., O., P.P., M.P., N.P., E.P., R.P., E.A.P.-G., U.P., L.P., L.Q., M.T.F.P., J.R.R.P., A.D.P., J.R.P., J.S.P., R.C.P., J.-P.P., O.R., J.R., D.S.B.R., S.R., F.R., A.R., K.R., E.R., G.R., M.N.M.S., F.Z.S., P. Saner, B.S., J.R.d.S., S.K.S., C.B.S., J.S., M.S., D.S., P. Sist, A.F.S., W.R.S., T. Sposito, R. Steinmetz, T. Stevart, M.S.S., R. Sukri, A.S., R. Sukumar, T. Sunderland, S., H.S.S., E.S., M.T., J. Tang, E.V.J.T., N.T., I.T., D.T., J. Timberlake, M.d.M.V., J.v.V., T.V.D., H.V.S., J.H.V., H.V., O.R.V., V.A., S.A.V., C.O.W., E.L.W., T.W., S. Wich, J.W., S. Wiser, F.W., X.Y., C.Y.A.Y., S.L.Y., R.A.Z., R. Zakaria, and R. Zang contributed new reagents/analytic tools; J.W.F.S. and V.A.-R. analyzed data; and J.W.F.S., J.F., V.A.-R., R.F., S.A., N.A., J.A., S.-I.A., L.F.A., A.K., A.A., F. Mora, G.A.A.C., S. Báez, P. Balvanera, M.L.B., J.-F.B., P.J.B., E.v.d.B., P.d.C.B., P. Boeckx, K.B.-G., F. Bongers, B.B., F. Brambach, F.Q.B., S. Brown, S.-L.C., R.L.C., S.C., P.C., G.C., C.E., I.M.C., J.C.-A., H.C., K.D., H.S.D., P.D., S.J.D., H.D., D.R.D., A.D., G.D., K.E., E.S.E., T.E., A.E., A.B.F., N.F., K.J.F., M.F., O.F., Q.S.G., S.C.G., T.W.G., J.-F.G., C.G., I.G.-d.I.C., D.M.G., J.G., K.R.H., D.J.H., R.D.H., A. Hector, A. Hemp, J.H., M.S.H., G.I.-M., I.F.H., N.I., P.A.J., S.J., K.K., E.K., D.L.K., M.K., T.J.K., R.M.K., Y.L., S. G. Laurance, W.F.L., M.J.L., S. G. Letcher, J. Lovett, J. Lozada, X.L., A.M.L., K.B.M., N.P.D.M., A.M., A.R.M., E.H.M., D.C.L.M., J.A.M., F.P.L.M., Z.H.A.M., F. Metali, V.P.M., J.P.M., T.M., D.M., M.A.M.-R., R.M., E.N., E.L.d.O., O., P.P., M.P., N.P., E.P., R.P., E.A.P.-G., U.P., L.P., L.Q., M.T.F.P., J.R.R.P., A.D.P., J.R.P., J.S.P., R.C.P., J.-P.P., O.R., J.R., D.S.B.R., S.R., F.R., A.R., K.R., E.R., G.R., M.N.M.S., F.Z.S., P. Saner, B.S., J.R.d.S., S.K.S., C.B.S., J.S., M.S., D.S., P. Sist, A.F.S., W.R.S., T. Sposito, R. Steinmetz, T. Stevart, M.S.S., R. Sukri, A.S., R. Sukumar, T. Sunderland, S., H.S.S., E.S., M.T., J. Tang, E.V.J.T., N.T., I.T., D.T., J. Timberlake, M.d.M.V., J.v.V., T.V.D., H.V.S., J.H.V., H.V., O.R.V., V.A., S.A.V., C.O.W., E.L.W., T.W., S.W., J.W., S. Wiser, F.W., X.Y., C.Y.A.Y., S.L.Y., R.A.Z., R. Zakaria, and R. Zang wrote the paper.

Reviewers: L.C.M., Desert Botanical Garden; and J.-C.S., Aarhus University.

Conflict of interest statement: V.A.-R., K.B.-G., B.B., F.Q.B., N.F., M.K., W.F.L., S. G. Letcher, C.B.S., D.S., T. Stevart, and S. Wiser have coauthored papers with Jens-Christian Svenning in the past 48 months. A.M.L. and Jens-Christian Svenning are both affiliated with Aarhus University.

This open access article is distributed under [Creative Commons Attribution-NonCommercial-NoDerivatives License 4.0 \(CC BY-NC-ND\)](https://creativecommons.org/licenses/by-nc-nd/4.0/).

¹To whom correspondence may be addressed. Email: ferryslik@hotmail.com or janet.franklin@ucr.edu.

²Deceased February 13, 2017.

This article contains supporting information online at www.pnas.org/lookup/suppl/doi:10.1073/pnas.1714977115/-DCSupplemental.

Knowledge about the biogeographic affinities of the world's tropical forests helps to better understand regional differences in forest structure, diversity, composition, and dynamics. Such understanding will enable anticipation of region-specific responses to global environmental change. Modern phylogenies, in combination with broad coverage of species inventory data, now allow for global biogeographic analyses that take species evolutionary distance into account. Here we present a classification of the world's tropical forests based on their phylogenetic similarity. We identify five principal floristic regions and their floristic relationships: (i) Indo-Pacific, (ii) Subtropical, (iii) African, (iv) American, and (v) Dry forests. Our results do not support the traditional neo- versus paleotropical forest division but instead separate the combined American and African forests from their Indo-Pacific counterparts. We also find indications for the existence of a global dry forest region, with representatives in America, Africa, Madagascar, and India. Additionally, a northern-hemisphere Subtropical forest region was identified with representatives in Asia and America, providing support for a link between Asian and American northern-hemisphere forests.

biogeographic legacies | forest classification | forest functional similarity | phylogenetic community distance | tropical forests

The biogeographic origin of species, in combination with dispersal limitation and environmental filtering, are the principal determinants of spatial variation in the species composition of tropical forests (1, 2). Despite evidence of long-distance dispersal (1, 3–5), tropical forests maintain conspicuous regional differences in species composition. For example, only ~4% of tropical tree species are shared among Africa, America, and Asia (6). The lack of species overlap among continents makes global inference of relationships among tropical forests problematic, because such classifications depend on comparison of the amount of shared species. Therefore, pan-tropical biogeographic analyses have been based on comparison of compositional patterns at higher taxonomic levels, namely genus or family (6–8). However, such analyses treat taxa as independent units, while in reality taxa vary in their degree of phylogenetic relatedness and, as a consequence, their morphological and ecological similarity (1, 2). Taking phylogenetic relatedness into consideration enhances our ability to delimit phytogeographical boundaries that characterize functional and biogeographic affinities among forest regions (1, 2, 9, 10). Here we include phylogenetic relationships in a floristic analysis to provide such insight.

We compiled a standardized dataset of old-growth tropical forest inventories of angiosperm trees (trunk diameter ≥ 10 cm) for 406 1° latitude/longitude grid cells (hereafter referred to as “locations”) originally dominated by natural forests across the (sub)tropics (Table S1). These locations represented all major tropical forest regions and had broad environmental amplitude, including low to high elevations and dry to wet forests (Fig. 1 and Fig. S1). To determine the phylogenetic distance between locations, we constructed a dated phylogenetic tree that was resolved to genus level and contained all taxa used for our classification analyses (Dataset S1). Location pairwise phylogenetic distance matrices were constructed using 20 randomly drawn tree taxa per location. We used 20 taxa, as this maximized the number of locations that could be included in the classification analyses while still providing a reliable classification result. In total, we generated 20 phylogenetic distance matrices, each with a different set of 20 randomly drawn taxa per location, which served as input for 20 cluster analyses (Fig. S2). The final classification of each location depended on the frequency with which it was classified in a particular cluster across all 20 cluster analyses (Fig. S3). Relationships between the clusters were represented by a majority rule consensus tree (Fig. 1).

Significance

Identifying and explaining regional differences in tropical forest dynamics, structure, diversity, and composition are critical for anticipating region-specific responses to global environmental change. Floristic classifications are of fundamental importance for these efforts. Here we provide a global tropical forest classification that is explicitly based on community evolutionary similarity, resulting in identification of five major tropical forest regions and their relationships: (i) Indo-Pacific, (ii) Subtropical, (iii) African, (iv) American, and (v) Dry forests. African and American forests are grouped, reflecting their former western Gondwanan connection, while Indo-Pacific forests range from eastern Africa and Madagascar to Australia and the Pacific. The connection between northern-hemisphere Asian and American forests is confirmed, while Dry forests are identified as a single tropical biome.

Results and Discussion

Mean pairwise phylogenetic distance analysis, which emphasizes ancient lineages in phylogenetic community comparisons, detected almost no spatial patterns in community phylogenetic similarity across the tropics, indicating that all tropical forest locations consist of more or less the same set of ancient plant lineages. This is in accordance with recent findings that the whole present-day tropics are dominated by similar high levels of Late Cretaceous aged phylogenetic lineages (11). Only when we used mean nearest taxon distance, which emphasizes recent lineages in phylogenetic community comparisons, did we detect clear spatial patterns across the tropics. Therefore, current-day biogeographic patterns in the tropics seem to mainly reflect Cenozoic speciation events when Gondwanan breakup was already well on its way.

Using the mean nearest taxon distance, our phylogenetic cluster analyses showed that the world's tropical forests are divided into two major floristic regions: a combined American-African versus Indo-Pacific region (Fig. 1). This division contradicts previous hypotheses about major global realms, which either recognized neo- versus paleotropical regions or several separate continental regions (4, 12–14). However, Gentry (7) already noted the high generic-level similarity of tropical American and African forests. He attributed this to Cretaceous and Cenozoic plate tectonic history (4, 15). Subsequent studies have shown that despite the severing of direct land connections between the African and South American plates ca. 96 Mya, long-distance dispersal continued throughout the Late Cretaceous and Early Tertiary across the widening Atlantic Ocean (4, 5). The combined effect of shared origin with trans-Atlantic migration may explain the detected connection between South American and African forests.

Within the American-African cluster, the first split separated the African from the American regions (Fig. 1), suggestive of the west Gondwanan breakup associated with the formation of the Atlantic Ocean and, over time, the increasing difficulty for plants to disperse across the Atlantic (1, 15). Interestingly, the African region showed the highest consistency in clustering of all five identified floristic regions. On average, locations belonging to the African region were assigned to this cluster in 91.4% of cases, versus consistency values of 79.5, 63.7, 79.5, and 70.3% for the Indo-Pacific, Subtropical, American, and Dry forest regions, respectively. This clustering consistency indicates high floristic similarity across tropical Africa, which is in accord with the relatively low beta diversity observed for these forests (6). Postulated repeated cycles of contraction and expansion of the tropical African forests from a few small forest refugia in combination

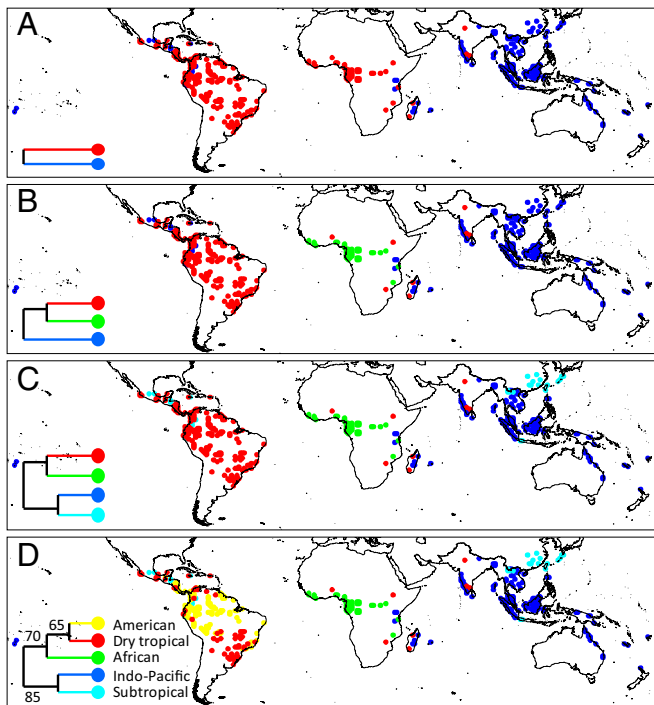


Fig. 1. Classification maps of the world's tropical forests, showing two (A), three (B), four (C), and five (D) clusters. Cluster result represents a majority rule consensus tree, with the percentage of times that each grouping was observed in the 20 separate cluster analyses shown in D. Only locations that could be classified with certainty ($P < 0.05$) are shown ($n = 392$).

with large-scale species shifts during the Pleistocene glaciations may explain the relatively high compositional homogeneity of the forests within the African region (16, 17).

The tropical American forests were further divided into moist and dry forests (Fig. 1 and Fig. S1), indicating that this division is primarily environmental (18). The American floristic region comprises humid forests, including the lowland forests of Central America, the Amazon basin, the Guianas, and the northern half of the Atlantic forest. The Dry forest region encompasses the Caatinga and Cerrado regions as well as other dry forests throughout the Americas but interestingly, and contrary to the nonphylogenetic pan-tropical analysis by Dexter et al. (8), also includes dry forests of Africa, Madagascar, and India. Further research is needed to confirm whether this indicates the existence of a global dry forest region with a shared biogeographic origin, or whether selection for drought and fire resistance has favored the dominance of similar plant lineages in tropical dry forests around the world (8, 18, 19).

The Indo-Pacific floristic region occupies the humid areas of eastern Africa, Madagascar, India, Southeast Asia, Australia, and the Pacific Islands (Fig. 1). With the exception of SE Asia, which is of Laurasian origin, this floristic region combines all areas that once comprised eastern Gondwana (4, 15). Given the diverse geologic history of Asia and the Indo-Pacific (20), it is surprising to find a similar forest type covering most of the region. Nevertheless, there is strong evidence of significant plant migration within this region that likely had a homogenizing effect, notably the biotic exchange between India and Southeast Asia starting from ca. 45 Mya (21), and between Southeast Asia and Australia, New Guinea, and the Pacific Islands that commenced ca. 15 Mya (4). The presence of Indo-Pacific forests in eastern continental Africa may either reflect eastern Gondwanan origin or dispersal within the Indo-Pacific region.

We also identified a group of locations in Asia and America that occupies cooler climates and higher elevations relative to the other identified forest clusters (Fig. 1 and Fig. S1), and which we therefore termed the Subtropical region. This Subtropical floristic region confirms the floristic link between Asia and North America, reflecting a shared boreotropical affinity (22). Within Asia, the Subtropical region is mostly restricted to the subtropics, with the exception of high-elevation forests of Java. In the Americas, by contrast, this floristic region extends from the subtropics deep into the tropics, probably because the cooler montane climate of the Central American highlands and South American Andes has facilitated the southward migration of cold-adapted plant lineages. The absence of continuous, North-South-oriented mountain chains in Asia may have limited the dispersal of such lineages into lower latitudes.

Conclusion

We provide a phylogenetic distance-based biogeographic classification of the world's tropical forests, using the most extensive sampling scheme for the tropics currently in existence. Our results uncover floristic patterns which will help in the development of region-specific models for forest structure, diversity, and dynamics as well as possible responses of tropical forest regions to global environmental change. Our results may necessitate reconsideration of established biogeographic ideas. For example, Madagascar and New Guinea have often been considered two separate major tropical regions, ecologically and biogeographically distinct from tropical America, Africa, and Southeast Asia (23, 24). However, despite their highly endemic species compositions, we show that they are both part of the widespread Indo-Pacific floristic region. Finally, our analysis can serve as a model for classifying regional floras.

Materials and Methods

Tree Inventory Dataset. Individual angiosperm trees (diameter at breast height ≥ 10 cm) from old-growth forest inventories throughout the (sub)tropics (between -35°S and 35°N latitudes) were pooled within their respective 1° latitude/longitude grid cells (henceforth called locations). These locations represented all major tropical forest regions and had broad environmental amplitude, including low to high elevations and dry to wet forests (Fig. S1). Monocots and Cactaceae were excluded because these were not consistently surveyed in all datasets. This dataset originally included 439 locations containing 925,009 individual trees belonging to 15,012 taxa. Species names were standardized using The Plant List (www.theplantlist.org), Taxonomic Name Resolution Service (tnrs.iplantcollaborative.org/TNRSApp.html), and Asian Plant Synonym Lookup (phylodiversity.net/fslik/synonym_lookup.htm). On average, 1.4% of individual stems per location remained unidentified. These unidentified individuals were excluded from further analyses.

Community Phylogenetic Tree. The APG-III classification (25) served as the family-level backbone of our community phylogenetic tree. Recent updates in APG-IV (26) are mostly of nomenclatural nature and did not affect our analyses. This tree was further resolved up to genus level using the species-level phylogeny (32,223 species included) published by Zanne et al. (27), which covered most genera in our dataset (Dataset S1). Genera present in our dataset, but not in Zanne et al. (27), were placed at the base of their respective families. Genera that had disjunct species occurrences in the phylogeny of Zanne et al. (27) were placed at the most basal node connecting the disjunct species. This phylogeny was subsequently dated using the BLADJ function in Phylocom v4.2 (28), using taxon ages given in Magallón et al. (29) for the age file.

Phylogenetic Distance Analysis. Phylogenetic distance between all pairs of locations was calculated using the options COMDIST and COMDISTNT in Phylocom v4.2 (28). COMDIST uses the mean pairwise phylogenetic distance (MPPD); for each taxon in a location, it finds the average phylogenetic distance to all taxa in the other location, and calculates the mean. COMDISTNT uses the mean nearest taxon distance (MNTD); for each taxon in location 1, it finds the nearest phylogenetic neighbor in location 2, records this, and calculates the mean. Both functions return a symmetrical matrix of locations

versus locations with their pairwise phylogenetic distances. Principal coordinate (PCO) analyses (in MultiVariate Statistical Package v3.13; Kovach Computing Services) on resulting location versus location matrices showed that the MPPD matrices had almost no explanatory power (generally the first five PCO axes explained less than 5% of data variance), meaning that detected patterns were mostly random. The MNTD matrices, however, explained considerable amounts of data variance in the first five axes of the PCO. Therefore, we used only MNTD for further analysis.

Correcting for Taxon Richness Bias in MNTD. Taxon richness differed considerably between locations, varying between 4 and 1,466. MNTD may be sensitive to such differences in taxon richness because the chance of finding a close relative between two locations may increase when their taxon richness increases. Applying MNTD to determine phylogenetic distance between locations with differing taxon numbers could therefore result in taxon-rich locations being grouped together in the cluster analysis simply because they are more taxon-rich. To determine the impact of this effect, we created five “location-by-taxon” matrices, each with a lower number of taxa per location (320, 160, 80, 40, and 20 taxa per location), using the 41 locations containing more than 320 taxa. For each location, taxa were ranked according to abundance, so that the location-by-taxon matrix based on, for example, 320 taxa consisted only of the 320 most abundant taxa per location. Where tied abundances exceeded the predefined number of taxa, we randomly selected the appropriate number of taxa from among those with tied minimum abundance. We then calculated the MNTD matrices for each of these five location-by-taxon matrices and found that with increasing taxon richness of locations, MNTD (as averaged over all locations) decreased with increasing taxon richness per location following a power function [$y = 310.4x^{-0.194}$ (Fig. S4)], demonstrating that MNTD is indeed sensitive to taxon richness.

Determining the Optimal Number of Taxa per Location for Further Analysis. To avoid taxon richness bias when using MNTD, locations had to be compared based on similar numbers of taxa. Minimum variance clustering, based on the five location-by-taxon matrices described earlier, consistently recovered the same major clusters in the same configuration (African and American locations clustered on one main branch and Asian locations clustered on the other), although the relationships between locations within these main clusters could vary (Fig. S5). Only in the 20-taxon analysis was one American location (location no. 165 from the Brazilian Atlantic Forest) placed in the Asian cluster. The amount of variance captured in the first five axes of a PCO analysis (using the same MNTD matrices) declined by only ~20%, from 83.3 to 60.7%, between the 320- and 20-taxon analyses, respectively. We decided to use 20 taxa per location in the final analyses (Table S1) because of this limited loss of information in the PCO and similarity of cluster results. In addition, we were able to use most of our locations (406 of the initial 439), including locations on remote islands and extreme habitats that would have been excluded if we had set the minimum number of taxa too high.

Forest Classification Analyses. For the final analyses, we produced 20 location-by-taxon datasets. In these datasets, each location was represented by 20 randomly drawn taxa (from that location). Random draws were irrespective of taxon abundance, as abundance is a spatially and temporally labile taxon trait that likely reflects contemporary environmental conditions rather than historical biogeographic signal. For each of these 20 location-by-taxon datasets, we calculated the corresponding symmetrical location-by-location matrices with their pairwise phylogenetic distances (MNTD). These matrices were then used as input for cluster analyses.

Locations were grouped in clusters using Ward’s minimum variance method (30), using MultiVariate Statistical Package v3.13. This is a centroid-based clustering technique that identifies cluster centers (centroids) by minimizing the overall squared distances of the objects (in this case locations) to the

centroids at each cluster level. This clustering technique identified spatially clearly defined location groupings (Fig. S2). The optimal number of clusters for defining floristic regions across the tropics was determined by calculating the cophenetic correlation coefficient at each cluster level, starting at the first split (K2) in the dendrogram. The cophenetic correlation coefficient calculates the correlation between the distance of the clusters as calculated by the clustering algorithm and the distance based on observed MNTD values between clusters. The higher the cophenetic correlation, the better the cluster result reflects the patterns present in the original distance matrix. We applied this method to each of our 20 datasets, calculated the average cophenetic correlation coefficient for each cluster level, and found a steep increase in cophenetic correlation up to K5, after which it slowly declined (Fig. S6). Therefore, we chose K5 as the optimum level for defining our main floristic regions across the tropics.

For each location, at cluster level K5, we determined the cluster in which it was classified for each of the 20 cluster analyses that we performed. The location was then assigned to the cluster in which it had the highest proportion of observations. A single proportion test (31), which calculates the probability of an observed (sample) proportion (in the range 0 to 1) against a hypothetical proportion, was then used to determine if the observed proportions were significantly higher than expected by random [Paleontological Statistics (PAST) v3.08; <https://folk.uio.no/ohammer/past/>]. For example, for K5, the expected random proportion of locations per cluster is 0.2. For a sample size of 20, a proportion has to be at least 0.38 to be significantly higher ($P < 0.05$) than the random expectation. The resulting classification success rates of locations for K5 are shown in Fig. S3 and Table S1. The final classification (K5) of the clusters was based on the majority consensus rule (Fig. 1).

ACKNOWLEDGMENTS. This study benefited greatly from data contributed by Patricia Alvarez-Loayza, Ana Andrade, Peter Ashton, Julian Bayliss, Luis Bernacci, Lilian Blanc, J. Bogaert, Matt Bradford, Mireille Breuer Ndoundou Hockemba, C. De Cannière, Miguel Castillo, Eduardo Catharino, Connie Clark, David Clark, Deborah Clark, Gilles Dauby, Jean-Louis Doucet, Pedro Eisenlohr, Leandro Ferreira, Christine Fletcher, Geraldo Franco, Gabriella M. Fredriksson, Giriraj, Nimal Gunatilleke, Terese Hart, Miriam van Heist, Zhila Hemati, M. A. Hernández-Ruedas, David Kenfack, Kanehiro Kitayama, Eileen Larney, Ieda Leao do Amaral, Jean-Remy Makana, Punci Manage Saranga Amila Ruwan, Antti Marjokorpi, Olga Martha Montiel, Miguel Martínez-Ramos, Henrik Meilby, Jerome Millet, Cao Min, Kazuki Miyamoto, Xiaoxue Mo, Juan Carlos Montero, Badru Mugera, Pantaleo Munishi, Helen Murphy, Hidetoshi Nagamasu, David Newbery, Rueben Nilus, Meyner Nusalawo, Susana Ochoa-Gaona, Atila Oliveira, Navendu Page, Andrea Permana, Nigel Pitman, Jean Razafimahaimodison, Rocío Rojas, Hugo Romero, M. Z. Rozainah, Fernanda Santos, Manichanh Satdichanh, Lars Schmidt, Lila Nath Sharma, Kade Sidiyasa, Eduardo da Silva Pinheiro, Peguy Tchouto, Johanna Urtado, Renato Valencia, Luis Valenzuela, Rodolfo Vasquez, Thorsten Wiegand, Guadalupe Williams-Linera, Hansjoerg Woll, Tsuyoshi Yoneda, and Nicole Zweifel. We also acknowledge contributed financial support from the European Union’s Horizon 2020 Research and Innovation Programme under Marie Skłodowska-Curie Grant Agreement 660020, Instituto Bem Ambiental (IBAM), Myr Projetos Sustentáveis, IEF, and CNPq, CAPES FAPEMIG, German Research Foundation (DFG), Grants CRC 552, CU127/3-1, HO 3296/2-2, HO3296/4-1, and RU 816), UNAM-PAPIIT IN218416 and Semarnat-CONACYT 128136, Conselho Nacional de Desenvolvimento Científico e Tecnológico (CNPq, Brazil), Fundação Grupo Boticário de Proteção à Natureza/Brazil, PAPIIT-DGAPA-UNAM (Project IN-204215), National Geographic Society, National Foundation for Scientific and Technology Development Vietnam (Grant 106.11-2010.68), Operation Wallacea, and core funding for Crown Research Institutes from the New Zealand Ministry of Business, Innovation and Employment’s Science and Innovation Group. Some data in this publication were provided by the Tropical Ecology Assessment and Monitoring Network, a collaboration between Conservation International, the Missouri Botanical Garden, Smithsonian Institution, and Wildlife Conservation Society, and partially funded by these institutions, The Gordon and Betty Moore Foundation, and other donors.

^aEnvironmental and Life Sciences, Faculty of Science, Universiti Brunei Darussalam, Gadong BE1410, Brunei Darussalam; ^bDepartment of Botany and Plant Sciences, University of California, Riverside, CA 92521; ^cInstituto de Investigaciones en Ecosistemas y Sustentabilidad, Universidad Nacional Autónoma de México, 58190 Morelia, Michoacán, Mexico; ^dSchool of Geography, University of Nottingham, Nottingham NG7 2RD, United Kingdom; ^eCenter for Tropical Forest Science, Smithsonian Tropical Research Institute, Ancon, Panama; ^fBiodiversity and Ecosystem Services Research Program, Universidad Nacional de Loja, Loja EC110103, Ecuador; ^gThe Moore Center for Science, Conservation International, Arlington, VA 22202; ^hGraduate School of Science and Engineering, Kagoshima University, Kagoshima 890-0065, Japan; ⁱCenter for Tropical Research, Institute of the Environment and Sustainability, University of California, Los Angeles, CA 90095; ^jForest and Environment Program, Center for International Forestry Research (CIFOR), Bogor 16115, Indonesia; ^kInstituto de Ciencias Naturales, Universidad Nacional de Colombia, Sede Bogotá 111321, Colombia; ^lUNELLEZ-Guanare, Programa de Ciencias del Agro y el Mar, Herbario Universitario (PORT), Mesa de Cavacas, Estado Portuguesa 3350, Venezuela; ^mCompensation International Progress S.A.–Ciprogress Greenlife, Bogotá D.C., Colombia; ⁿDepartamento de Biología, Escuela Politécnica Nacional del Ecuador, Ladrón de Guevara E11-253, Quito, Ecuador; ^oSmithsonian’s National Zoo, Animal Care Sciences, Primates, Washington, DC 20013-7012; ^pInstitute of Integrative Biology, Department of Environmental Systems Science, ETH Zurich, 8092 Zurich, Switzerland; ^qLandcare Research Manaaki Whenua, Lincoln 7640, New Zealand; ^rDepartamento de Biología, Universidade Federal de Lavras, Lavras-MG, 37200-000, Brazil; ^sCentre for Landscape and Climate

Research, Department of Geography, University of Leicester, Leicester LE1 7RH, United Kingdom; ⁴Isotope Bioscience Laboratory (ISOFYS), Department of Green Chemistry and Technology, Faculty of Bioscience Engineering, Ghent University, B-9000 Ghent, Belgium; ⁵Senckenberg Biodiversity and Climate Research Centre (BiK-F), 60325 Frankfurt (Main), Germany; ⁶Institute for Ecology, Evolution and Diversity, Goethe University Frankfurt, 60439 Frankfurt (Main), Germany; ⁷Forest Ecology and Forest Management Group, Wageningen University & Research, 6700 AA Wageningen, The Netherlands; ⁸Hardner & Gullison Associates, Victoria, BC V8P 1A9, Canada; ⁹Ecology and Ecosystem Research, Georg August University Göttingen, 37073 Göttingen, Germany; ¹⁰School of Science and the Environment, Manchester Metropolitan University, Manchester M1 5GD, United Kingdom; ¹¹Environment Group, Winrock International, St Dogmaels SA43 3 DT, United Kingdom; ¹²Ecosystem Management Unit, InnoTech Alberta, Vegreville, AB T9C 1T4, Canada; ¹³Department of Ecology and Evolutionary Biology, University of Connecticut, Storrs, CT 06269-3043; ¹⁴College of Environment and Ecology, Chengdu University of Technology, Chengdu 610059, China; ¹⁵Forest and Wildlife Research Institute, 12101 Phnom Penh, Cambodia; ¹⁶Department of Botany and Plant Physiology, University of Buea, POB 63 Buea, Cameroon; ¹⁷Wildlife Conservation Society-Program DR Congo, B.P. 14537 Brazzaville, DR Congo; ¹⁸Departamento de Biología, Facultad de Ciencias y Tecnología, Universidad Nacional Autónoma de Nicaragua, Herbario HULE, León 505, Nicaragua; ¹⁹Division of Biological Anthropology, University of Cambridge, Cambridge CB2 3QG, United Kingdom; ²⁰DBU Natural Heritage, German Federal Foundation for the Environment, 49090 Osnabrück, Germany; ²¹PNG Forest Research Institute, Lae 411, Morobe Province, Papua New Guinea; ²²Centre for Ecological Sciences, Indian Institute of Science, Bangalore 560012, India; ²³Department of Ecology and Environmental Sciences, Pondicherry University, Puducherry 605014, India; ²⁴Department of Biological Sciences, Clemson University, Clemson, SC 29634; ²⁵Botany Department, University of Hawaii, Honolulu, HI 96822; ²⁶Departamento de Ciencias Forestales, Universidad Nacional de Colombia, Medellín, Colombia; ²⁷Laboratório de Ecologia e Hidrologia Florestal, Floresta Estadual de Assis, Instituto Florestal de SP, 19802-970 Assis, SP, Brazil; ²⁸Eichhorn Ecologie, 3702 BK Zeist, The Netherlands; ²⁹Instituto Nacional de Pesquisas da Amazônia-INPA, Araújo, CEP 69067-375 Manaus AM, Brazil; ³⁰Kasuya Research Forest, Kyushu University, Sasaguri, Fukuoka 811-2415, Japan; ³¹Institute of Plant Sciences, University of Bern, 3013 Bern, Switzerland; ³²Ecole de Foresterie et Ingénierie du Bois, Université Nationale d'Agriculture, BP 45, Kétou, Benin; ³³Conservation Ecology, Faculty of Biology, Philipps-Universität Marburg, 35032 Marburg, Germany; ³⁴Department of Biology, University of Miami, Coral Gables, FL 33146; ³⁵WWF-Sweden/Världsnaturfonden WWF, Ulriksdals Slott, S-170 81 Solna, Sweden; ³⁶Departamento de Botânica, Universidade Federal de Minas Gerais, Pampulha, 31270-901 Belo Horizonte, Minas Gerais, Brazil; ³⁷School of Environmental Sciences, Jawaharlal Nehru University, New Delhi 110067, India; ³⁸Department of Geography, University of California, Los Angeles, CA 90095; ³⁹TERRA Teaching and Research Center, Central African Forests, Gembloux Agro-Bio Tech, University of Liège, B-5030 Gembloux, Belgium; ⁴⁰Department of Plant Biology, Faculty of Sciences, University of Yaounde I, Yaounde, BP 812, Cameroon; ⁴¹National Herbarium, Yaoundé, BP 20818, Cameroon; ⁴²CREAF, Universitat Autònoma de Barcelona, Cerdanyola del Vallès 08193, Spain; ⁴³Universidad Técnica Particular de Loja, Loja 1101608, Ecuador; ⁴⁴Mount Holyoke College Botanic Garden, South Hadley, MA 01075; ⁴⁵Department of Biological Sciences, Faculty of Science, King Abdulaziz University, Jeddah 21589, Saudi Arabia; ⁴⁶Royal Botanic Garden Edinburgh, Edinburgh EH3 5LR, United Kingdom; ⁴⁷World Agroforestry Centre, East and Southern Africa Region, Woodlands, Lusaka, Zambia; ⁴⁸Department of Plant Sciences, University of Oxford, Oxford OX1 3RB, United Kingdom; ⁴⁹Department of Plant Systematics, University of Bayreuth, 95440 Bayreuth, Germany; ⁵⁰Plant Ecology, Albrecht von Haller Institute of Plant Sciences, Georg August University Göttingen, 37073 Göttingen, Germany; ⁵¹Biodiversity Parks Programme, Centre for Environmental Management of Degraded Ecosystems, University of Delhi, Delhi 110007, India; ⁵²Faculty of Forestry, Universiti Putra Malaysia, Serdang-43400, Selangor, Malaysia; ⁵³Department of Forest Science, Tokyo University of Agriculture, Tokyo 156-8502, Japan; ⁵⁴UNICAMP, Cidade Universitária Zeferino Vaz-Barão Geraldo, Campinas, Sao Paulo 13083-970, Brazil; ⁵⁵Geographic Information Systems and Remote Sensing Department, Kerala Forest Research Institute, Peechi, Kerala 680653, India; ⁵⁶Integrative Research Center, The Field Museum, Chicago, IL 60605; ⁵⁷Herbarium Bogoriense, Research Center for Biology, Indonesian Institute of Sciences, Cibinong 16911, Indonesia; ⁵⁸Computational and Applied Vegetation Ecology (CAVElab), Department of Environment, Faculty of Bioscience Engineering, Ghent University, Coupure Links 653, B-9000 Ghent, Belgium; ⁵⁹Trinity Centre for Biodiversity Research, Trinity College, The University of Dublin, Dublin 2, Ireland; ⁶⁰Department of Systematic and Evolutionary Botany, University of Zurich, 8008 Zurich, Switzerland; ⁶¹Agteca-Amazonica, Santa Cruz, Bolivia; ⁶²Department of Biological Sciences, Macquarie University, North Ryde, NSW 2109, Australia; ⁶³National Herbarium of New South Wales, Royal Botanic Gardens and Domain Trust, Sydney, NSW 2000, Australia; ⁶⁴Centre for Tropical Environmental and Sustainability Science and College of Science and Engineering, James Cook University, Cairns, QLD 4878, Australia; ⁶⁵School of Life Sciences, University of KwaZulu-Natal, Scottsville 3209, South Africa; ⁶⁶Department of Plant Biology, College of the Atlantic, Bar Harbor, ME 04609; ⁶⁷The RSPB Centre for Conservation Science, Sandy, Bedfordshire SG19 2DL, United Kingdom; ⁶⁸School of Geography, University of Leeds, Leeds LS2 9JT, United Kingdom; ⁶⁹Herbarium, Royal Botanic Gardens Kew, Richmond, Surrey TW9 3AB, United Kingdom; ⁷⁰Facultad de Ciencias Forestales y Ambientales, Universidad de Los Andes, Merida S101-A, Venezuela; ⁷¹Key Laboratory of Forest Ecology and Environment of State Forestry Administration, Institute of Forest Ecology, Environment and Protection, Chinese Academy of Forestry, Beijing 100091, China; ⁷²Department of Bioscience, Aarhus University, 8600 Silkeborg, Denmark; ⁷³Faculty of Bioresources and Food Sciences, Universiti Sultan Zainal Abidin, 20300, Besut Campus, Terengganu, Malaysia; ⁷⁴Faculty of Forestry, Universitas Gadjah Mada, Yogyakarta 55281, Indonesia; ⁷⁵School of Biological Sciences, Universiti Sains Malaysia, 11800 Penang, Malaysia; ⁷⁶Centre for Marine and Coastal Studies, Universiti Sains Malaysia, 11800 Penang, Malaysia; ⁷⁷CIRCLE, University of York, York YO10 5NG, United Kingdom; ⁷⁸Flamingo Land, North Yorkshire YO17 6UX, United Kingdom; ⁷⁹Tropical Forests and People Research Centre, University of the Sunshine Coast, QLD 4556, Australia; ⁸⁰College of African Wildlife Management, Department of Wildlife Management, Moshi, Tanzania; ⁸¹Museu Paraense Emílio Goeldi, Belém PA, 66040-170, Brazil; ⁸²Departamento de Ecología y Recursos Naturales, Facultad de Ciencias, Universidad Nacional Autónoma de México, Ciudad de México, C.P. 04510, Mexico; ⁸³Center for Biosciences, Federal University of Pernambuco, Cidade Universitária, Recife PE, 50670-901, Brazil; ⁸⁴Herbario Loja, Universidad Nacional de Loja, Loja EC110103, Ecuador; ⁸⁵Commission des Forêts d'Afrique Centrale (COMIFAC), BP 20818 Yaoundé, Cameroon; ⁸⁶Department of Ecology, Institute of Bioscience, University of São Paulo, 05508-900 São Paulo, SP, Brazil; ⁸⁷Programa de Pós-Graduação em Ecologia, Conservação e Manejo da Vida Silvestre (ECMVS), IBAM-Instituto Bem Ambiental, Belo Horizonte-Minas Gerais, 30360-310, Brazil; ⁸⁸Root and Soil Biology Laboratory, Department of Botany, Bharathiar University, Coimbatore 641 046, India; ⁸⁹Laboratorio de Ecología Terrestre, Centro de Investigación y de Estudios Avanzados del Instituto Politécnico Nacional (CINVESTAV), C.P. 927310 Mérida, México; ⁹⁰Department of Biology, Universitas Bangka Belitung (UBB), Kampus Merawang, Kepulauan Bangka Belitung 33172, Indonesia; ⁹¹Programa de Pós Graduação em Ecologia e Conservação, Universidade do Estado de Mato Grosso-UNEMAT, 78200-000 Cáceres, Mato Grosso, Brazil; ⁹²Faculty of Forestry, Universitas Sumatera Utara, Medan 20155, Indonesia; ⁹³Department of Biodiversity, Evolution and Ecology of Plants, Biocentre Klein Flottbek, University of Hamburg, D-22609 Hamburg, Germany; ⁹⁴Institut Sophia Agrobiotech, 06903 Sophia Antipolis Cedex, France; ⁹⁵World Resource Institute, Washington, DC 20002; ⁹⁶Centre for Mountain Ecosystem Studies, Kunming Institute of Botany, Chinese Academy of Sciences, Kunming 650201, China; ⁹⁷Departamento de Engenharia Florestal, Universidade de Brasília, 70910-900, Brasília, Distrito Federal, Brazil; ⁹⁸Nicholas School of the Environment, Duke University, Durham, NC 27708; ⁹⁹College of Biological Sciences, University of Minnesota, St. Paul, MN 55108; ¹⁰⁰International Institute of Information Technology, Gachibowli, Hyderabad, Telangana 500032, India; ¹⁰¹Sigur Nature Trust, Chadapatti, Masinagudi PO Nilgiris, TN 643223, India; ¹⁰²Bureau Waardenburg, 4100 AJ Culemborg, The Netherlands; ¹⁰³Programa de Pós-Graduação em Ecologia e Conservação da Biodiversidade, Universidade Estadual de Santa Cruz, Ilhéus, Bahia 45662-900, Brazil; ¹⁰⁴Laboratório de Restinga e Floresta Atlântica, Universidade Federal do Espírito Santo, BR-101 São Mateus, Brazil; ¹⁰⁵Tropical Biodiversity Section, MUSE - Museo delle Scienze, 38122 Trento, Italy; ¹⁰⁶Cibodas Botanic Gardens, Indonesian Institute of Sciences (LIPI), Cipanas, Cianjur, West Java 43253, Indonesia; ¹⁰⁷Department of Geography and Geology, University of Turku, Turku, 20014 Turun yliopisto, Finland; ¹⁰⁸School of Environmental and Natural Resource Sciences, Faculty of Science and Technology, Universiti Kebangsaan Malaysia, 43600 UKM Bangi, Selangor, Malaysia; ¹⁰⁹Instituto Federal de Educação, Ciência e Tecnologia do Espírito Santo, São João de Petrópolis, Santa Teresa, 29660-000, Brazil; ¹¹⁰Department of Evolutionary Biology and Environmental Studies, University of Zurich, CH-8057 Zurich, Switzerland; ¹¹¹Departamento de Sistemática e Ecologia, Universidade Federal da Paraíba, 58051-900, Brazil; ¹¹²Remote Sensing Department (DSR), National Institute for Space Research (INPE), São José dos Campos, São Paulo 12227-010, Brazil; ¹¹³Institute of Biodiversity, Animal Health and Comparative Medicine, University of Glasgow, Glasgow G12 8QQ, United Kingdom; ¹¹⁴Center for Development Research (ZEF), University of Bonn, 53113 Bonn, Germany; ¹¹⁵Chair of Nature Conservation and Landscape Ecology, University of Freiburg, 79085 Freiburg im Breisgau, Germany; ¹¹⁶H.J. Andrews Experimental Forest, Blue River, OR 97413; ¹¹⁷Faculty of Environmental Sciences and Natural Resource Management, Norwegian University of Life Sciences, 1432 Ås, Norway; ¹¹⁸Cirad-ES, Campus International de Baillarguet, TA C-105/D 34398 Montpellier Cedex 5, France; ¹¹⁹Departamento de Ecologia, Universidade Federal do Rio Grande do Norte, Natal, CEP 59078-970, Brazil; ¹²⁰World Wildlife Fund Thailand, Bangkok 10400, Thailand; ¹²¹Africa and Madagascar Department, Missouri Botanical Garden, St. Louis, MO 63110; ¹²²Federal University of Technology-Paraná, 86812-460, Apucarana, PR, Brazil; ¹²³Biodiversity Parks Programme, Centre for Environmental Management of Degraded Ecosystems, University of Delhi, Delhi 110007, India; ¹²⁴Departamento de Botânica, Cidade Universitária, Universidade Federal de Pernambuco, Recife, CEP, 50670-901, Brazil; ¹²⁵Key Laboratory of Tropical Plant Resources and Sustainable Use, Xishuangbanna Tropical Botanical Garden, Chinese

Academy of Sciences, Menglun Town, Mengla County, Yunnan Province 666303, China; ^{lIIII}Department of Plant Sciences, University of Cambridge, Cambridge CB2 3EA, United Kingdom; ^{mIIIIIIII}Department of Food and Resource Economics, University of Copenhagen, 1165 Copenhagen, Denmark; ^{nIIIIIIII}Department of Biological Sciences, Washington State University, Vancouver, WA 98686; ^{oIIIIIIII}Netherlands Food and Consumer Product Safety, Authority, National Reference Centre, 6700HC Wageningen, The Netherlands; ^{pIIIIIIII}Research Institute for Sustainable Humanosphere, Kyoto University, Uji, Kyoto 611-0011, Japan; ^{qIIIIIIII}Science, Technology and International Cooperation Department, Vietnam National University of Forestry, Hanoi 144, Vietnam; ^{rIIIIIIII}Department of Ecology and Evolutionary Biology, University of Michigan, Ann Arbor, MI 48109; ^{sIIIIIIII}Department of Geography, University of Bergen, N-5020 Bergen, Norway; ^{tIIIIIIII}Department of Forestry and Wood Technology, The Federal University of Technology, P.M.B. 704 Akure, Nigeria; ^{uIIIIIIII}Arnold Arboretum, Harvard University, Boston, MA 02130; ^{vIIIIIIII}Department of Biological Sciences, National University of Singapore, Singapore 117543, Singapore; ^{wIIIIIIII}Brown University, Providence, RI 02912; ^{xIIIIIIII}School of Natural Sciences and Psychology, Liverpool John Moores University, Liverpool L3 3AF, United Kingdom; ^{yIIIIIIII}Institute for Biodiversity and Ecosystem Dynamics, University of Amsterdam, 1098 Amsterdam, The Netherlands; ^{zIIIIIIII}Instituto Politécnico Nacional, CIIDIR-Unidad Oaxaca, Santa Cruz Xoxocotlán, CP 71230, Oaxaca, Mexico; ^{aaIIIIIIII}Department of Floodplain Ecology, Institute of Geography and Geoecology, Karlsruhe Institute of Technology, D-76437 Rastatt, Germany; ^{bbIIIIIIII}College of Agriculture and Forestry, Hainan University, Meilan Qu Haikou Shi, 570228, Hainan Province, China; ^{ccIIIIIIII}Biosciences, Université Félix Houphouët-Boigny, Abidjan 22, Ivory Coast; ^{ddIIIIIIII}Institute of Arts and Sciences, Far Eastern University, Manila, Philippines; and ^{eeIIIIIIII}Department of Biology, American University of Beirut, Riad El-Solh, Beirut 1107 2020, Lebanon

- Cavender-Bares J, Ackerly DD, Hobbie SE, Townsend PA (2016) Evolutionary legacy effects on ecosystems: Biogeographic origins, plant traits, and implications for management in the era of global change. *Annu Rev Ecol Syst* 47:433–462.
- Donoghue MJ (2008) A phylogenetic perspective on the distribution of plant diversity. *Proc Natl Acad Sci USA* 105:11549–11555.
- Weigelt P, et al. (2015) Global patterns and drivers of phylogenetic structure in island floras. *Sci Rep* 5:12213.
- Morley RJ (2008) Interplate dispersal paths for megathermal angiosperms. *Perspect Plant Ecol Evol Syst* 6:5–20.
- Pennington RT, Dick CW (2004) The role of immigrants in the assembly of the South American rainforest tree flora. *Philos Trans R Soc Lond B Biol Sci* 359:1611–1622.
- Slik JWF, et al. (2015) An estimate of the number of tropical tree species. *Proc Natl Acad Sci USA* 112:7472–7477, and correction (2015) 112:E4628–E4629.
- Gentry AH (1988) Changes in plant community diversity and floristic composition on environmental and geographical gradients. *Ann Mo Bot Gard* 75:1–34.
- Dexter KG, et al. (2015) Floristics and biogeography of vegetation in seasonally dry tropical regions. *Int For Rev* 17:10–22.
- Holt BG, et al. (2013) An update of Wallace's zoogeographic regions of the world. *Science* 339:74–78.
- Webb CO, et al. (2002) Phylogenies and community ecology. *Annu Rev Ecol Syst* 33:475–505.
- Procheş Ş, Ramdhani S, Perera SJ, Ali JR, Gairola S (2015) Global hotspots in the present-day distribution of ancient animal and plant lineages. *Sci Rep* 5:15457.
- Takhtajan AL (1986) *The Floristic Regions of the World* (Univ of California Press, Berkeley).
- Chang HT (1994) An outline on the regionalisation of the global flora. *Acta Sci Nat Univ Sunyatseni* 33:73–80.
- Cox CB (2001) The biogeographic regions reconsidered. *J Biogeogr* 28:511–523.
- McLoughlin S (2001) The breakup history of Gondwana and its impact on pre-Cenozoic floristic provincialism. *Aust J Bot* 49:271–300.
- McClellan CJ, et al. (2005) African plant diversity and climate change. *Ann Mo Bot Gard* 92:139–152.
- Anhuf D, et al. (2006) Paleo-environmental change in Amazonian and African rainforest during the LGM. *Palaeogeogr Palaeoclimatol Palaeoecol* 239:510–527.
- Banda-R K, et al.; DRYFLOR (2016) Plant diversity patterns in neotropical dry forests and their conservation implications. *Science* 353:1383–1387.
- Ratnam J, Tomlinson KW, Rasquinha DN, Sankaran M (2016) Savannas of Asia: Antiquity, biogeography, and an uncertain future. *Philos Trans R Soc Lond B Biol Sci* 371:20150305.
- Hall R (2001) Cenozoic reconstructions of SE Asia and the SW Pacific: Changing patterns of land and sea. *Faunal and Floral Migrations and Evolution in SE Asia-Australasia*, eds Metcalfe I, Smith JMB, Morwood M, Davidson ID (Swets & Zeitlinger, Lisse, The Netherlands), pp 35–56.
- Klaus S, Morley RJ, Plath M, Zhang YP, Li JT (2016) Biotic interchange between the Indian subcontinent and mainland Asia through time. *Nat Commun* 7:12132.
- Qian H, Jin Y, Ricklefs RE (2017) Phylogenetic diversity anomaly in angiosperms between eastern Asia and eastern North America. *Proc Natl Acad Sci USA* 114:11452–11457.
- Primack RB, Corlett RT (2005) *Tropical Rainforests: An Ecological and Biogeographical Comparison* (Wiley-Blackwell, Hoboken, NJ).
- Corlett RT, Primack RB (2006) Tropical rainforests and the need for cross-continental comparisons. *Trends Ecol Evol* 21:104–110.
- APG-III (2009) An update of the angiosperm phylogeny group classification for the orders and families of flowering plants: APG III. *Bot J Linn Soc* 161:105–121.
- APG-IV (2016) An update of the angiosperm phylogeny group classification for the orders and families of flowering plants: APG IV. *Bot J Linn Soc* 181:1–20.
- Zanne AE, et al. (2014) Three keys to the radiation of angiosperms into freezing environments. *Nature* 506:89–92.
- Webb CO, Ackerly DD, Kembel SW (2008) Phylocom: Software for the analysis of phylogenetic community structure and trait evolution. *Bioinformatics* 24:2098–2100.
- Magallón S, Gómez-Acevedo S, Sánchez-Reyes LL, Hernández-Hernández T (2015) A metacalibrated time-tree documents the early rise of flowering plant phylogenetic diversity. *New Phytol* 207:437–453.
- Ward JH, Jr (1963) Hierarchical grouping to optimize an objective function. *J Am Stat Assoc* 58:236–244.
- Clopper C, Pearson ES (1934) The use of confidence or fiducial limits illustrated in the case of the binomial. *Biometrika* 26:404–413.
- Hijmans RJ, Cameron SE, Parra JL, Jones PG, Jarvis A (2005) Very high resolution interpolated climate surfaces for global land areas. *Int J Climatol* 25:1965–1978.