

SCIENTIFIC REPORTS



OPEN

Cigarette smoke extract profoundly suppresses TNF α -mediated proinflammatory gene expression through upregulation of ATF3 in human coronary artery endothelial cells

Received: 14 October 2016
Accepted: 29 November 2016
Published: 06 January 2017

Jack E. Teasdale¹, Georgina G. J. Hazell¹, Alasdair M. G. Peachey¹, Graciela B. Sala-Newby¹, Charles C. T. Hindmarch^{2,3}, Tristan R. McKay⁴, Mark Bond¹, Andrew C. Newby¹ & Stephen J. White⁴

Endothelial dysfunction caused by the combined action of disturbed flow, inflammatory mediators and oxidants derived from cigarette smoke is known to promote coronary atherosclerosis and increase the likelihood of myocardial infarctions and strokes. Conversely, laminar flow protects against endothelial dysfunction, at least in the initial phases of atherogenesis. We studied the effects of TNF α and cigarette smoke extract on human coronary artery endothelial cells under oscillatory, normal laminar and elevated laminar shear stress for a period of 72 hours. We found, firstly, that laminar flow fails to overcome the inflammatory effects of TNF α under these conditions but that cigarette smoke induces an anti-oxidant response that appears to reduce endothelial inflammation. Elevated laminar flow, TNF α and cigarette smoke extract synergise to induce expression of the transcriptional regulator activating transcription factor 3 (ATF3), which we show by adenovirus driven overexpression, decreases inflammatory gene expression independently of activation of nuclear factor- κ B. Our results illustrate the importance of studying endothelial dysfunction *in vitro* over prolonged periods. They also identify ATF3 as an important protective factor against endothelial dysfunction. Modulation of ATF3 expression may represent a novel approach to modulate proinflammatory gene expression and open new therapeutic avenues to treat proinflammatory diseases.

The haemodynamic environment plays an important contributing role in the initiation and progression of atherosclerosis, with disease developing and progressing most rapidly in regions of oscillatory, low and disturbed wall shear stress^{1–4}. Underlying this response is the mechanosensitivity of endothelial cells, whose behaviour is profoundly modulated by the shear environment to which they are exposed. Athero-prone flow (disturbed flow pattern/oscillatory shear stress/low average wall shear stress) provokes endothelial dysfunction, reducing the bio-availability of nitric oxide, while increasing oxidant stress, the magnitude of response to inflammatory cytokines, rates of apoptosis and permeability. The athero-protective phenotype that endothelial cells adopt in normal physiological laminar shear stress (12–16 dynes/cm² in the coronary circulation^{5–7}) is predominantly mediated by increased expression of KLF2 and KLF4, and the activation of Nrf2, all of which combine to activate a program of gene expression and epigenetic changes that reduce endothelial dysfunction^{8,9}. In addition, we have reported that endothelial cells cultured under elevated shear stress (75 dynes/cm²) similar to that experienced overlying

¹School of Clinical Sciences, University of Bristol, Bristol Royal Infirmary, Bristol, BS2 8HW, UK. ²Department of Biomedical and Molecular Sciences, Queen's University, Kingston, ON, Canada, K7L 3N6. ³Department of Physiology, Faculty of Medicine, University of Malaya, 50603, Kuala Lumpur, Malaysia. ⁴School of Healthcare Sciences, Manchester Metropolitan University, Manchester M1 5GD, UK. Correspondence and requests for materials should be addressed to S.J.W. (email: Stephen.white@MMU.ac.uk)

a stenotic atherosclerotic plaque adopt a unique phenotype¹⁰, which may therefore react in a different way to mediators of endothelial dysfunction. Under elevated shear stress, endothelial cells amplify many of the features observed at normal physiological flow, further increasing the expression of KLF2 and KLF4¹⁰, however they have a distinctive transcriptomic and proteomic signature¹⁰ and S. White, unpublished data).

TNF α imposes a significant pro-inflammatory effect on endothelial cells. It induces the expression of adhesion molecules (e.g. VCAM1, ICAM1, E-selectin) and chemokines (e.g. MCP1/CCL2 and fractalkine/CX3CL1)¹¹, predominantly through activation of transcription factor NF κ B^{12,13}. TNF α also increases the production of reactive oxygen species (ROS), perpetuating endothelial dysfunction. The responses to TNF α and other inflammatory mediators are ameliorated by shear stress, with KLF2 and Nrf2 inhibition of TNF α activity being part of the anti-inflammatory effects of laminar shear stress^{8,14,15}. Nevertheless, endothelial cells over stenotic atherosclerotic plaques show markers of inflammation¹⁶, including increased adhesion molecule expression^{17,18}, implying that the protective effects of flow may be over-ridden in advanced atherosclerosis.

Cigarette use also induces endothelial dysfunction, either indirectly by elevating circulating inflammatory cytokines, including TNF α , or directly by increasing oxidant stress^{19–22}. We have previously demonstrated that fresh aqueous cigarette smoke extract (CSE) induces a stress response in human coronary artery endothelial cells, activating transcription factor Nrf2 and increasing the expression of cytochrome p450 subunits²³.

In this report we demonstrate the use of our improved model for studying the prolonged effects of oscillatory, physiological and elevated flow. We focus on the interaction of shear stress with the effects of TNF α and CSE as a model of endothelial dysfunction, which contributes to the development of atherosclerosis, our intention being to identify new signalling interactions that might be useful ultimately for future therapy or as biomarkers. Consistent with this aim, we document the shear, TNF α and CSE-dependent upregulation of transcription factor ATF3, identifying a negative-feedback loop that limits proinflammatory gene expression.

Results

Effects of flow and cigarette smoke extract (CSE) on TNF α induced gene expression in different, sustained flow environments.

We sought to use treatments with TNF α and cigarette smoke extract (CSE), alone or in combination, to mimic pathological effects on human coronary artery endothelial cells (HCAECs). We investigated the effects of sustained exposure under oscillatory (OSS), normal laminar (15 dynes/cm² - LSS) or elevated laminar shear stress (75 dynes/cm² - ESS). OSS models some components of athero-prone flow, LSS models athero-protective flow and ESS models flow overlying stenotic plaques. HCAECs were exposed to shear stress for 24 hours before 3 treatments of 5 ng/ml of TNF α , 10% v/v CSE, or the combination of both treatments were applied to the cells, 16 hours apart (Fig. 1H and supplementary data). The concentrations of mRNAs or proteins were measured 16 hours after the final treatment (48 hours of exposure to stimuli). This protocol allowed the HCAECs time to adapt to the flow environment before treatments were applied and captured the response to sustained exposure to these insults. In agreement with previous findings, TNF α significantly increased the expression of VCAM1 and other intercellular adhesion molecules ICAM1 and E-selectin, as well as cytokines CCL2 and CX3CL1 and the NF κ B feed-back regulator, I κ B α (Fig. 1A–G). The effect on VCAM-1 was confirmed at the protein level (Fig. 1B). Multiple studies have demonstrated that normal laminar shear stress reduces the magnitude of proinflammatory gene expression induced by TNF α treatment^{24–28}. We failed to show a significant effect of normal laminar shear stress (LSS) on TNF α -regulated genes, possibly because of the sustained exposure to TNF α . However, we cannot rule out a subtle effect of LSS on TNF α -regulated genes, because the concurrent testing of multiple experimental conditions reduces the power to identify small changes in gene expression. CSE did not increase the expression of any of the pro-inflammatory genes investigated under any flow condition. Surprisingly, however, CSE antagonised the induction of these genes by TNF α under sustained LSS or ESS (Fig. 1A–G). We concluded, firstly, that sustained exposure to TNF α overwhelmed the ability of flow to reduce pro-inflammatory activation. Secondly, CSE appeared to evoke a response that suppressed expression of some pro-inflammatory genes, particularly under normal physiological or elevated laminar shear stress. By contrast, a few of the TNF α responsive genes assayed were not down-regulated by CSE. For example expression of protease inhibitor 3 (PI3) or the p65/RelA subunit of NF- κ B were stimulated by TNF α but not suppressed by CSE (Supplementary Figures 4, 5).

Effects of TNF α and CSE on the expression of shear responsive genes.

Laminar shear stress has been shown to maintain high level expression of multiple athero-protective genes in endothelial cells through induction of transcription factors Kruppel-like factor-2 and 4 (KLF2, KLF4)^{8,29}. We confirmed these observations in our experiments. For example, KLF2 expression was significantly enhanced in LSS and ESS compared to OSS (13- and 20-fold, respectively Fig. 2A). Similar results were found for KLF4 (33- and 100-fold, respectively, Fig. 2B) and for shear stress responsive genes thrombomodulin (THBD), endothelial nitric oxide synthase (NOS3) and nephroblastoma overexpressed (NOV) (Fig. 2C–F). The effect on the mRNA expression of thrombomodulin (THBD) correlated with the protein level (Fig. 2D). The effects of ESS always tended to be greater than LSS but this was only statistically significant for THBD and NOV (Fig. 2C,D,F). Most interestingly, although sustained treatment with TNF α did not affect the upregulation of either KLF2 or KLF4 mRNA, it significantly reduced the expression of THBD mRNA and protein, NOS3 and NOV mRNA. This implies that TNF α can antagonise the transcriptional responses to KLFs, without directly affecting their expression. Sustained treatment with CSE did not affect the upregulation of KLF2 or KLF4 mRNA either, nor did it rescue the TNF α suppression of shear-regulated genes. The anti-inflammatory effects of CSE are therefore unlikely to be mediated through KLF2 or KLF4-dependent mechanisms.

CSE upregulates the expression of Nrf2 responsive genes at all shear rates. The transcription factor, Nrf2, is central to the antioxidant response in endothelial cells^{15,30–32}, having been shown to increase the

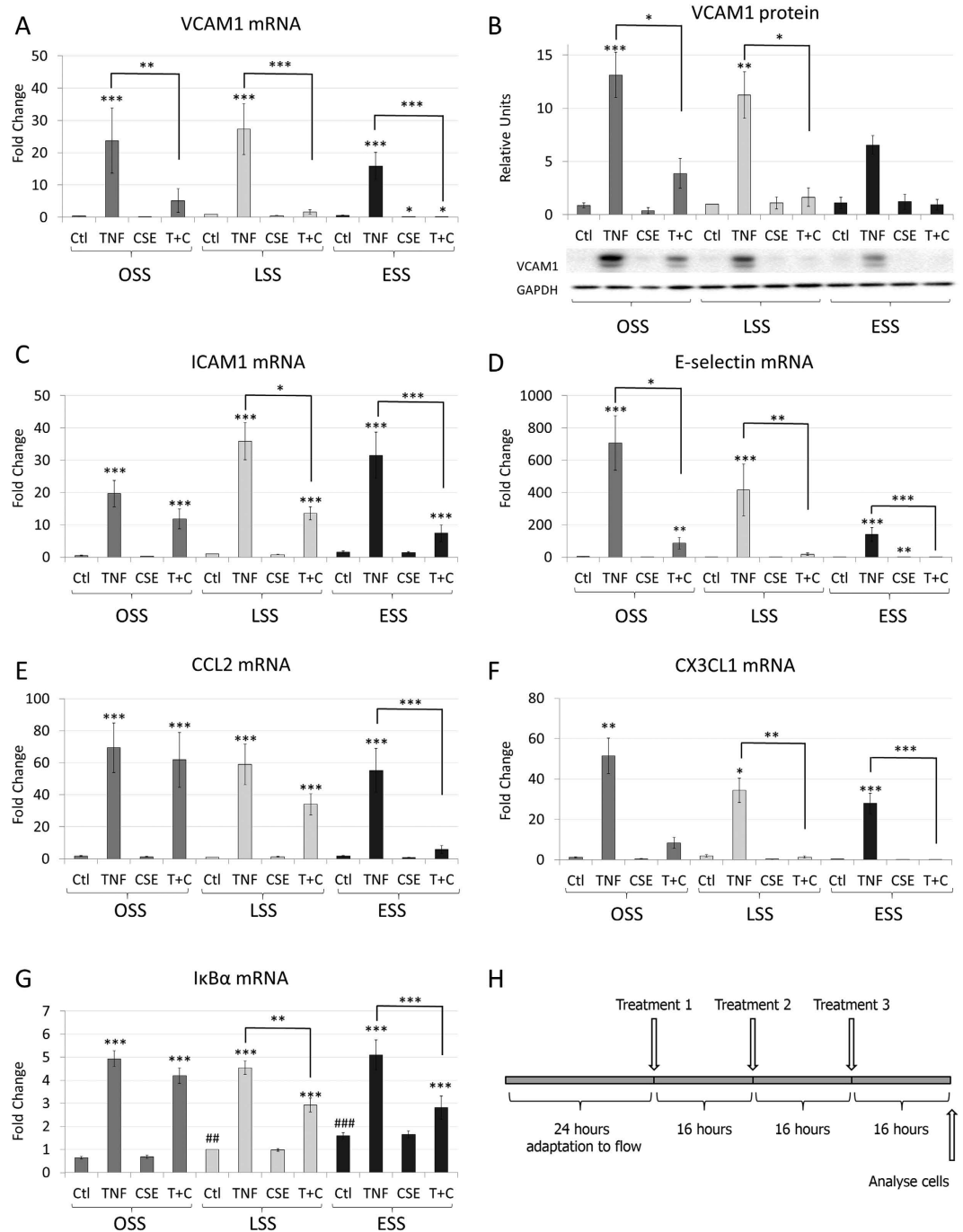


Figure 1. Effects of flow and cigarette smoke extract (CSE) on TNF α induced gene expression. The mRNA expression of (A) VCAM1, (C) ICAM1, (D) E-selectin, (E) CCL2, (F) CX3CL1 and (G) I κ B α , (n = 6 separate batches of HCAECs); or (B) protein expression of VCAM-1 (n = 3 separate batches of HCAECs). HCAEC were exposed to 5 ng/ml TNF α , 10% CSE or TNF α and CSE together (T + C) under OSS, LSS or ESS conditions, as illustrated schematically (H). Changes are expressed as mean fold change against LSS control \pm S.E.M. *p < 0.05; **p < 0.01, ***p < 0.001 significant vs control for that shear stress, or other indicated comparison; #P < 0.05 vs OSS control

expression of a group of genes that includes heme oxygenase 1 (HMOX1)²³. Administration of cigarette smoke extract (CSE) significantly increased HMOX1 expression to a similar extent at mRNA and protein levels in all the shear environments we tested (Fig. 3A,B). CSE also increased the expression of the other antioxidant response genes (which are validated Nrf2 targets^{23,33}) in HCAECs and in most cases the effects were amplified at the higher shear rates. By contrast, TNF α alone had no effect on any Nrf2 target gene studied at any shear rate (Fig. 3A–E). However, the addition of TNF α to CSE significantly enhanced the expression of sulfiredoxin 1 (SRXN1) and

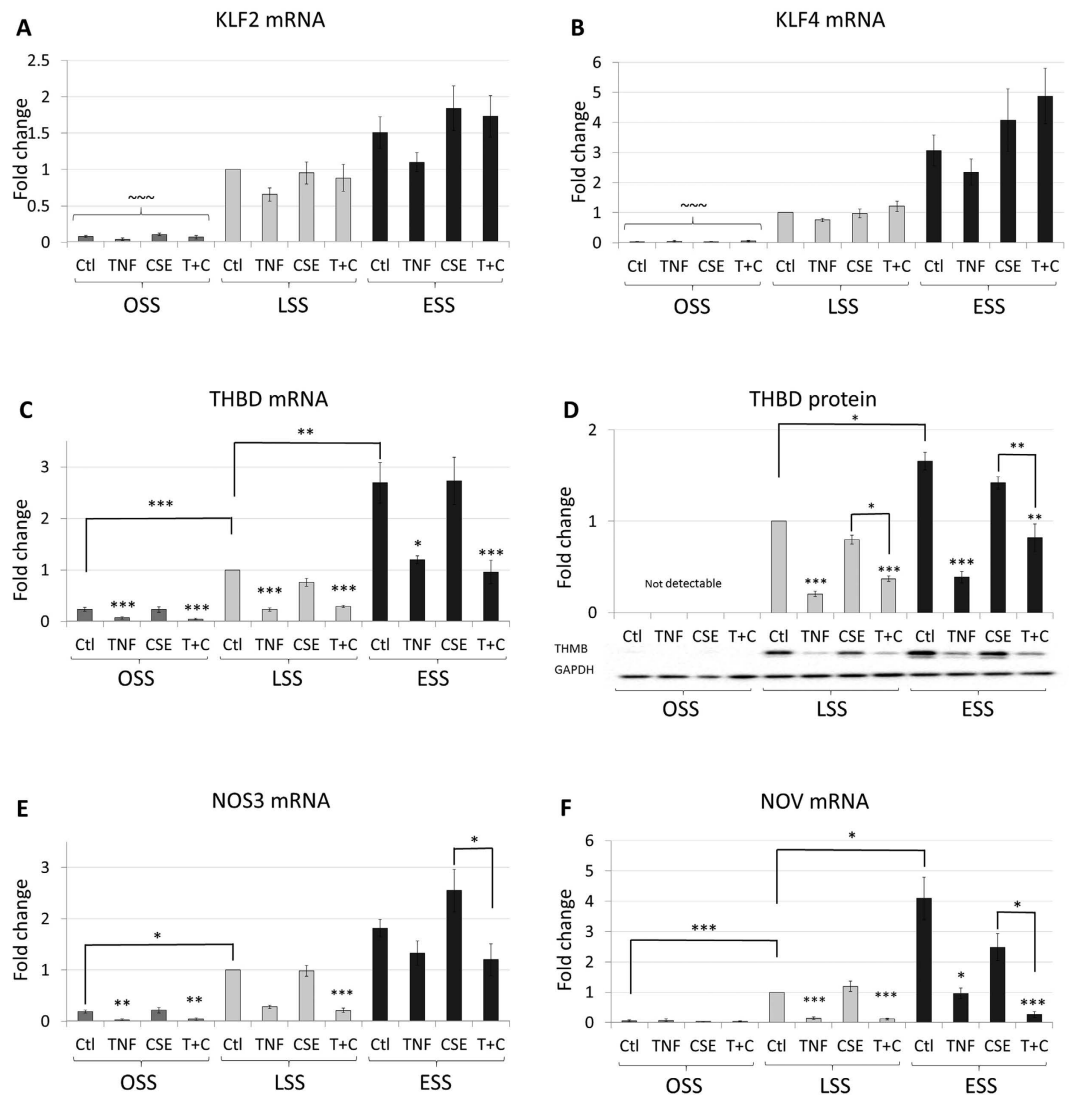


Figure 2. $\text{TNF}\alpha$, but not CSE, suppress the expression of shear-responsive genes. Changes in mRNA expression ($n = 6$ batches) of (A) KLF2, (B) KLF4, (C) THBD, (E) NOS3, (F) NOV or (D) THBD protein ($n = 3$ batches) were measured in HCAECs exposed to 5 ng/ml $\text{TNF}\alpha$, 10% CSE or $\text{TNF}\alpha$ and CSE together (T + C) under OSS, LSS or ESS, expressed as mean fold change against control \pm S.E.M. * $p < 0.05$; ** $p < 0.01$, *** $p < 0.001$ significant vs control for that shear stress, or indicated comparison; ~~~ $P < 0.001$ vs LSS and ESS (all conditions).

oxidative stress induced growth inhibitor 1 (OSGIN1) at ESS. The anti-inflammatory effects of CSE could therefore be mediated by an Nrf2-dependent process.

Shear stress, $\text{TNF}\alpha$ and CSE modulate ATF3 expression. Transcription factor, ATF3, was previously shown to inhibit Toll-like receptor 4 (TLR4)-stimulated inflammatory response by repression of $\text{NF}\kappa\text{B}$ responsive genes in macrophages³⁴, potentially by localising inhibitory co-factors at the promoter. Therefore we investigated whether ATF3 expression was modulated in our system and could act as a suppressor of pro-inflammatory gene induction. LSS did not significantly increase ATF3 mRNA expression but ESS increased it 3.7-fold compared to LSS (Fig. 4A, note the logarithmic scale). CSE did not increase ATF3 expression at OSS or LSS but increased it at ESS (an additional 5-fold above ESS control Fig. 4A). $\text{TNF}\alpha$ tended to increase ATF3 expression at all shear stresses and this was significant at OSS and LSS (6.5-fold increase). CSE and $\text{TNF}\alpha$ produced synergistic effects at LSS and ESS (approximately 10-fold increases above CSE alone Fig. 4A). Hence, CSE, $\text{TNF}\alpha$ and ESS were all necessary to maximise the expression ATF3 in HCAECs. Importantly, the highest level of ATF3 expression (175-fold above LSS alone and 185-fold increase over OSS) was observed under the same conditions where pro-inflammatory gene expression showed the greatest inhibition (Fig. 1).

To investigate the regulation of ATF3, we used adenoviral overexpression of Nrf2 in static cultures of HCAECs. Adenoviral Nrf2 overexpression increased ATF3 expression. Consistent with the experiments under

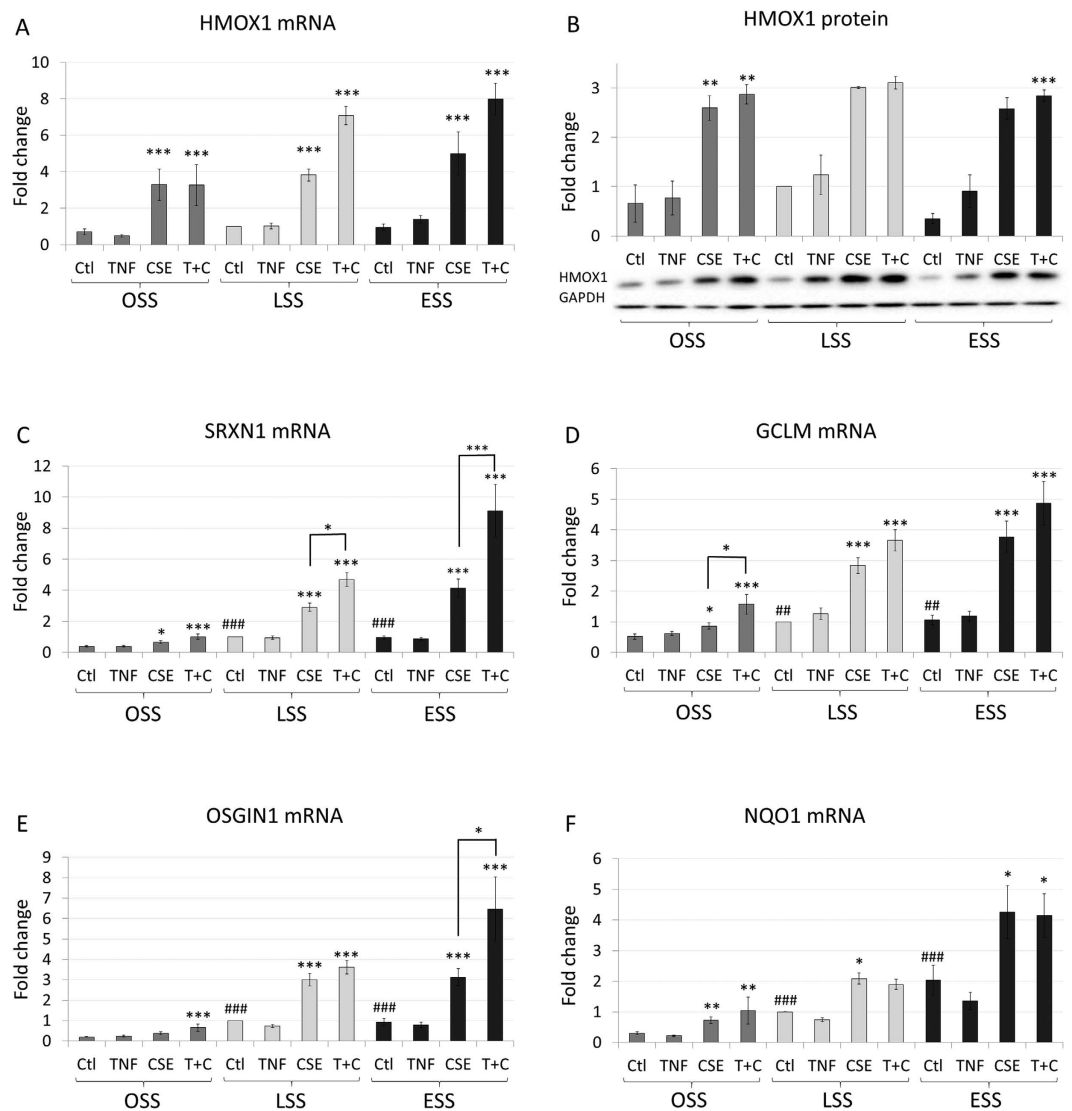


Figure 3. CSE increases the expression of Nrf2 responsive genes. Changes in mRNA expression of (A) HMOX1, (C) SRXN1, (D) GCLM, (E) OSGIN1, (F) NQO1 (n = 6 batches) or (B) HMOX1 protein (n = 3 batches) in HCAECs exposed to 5 ng/ml TNF α , 10% CSE or TNF α and CSE together (T + C) under OSS, LSS or ESS conditions. Changes are expressed as mean fold change against LSS control \pm S.E.M. *p < 0.05; **p < 0.01, ***p < 0.001 significant vs control for that shear stress, or indicated comparison; #P < 0.05 vs OSS control.

flow (Fig. 4A), TNF α also stimulated ATF3 expression in static cultures (Fig. 4B). The effects of Nrf2 overexpression and TNF α stimulation were less than additive.

ATF3 reduces proinflammatory gene expression without reducing NF κ B activation, nuclear entry, DNA binding or activation. We hypothesised that ATF3 may play a role in the down-regulation of TNF α stimulated pro-inflammatory genes. Consistent with this, adenoviral-mediated ATF3 overexpression significantly reduced the level of VCAM1 expression when HCAECs were stimulated with TNF α in static culture (Fig. 5A). ATF3 overexpression also altered the morphology of HCAECs, inducing an elongation, with no sign of induction of cell stress or apoptosis (Supplementary Figure 6). To investigate whether ATF3 interfered with NF κ B activation or activity, we created a lentiviral-based NF κ B luciferase reporter³⁵ expression construct in endothelial cell line EA.hy926 (NF-EA.hy926). In NF-EA.hy926 cells, ATF3 overexpression again inhibited the TNF α upregulation of VCAM1 (Fig. 5B), but there was no effect of ATF3 overexpression on the TNF α -dependent upregulation of luciferase (Fig. 5C), indicating that ATF3 overexpression did not prevent NF κ B activation, nuclear entry, DNA binding and ability to activate transcription of the reporter.

Discussion

Our model allowed HCAEC to adapt to their shear environment for 24 hours before treatment. Under these conditions, repeated exposures to TNF α over a 48 hour period upregulated the expression of a panel of NF κ B responsive genes. Importantly, the anti-inflammatory effects of laminar shear that have been reported at shorter time points

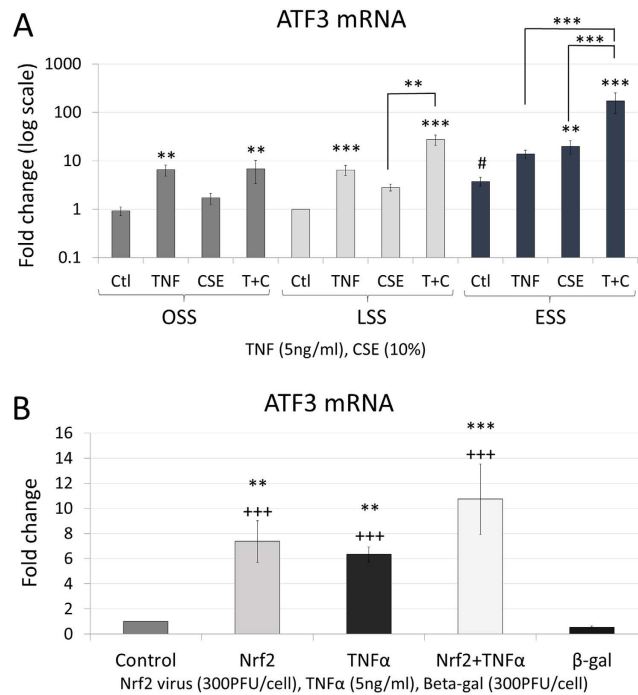


Figure 4. Shear stress, TNF α and CSE all increase ATF3 expression. Changes in (A) ATF3 mRNA expression in HCAECs exposed to 5 ng/ml TNF α , 10% CSE or TNF α and CSE together (T + C) under OSS, LSS or ESS, expressed as mean fold change against control \pm S.E.M. * p < 0.05; ** p < 0.01, *** p < 0.001 significant vs control for that shear stress, or indicated comparison; # p < 0.05 vs OSS control; n = 6 batches. (B) Regulation of ATF3 mRNA expression in HCAECs following transduction with adenoviral vector overexpressing Nrf2, treatment with 5 ng/ml TNF α , or the combination in static culture. ** P < 0.01 vs Untreated Control; +++ P < 0.001 vs β -gal adenoviral vector control.

in other models do not apparently persist after longer exposures to TNF α in our model. Instead, this study identified an unexpected inhibitory effect of repeated exposure to CSE on expression of a subset of pro-inflammatory genes. This effect correlated with the upregulation of Nrf2 rather than KLF2/4. Furthermore, TNF α , laminar shear and CSE synergised to induce the transcriptional inhibitor ATF3, which we showed to be an Nrf2 responsive gene. We found that ATF3 expression in HCAECs has a large dynamic range, with its expression increasing 185-fold between the highest and lowest conditions. Overexpression of ATF3 was shown to inhibit pro-inflammatory gene expression but independently of a direct effect on NF κ B activity. ATF3 upregulation therefore constitutes an NF κ B-independent protective mechanism that limits the expression of proinflammatory genes.

ATF3 is upregulated in a multitude of stressed tissues³⁶, hypoxic conditions³⁷ and some, but not all cancers^{38–40}, where its actions promote metastasis⁴¹. As a homodimer, ATF3 binds to the cyclic AMP response element and represses transcription⁴², potentially by localising inhibitory co-factors at the promoter. Gilchrist *et al.* demonstrated that, in macrophages, ATF3 expression was induced by LPS treatment and inhibited TLR4-stimulated inflammatory responses as part of a negative-feedback loop³⁴. Interestingly, they showed the predominant inhibitory action was seen where ATF3 binding sites closely apposed NF κ B binding sites, which was supported by chromatin immunoprecipitation experiments. We therefore, think it is most likely that ATF3 upregulation and inhibition of NF κ B-mediated transcription, is the mechanism responsible for the anti-inflammatory effect elicited by CSE in HCAEC. Furthermore, macrophages from ATF3^{-/-} mice responded more vigorously to LPS treatment and suffered greater mortality to LPS challenge, suggesting a general role for ATF3 in dampening inflammation. Consistent with these results, we observed that adenoviral-mediated overexpression of ATF3 inhibited TNF α -dependent VCAM1 expression. This may be context specific as another group demonstrated that ATF3, in concert with TGF β signalling⁴³, increased pro-inflammatory gene expression. The action of NF κ B is very context specific and regulates both prosurvival and proinflammatory gene expression⁴⁴, further work is needed to identify which NF κ B responsive genes are subject to ATF3-mediated repression. KLF4 was also shown to repress VCAM1 expression⁴⁵, but because CSE did not alter KLF4 mRNA levels or downstream gene expression, it is unlikely that KLF4 contributes to the anti-inflammatory effects of CSE.

In contrast to previous reports, we did not observe a reduction in KLF2 or KLF4 expression with TNF α treatment. NF κ B triggered the recruitment of HDAC4 and 5 to the promoter of KLF2 reducing its expression in static culture in HUVEC⁴⁶. This suggests that prolonged shear stress may reduce the recruitment of HDAC4 and 5 to the promoter of KLF2, or that there is a difference in the response of HUVEC and HCAEC to TNF α treatment. Additionally, while TNF α induced an increase in ROS production (sup Fig. 3A), this ROS did not activate Nrf2 responsive genes (Fig. 3). This suggests a specific localisation or type of ROS is necessary for Nrf2 activation. CSE is known to contain very high levels of free radicals^{47,48}, indicating Nrf2 activation is much more sensitive to this

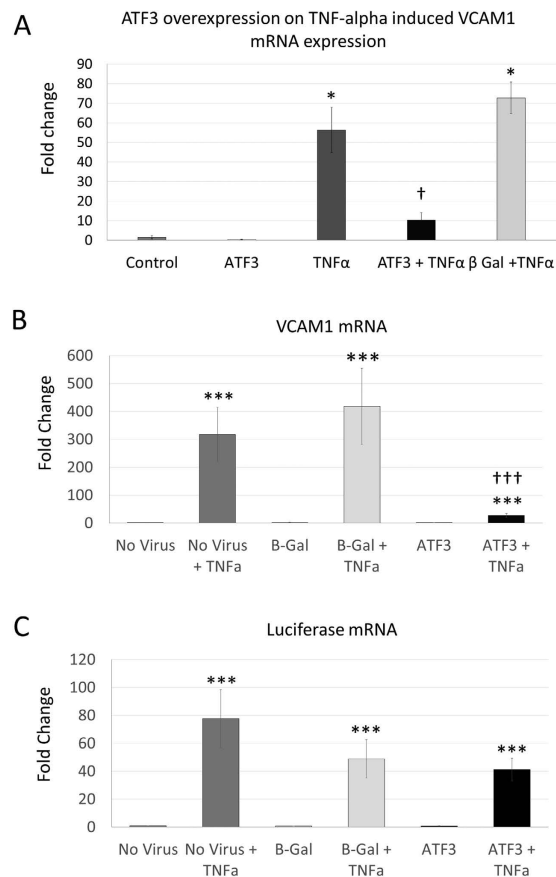


Figure 5. ATF3 overexpression reduces VCAM1 upregulation. (A) Adenoviral-mediated ATF3 overexpression reduced TNF α -stimulated VCAM1 upregulation in HCAEC. (B) In NF κ B reporter endothelial cell line NF-EA.hy926, ATF3 overexpression reduced TNF α -stimulated VCAM1 mRNA upregulation; however did not inhibit NF κ B reporter activity (C), measured by changes in luciferase mRNA expression. *P < 0.05 vs untreated control; †††P < 0.001 vs no virus + TNF α or β -gal viral control + TNF α ; n = 3.

rather than endogenously generated ROS. There is also the possibility of cell-specific effects in this regard, as TNF α was shown to activate Nrf2 in macrophages⁴⁹.

Our data hints at the potential of using local upregulation of ATF3 as a new avenue for treating inflammatory diseases. While the detrimental effects of smoking are well documented (tobacco contributes to the deaths of up to half of its users – World Health Organisation statistics), there are a few pathologies where it has been shown that smoking reduces the severity of the symptoms. For example, ulcerative colitis⁵⁰, recurrent aphthous stomatitis⁵¹, Behçet's disease⁵² (which is noted to flare up on cessation of smoking) and Parkinson's disease⁵³ (where smoking has a protective effect on the development of symptoms). While the detrimental effects of smoking far outweigh any beneficial effects, our work suggests that part of the protective effect in these select group pathologies might be mediated through ATF3 upregulation by cigarette smoke; however further investigation would be needed to support this hypothesis. Directly augmenting ATF3 expression, using localised gene transfer or application of Nrf2 agonists^{54–56}, could offer therapeutic potential by bypassing the damaging effects of free radicals generated in tobacco combustion.

Our *in vitro* model has the advantage that endothelial cells have time to adapt to their shear environment before treatments are applied. This prevents any treatment from interfering with the adaptation process, which might be a confounding factor where the treatments are applied at the commencement of flow. The extended nature of these flow experiments does however preclude pre-treatment with agents that limit endothelial proliferation, as we aim to start with a completely confluent monolayer of cells. CSE was generated by bubbling filtered mainstream smoke through tissue culture media²³. This captured the water-soluble components of cigarette smoke, which was filtered to remove particulate matter and immediately applied to cells, to prevent the quenching of dissolved free radicals. The water-soluble components of cigarette smoke have greater relevance for the study of the systemic effects of cigarette smoke, although it is not possible to assess if CSE generated in this way captures the same components of cigarette smoke that are capable of passing through the lungs into the blood stream. In addition, the CSE is administered to cells as a bolus every 16 hours, because of the experimental complexity of administering smaller doses at shorter time intervals. This very approximately equates to an average person smoking 25 cigarettes²³.

In conclusion, this study has identified a novel anti-inflammatory pathway in HCAECs that is synergistically activated by TNF α , laminar shear and aqueous CSE and is capable of significantly downregulating adhesion

molecule and inflammatory cytokine expression. Furthermore, this effect can be recapitulated by the upregulation of transcription factor ATF3.

Methods

Cell culture. Human coronary artery endothelial cells (HCAECs, PromoCell, passage 3 to 6) were cultured in endothelial cell growth medium kit (MV2, PromoCell) with the addition of 100 U/ml penicillin/streptomycin. For flow experiments, HCAECs were seeded at 2.5×10^5 cells/slide onto gelatin coated glass slides within sterile silicon gaskets that limited cell attachment to the central portion of the slide ($\sim 9 \text{ cm}^2$). Cells were grown within the gaskets on the slides for a minimum of 72 hours prior to flow to ensure a completely confluent monolayer and allow maturation of cell-cell and cell-matrix interactions. The slide was assembled aseptically into a previously described parallel plate flow apparatus¹⁰ for exposure to oscillatory (OSS, 0 ± 5 dynes), laminar shear stress -15 dynes/cm² (LSS), or elevated laminar shear stress -75 dynes/cm² (ESS) for 72 hours. Cells were exposed to shear stress for 24 hours prior to any treatment to allow them to adapt to their shear environment and adopt the relevant phenotype. Cigarette smoke extract (CSE) was prepared, filter sterilized using $0.20 \mu\text{m}$ filter and used immediately upon creation as described²³. Briefly, CSE was created using ~ 385 ml of mainstream smoke (7–8 average puffs) from a single Marlboro Gold cigarette (7 mg tar, 0.6 mg nicotine) drawn through 10 ml of media MV2 at a rate of 70 ml/min. HCAECs were treated with 5 ng/ml tumour necrosis factor- α (TNF α , Milteny Biotech) and/or 10% CSE for 48 hours (total of 3 treatments, one every 16 hours, with cells analysed 16 hours after the last treatment, see Fig. 1H). For all flow experiments, MV2 media was made up omitting hydrocortisone and additional ascorbic acid and supplemented with 3.35% dextran (31390-Sigma) to raise the viscosity to 1.5 cP, equivalent to plasma.

Viral transduction. Wild type Nrf2 adenovirus (AdNrf2¹⁵) was generous gifts from Professor Paul Evans (Sheffield University, UK). ATF3 overexpressing adenovirus (AdATF3) was created by PCR amplification of cDNA with SW706F/707R (See the online supplement), and cloned into *BglIII/NheI* sites of CpG-free-mcs (Invivogen). The whole expression cassette was then shuttled into pDC511 (Microbix Biosystems, Canada) by *EcoRI* digest. The β -galactosidase (β -gal) control adenovirus (Ad β -gal) was made by cloning the *EcoRI* digest fragment containing the same expression cassette and β -galactosidase gene from CpG-LacZ (Invivogen) into pDC511. Both were then produced using the Microbix Biosystems kit according to their protocols. Optimal transduction of HCAEC was achieved using 300 PFU/cell overnight. NF κ B reporter cell line NF-EA.hy926 was created by transducing the endothelial cell line EA.hy926 with a lentiviral vector containing 8 repeats of a NF κ B binding site (GGGACTTTCC) minimal promoter and FLAG-Luc-2A-eGFP insert as described³⁵.

Western Blotting. Western blots were performed on SDS protein lysates quantified by picogreen assay, as described¹⁰. Lysates that contained 10,000 cells were resolved on SDS polyacrylamide gels, before transferring onto PVDF membranes and probing with primary antibodies overnight at 4 °C. Antibodies used: VCAM1 (AF643, R&D), THMB (Ab109189, Abcam), HMOX1 (Ab52947, Abcam), NF κ B (#8242, Cell Signalling), NF κ B pSer536 (#3033, Cell Signalling).

Quantitative PCR. Quantitative PCR was performed using the Roche SYBR green PCR mastermix on cDNA prepared using the QuantiTect Reverse Transcription Kit (Qiagen). Primers are listed in the supplementary methods.

Statistics. Statistical analyses were performed using a one way ANOVA with Tukey-Kramer post hoc tests, or two-way ANOVA for experiments combining shear stress and exposure to TNF α or CSE, with Bonferroni post-test. * $p < 0.05$; ** $p < 0.01$, *** $p < 0.001$.

References

- Dai, G. H. *et al.* Distinct endothelial phenotypes evoked by arterial waveforms derived from atherosclerosis-susceptible and -resistant regions of human vasculature. *Proc. Natl. Acad. Sci. USA* **101**, 14871–14876, doi: 10.1073/pnas.0406073101 (2004).
- Hahn, C. & Schwartz, M. A. Mechanotransduction in vascular physiology and atherogenesis. *Nat Rev Mol Cell Biol* **10**, 53–62, doi: 10.1038/nrm2596 (2009).
- Chiu, J. & Chien, S. Effects of disturbed flow on vascular endothelium: pathophysiological basis and clinical perspectives. *Physiol. Rev.* **91**, 327–387, doi: 10.1152/physrev.00047.2009 (2011).
- Gimbrone, M. A. & García-Cardeña, G. Endothelial Cell Dysfunction and the Pathobiology of Atherosclerosis. *Circ. Res.* **118**, 620–636, doi: 10.1161/circresaha.115.306301 (2016).
- Soulis, J. V., Farmakis, T. M., Giannoglou, G. D. & Louridas, G. E. Wall shear stress in normal left coronary artery tree. *J. Biomech.* **39**, 742–749, doi: http://dx.doi.org/10.1016/j.jbiomech.2004.12.026 (2006).
- Joshi, A. K. *et al.* Intimal Thickness Is not Associated With Wall Shear Stress Patterns in the Human Right Coronary Artery. *Arterioscler Thromb Vasc Biol* **24**, 2408–2413, doi: 10.1161/01.ATV.0000147118.97474.4b (2004).
- Stone, P. H. *et al.* Effect of Endothelial Shear Stress on the Progression of Coronary Artery Disease, Vascular Remodeling, and In-Stent Restenosis in Humans: *In Vivo* 6-Month Follow-Up Study. *Circulation* **108**, 438–444, doi: 10.1161/01.cir.0000080882.35274.ad (2003).
- Warboys, C. M., Amini, N., de Luca, A. & Evans, P. C. The role of blood flow in determining the sites of atherosclerotic plaques. *F1000 Medicine Reports* **3**, 5, doi: 10.3410/M3-5 (2011).
- Jiang, Y.-Z., Manduchi, E., Jiménez, J. M. & Davies, P. F. Endothelial Epigenetics in Biomechanical Stress: Disturbed Flow-Mediated Epigenomic Plasticity *In Vivo* and *In Vitro*. *Arterioscler. Thromb. Vasc. Biol.* **35**, 1317–1326, doi: 10.1161/atvbaha.115.303427 (2015).
- White, S. *et al.* Characterization of the differential response of endothelial cells exposed to normal and elevated laminar shear stress. *J. Cell. Physiol.* **226**, 2841–2848, doi: 10.1002/jcp.22629 (2011).
- O'Carroll, S. J. *et al.* Pro-inflammatory TNF α and IL-1 β differentially regulate the inflammatory phenotype of brain microvascular endothelial cells. *Journal of Neuroinflammation* **12**, 1–18, doi: 10.1186/s12974-015-0346-0 (2015).
- Rajan, S., Ye, J., Bai, S., Huang, F. & Guo & Y.-L. NF- κ B, but not p38 MAP Kinase, is required for TNF- α -induced expression of cell adhesion molecules in endothelial cells. *J. Cell. Biochem.* **105**, 477–486, doi: 10.1002/jcb.21845 (2008).

13. Ahn, S. Y. *et al.* Tumor Necrosis Factor- α Induces Fractalkine Expression Preferentially in Arterial Endothelial Cells and Mithramycin A Suppresses TNF- α -Induced Fractalkine Expression. *The American Journal of Pathology* **164**, 1663–1672, doi: [http://dx.doi.org/10.1016/S0002-9440\(10\)63725-X](http://dx.doi.org/10.1016/S0002-9440(10)63725-X) (2004).
14. Dekker, R. *et al.* Prolonged fluid shear stress induces a distinct set of endothelial cell genes, most specifically lung Kruppel-like factor (KLF2). *Blood* **100**, 1689–1698, doi: [10.1182/blood-2002-01-0046](https://doi.org/10.1182/blood-2002-01-0046) (2002).
15. Zakkar, M. *et al.* Activation of Nrf2 in Endothelial Cells Protects Arteries From Exhibiting a Proinflammatory State. *Arterioscler Thromb Vasc Biol* **29**, 1851–1857, doi: [10.1161/atvbaha.109.193375](https://doi.org/10.1161/atvbaha.109.193375) (2009).
16. Fledderus, J. O. *et al.* Prolonged shear stress and KLF2 suppress constitutive proinflammatory transcription through inhibition of ATF2. *Blood* **109**, 4249–4257, doi: [10.1182/blood-2006-07-036020](https://doi.org/10.1182/blood-2006-07-036020) (2007).
17. Davies, M. J. *et al.* The expression of the adhesion molecules ICAM-1, VCAM-1, PECAM, and E-selectin in human atherosclerosis. *The Journal of Pathology* **171**, 223–229, doi: [10.1002/path.1711710311](https://doi.org/10.1002/path.1711710311) (1993).
18. Gimbrone, M. A., Cybulsky, M. I., Kume, N., Collins, T. & Resnick, N. Vascular Endothelium. *Annals of the New York Academy of Sciences* **748**, 122–131, doi: [10.1111/j.1749-6632.1994.tb17312.x](https://doi.org/10.1111/j.1749-6632.1994.tb17312.x) (1994).
19. Bernhard, D. *et al.* Disruption of vascular endothelial homeostasis by tobacco smoke—impact on atherosclerosis. *The FASEB Journal*, doi: [10.1096/fj.03-0312fe](https://doi.org/10.1096/fj.03-0312fe) (2003).
20. Orosz, Z. *et al.* Cigarette smoke-induced proinflammatory alterations in the endothelial phenotype: role of NAD(P)H oxidase activation. *American Journal of Physiology - Heart and Circulatory Physiology* **292**, H130–H139, doi: [10.1152/ajpheart.00599.2006](https://doi.org/10.1152/ajpheart.00599.2006) (2007).
21. Noronha-Dutra, A. A., Epperlein, M. M. & Woolf, N. Effect of cigarette smoking on cultured human endothelial cells. *Cardiovasc. Res.* **27**, 774–778, doi: [10.1093/cvr/27.5.774](https://doi.org/10.1093/cvr/27.5.774) (1993).
22. Barbieri, S. S. *et al.* Cytokines present in smokers' serum interact with smoke components to enhance endothelial dysfunction. *Cardiovasc. Res.* **90**, 475–483, doi: [10.1093/cvr/cvr032](https://doi.org/10.1093/cvr/cvr032) (2011).
23. Teasdale, J. E., Newby, A. C., Timpson, N. J., Munafò, M. R. & White, S. J. Cigarette smoke but not electronic cigarette aerosol activates a stress response in human coronary artery endothelial cells in culture. *Drug Alcohol Depend.* **163**, 256–260, doi: <http://dx.doi.org/10.1016/j.drugalcdep.2016.04.020> (2016).
24. Matsumoto, Y. *et al.* Fluid Shear Stress Attenuates Tumor Necrosis Factor- α -Induced Tissue Factor Expression in Cultured Human Endothelial Cells. *Blood* **91**, 4164–4172 (1998).
25. Surapitschat, J. *et al.* Fluid shear stress inhibits TNF- α activation of JNK but not ERK1/2 or p38 in human umbilical vein endothelial cells: Inhibitory crosstalk among MAPK family members. *Proc. Natl. Acad. Sci. USA* **98**, 6476–6481, doi: [10.1073/pnas.101134098](https://doi.org/10.1073/pnas.101134098) (2001).
26. Chiu, J. *et al.* Shear stress increases ICAM-1 and decreases VCAM-1 and E-selectin expressions induced by tumor necrosis factor-alpha in endothelial cells. *Arterioscler Thromb Vasc Biol* **24**, 73–79, doi: [10.1161/01.ATV.0000106321.63667.24](https://doi.org/10.1161/01.ATV.0000106321.63667.24) (2004).
27. Yamawaki, H., Lehoux, S. & Berk, B. C. Chronic Physiological Shear Stress Inhibits Tumor Necrosis Factor-Induced Proinflammatory Responses in Rabbit Aorta Perfused *Ex Vivo*. *Circulation* **108**, 1619–1625, doi: [10.1161/01.cir.0000089373.49941.c4](https://doi.org/10.1161/01.cir.0000089373.49941.c4) (2003).
28. Chiu, J.-J. *et al.* Shear stress regulates gene expression in vascular endothelial cells in response to tumor necrosis factor- α : a study of the transcription profile with complementary DNA microarray. *J. Biomed. Sci.* **12**, 481–502, doi: [10.1007/s11373-005-4338-4](https://doi.org/10.1007/s11373-005-4338-4) (2005).
29. Atkins, G. B. & Jain, M. K. Role of Kruppel-Like Transcription Factors in Endothelial Biology. *Circ Res* **100**, 1686–1695, doi: [10.1161/01.RES.0000267856.00713.0a](https://doi.org/10.1161/01.RES.0000267856.00713.0a) (2007).
30. Chen, X. L. *et al.* Activation of Nrf2/ARE pathway protects endothelial cells from oxidant injury and inhibits inflammatory gene expression. *Am. J. Physiol.-Heart Circul. Physiol.* **290**, H1862–H1870, doi: [10.1152/ajpheart.00651.2005](https://doi.org/10.1152/ajpheart.00651.2005) (2006).
31. McSweeney, S. R., Warabi, E. & Siow, R. C. M. Nrf2 as an Endothelial Mechanosensitive Transcription Factor: Going With the Flow. *Hypertension* **67**, 20–29, doi: [10.1161/hypertensionaha.115.06146](https://doi.org/10.1161/hypertensionaha.115.06146) (2016).
32. Ma, Q. Role of Nrf2 in Oxidative Stress and Toxicity. *Annu. Rev. Pharmacol. Toxicol.* **53**, 401–426, doi: [10.1146/annurev-pharmtox-011112-140320](https://doi.org/10.1146/annurev-pharmtox-011112-140320) (2013).
33. Gorrini, C., Harris, I. S. & Mak, T. W. Modulation of oxidative stress as an anticancer strategy. *Nat Rev Drug Discov* **12**, 931–947, doi: [10.1038/nrd4002](https://doi.org/10.1038/nrd4002) (2013).
34. Gilchrist, M. *et al.* Systems biology approaches identify ATF3 as a negative regulator of Toll-like receptor 4. *Nature* **441**, 173–178, doi: [10.1038/nature04768](https://doi.org/10.1038/nature04768) (2006).
35. Buckley, S. M. K. *et al.* *In vivo* bioimaging with tissue-specific transcription factor activated luciferase reporters. *Scientific reports* **5**, 11842, doi: [10.1038/srep11842](https://doi.org/10.1038/srep11842) (2015).
36. Chen, B. P., Wolfgang, C. D. & Hai, T. Analysis of ATF3, a transcription factor induced by physiological stresses and modulated by gadd153/Chop10. *Mol. Cell. Biol.* **16**, 1157–1168, doi: [10.1128/mcb.16.3.1157](https://doi.org/10.1128/mcb.16.3.1157) (1996).
37. Chen, S.-C., Liu, Y.-C., Shyu, K.-G. & Wang, D. L. Acute hypoxia to endothelial cells induces activating transcription factor 3 (ATF3) expression that is mediated via nitric oxide. *Atherosclerosis* **201**, 281–288, doi: [10.1016/j.atherosclerosis.2008.02.014](https://doi.org/10.1016/j.atherosclerosis.2008.02.014) (2008).
38. Ma, S. Q., Pang, C. H., Song, L. J., Guo, F. Y. & Sun, H. W. Activating transcription factor 3 is overexpressed in human glioma and its knockdown in glioblastoma cells causes growth inhibition both *in vitro* and *in vivo*. *Int. J. Mol. Med.* **35**, 1561–1573, doi: [10.3892/ijmm.2015.2173](https://doi.org/10.3892/ijmm.2015.2173) (2015).
39. Xie, J.-J. *et al.* ATF3 functions as a novel tumor suppressor with prognostic significance in esophageal squamous cell carcinoma. *2014*, doi: [10.18632/oncotarget.2322](https://doi.org/10.18632/oncotarget.2322) (2014).
40. Jiang, X., Kim, K.-J., Ha, T. & Lee, S.-H. Potential Dual Role of Activating Transcription Factor 3 in Colorectal Cancer. *Anticancer Research* **36**, 509–516 (2016).
41. Wu, Z.-Y., Wei, Z.-m., Sun, S.-J., Yuan, J. & Jiao, S.-C. Activating transcription factor 3 promotes colon cancer metastasis. *Tumor Biology* **35**, 8329–8334, doi: [10.1007/s13277-014-2044-4](https://doi.org/10.1007/s13277-014-2044-4) (2014).
42. Chen, B. P., Liang, G., Whelan, J. & Hai, T. ATF3 and ATF3 delta Zip. Transcriptional repression versus activation by alternatively spliced isoforms. *J. Biol. Chem.* **269**, 15819–15826 (1994).
43. Eiselein, L. *et al.* TGRL Lipolysis Products Induce Stress Protein ATF3 via the TGF- β Receptor Pathway in Human Aortic Endothelial Cells. *PLoS One* **10**, e0145523, doi: [10.1371/journal.pone.0145523](https://doi.org/10.1371/journal.pone.0145523) (2016).
44. Perkins, N. D. Integrating cell-signalling pathways with NF-[kappa]B and IKK function. *Nat Rev Mol Cell Biol* **8**, 49–62, doi: [10.1038/nrm2083](https://doi.org/10.1038/nrm2083) (2007).
45. Hamik, A. *et al.* Kruppel-like Factor 4 Regulates Endothelial Inflammation. *J. Biol. Chem.* **282**, 13769–13779, doi: [10.1074/jbc.M700078200](https://doi.org/10.1074/jbc.M700078200) (2007).
46. Kumar, A., Lin, Z., SenBanerjee, S. & Jain, M. K. Tumor Necrosis Factor Alpha-Mediated Reduction of KLF2 Is Due to Inhibition of MEF2 by NF- κ B and Histone Deacetylases. *Mol. Cell. Biol.* **25**, 5893–5903, doi: [10.1128/mcb.25.14.5893-5903.2005](https://doi.org/10.1128/mcb.25.14.5893-5903.2005) (2005).
47. Valavanidis, A., Vlachogianni, T. & Fiotakis, K. Tobacco Smoke: Involvement of Reactive Oxygen Species and Stable Free Radicals in Mechanisms of Oxidative Damage, Carcinogenesis and Synergistic Effects with Other Respirable Particles. *International Journal of Environmental Research and Public Health* **6**, 445–462, doi: [10.3390/ijerph6020445](https://doi.org/10.3390/ijerph6020445) (2009).
48. Church, D. F. & Pryor, W. A. Free-radical chemistry of cigarette smoke and its toxicological implications. *Environmental Health Perspectives* **64**, 111–126 (1985).
49. Rushworth, S. A., Shah, S. & MacEwan, D. J. TNF Mediates the Sustained Activation of Nrf2 in Human Monocytes. *J. Immunol* **187**, 702–707, doi: [10.4049/jimmunol.1004117](https://doi.org/10.4049/jimmunol.1004117) (2011).

50. Calkins, B. M. A meta-analysis of the role of smoking in inflammatory bowel disease. *Dig. Dis. Sci.* **34**, 1841–1854, doi: 10.1007/BF01536701 (1989).
51. Subramanyam, R. V. Occurrence of recurrent aphthous stomatitis only on lining mucosa and its relationship to smoking – A possible hypothesis. *Med. Hypotheses* **77**, 185–187, doi: <http://dx.doi.org/10.1016/j.mehy.2011.04.006> (2011).
52. Perricone, C. *et al.* Smoke and autoimmunity: The fire behind the disease. *Autoimmunity Reviews* **15**, 354–374, doi: <http://dx.doi.org/10.1016/j.autrev.2016.01.001> (2016).
53. Li, X., Li, W., Liu, G., Shen, X. & Tang, Y. Association between cigarette smoking and Parkinson's disease: A meta-analysis. *Arch. Gerontol. Geriatr.* **61**, 510–516, doi: <http://dx.doi.org/10.1016/j.archger.2015.08.004> (2015).
54. Keum, Y.-S. *et al.* Mechanism of Action of Sulforaphane: Inhibition of p38 Mitogen-Activated Protein Kinase Isoforms Contributing to the Induction of Antioxidant Response Element-Mediated Heme Oxygenase-1 in Human Hepatoma HepG2 Cells. *Cancer Res.* **66**, 8804–8813, doi: 10.1158/0008-5472.can-05-3513 (2006).
55. Kumar, V. *et al.* Novel Chalcone Derivatives as Potent Nrf2 Activators in Mice and Human Lung Epithelial Cells. *J. Med. Chem.* **54**, 4147–4159, doi: 10.1021/jm2002348 (2011).
56. Chen, H. *et al.* Isoliquiritigenin-induced effects on Nrf2 mediated antioxidant defence in the HL-60 cell monocytic differentiation. *Cell Biol. Int.* **37**, 1215–1224, doi: 10.1002/cbin.10156 (2013).

Acknowledgements

The authors are very grateful to the technical support provided by Dr Sue Finerty, and Mrs Jill Tarlton, and the generous gift of Adenoviral vector overexpressing Nrf2 from Prof. Paul Evans (University of Sheffield). This work was supported by British Heart Foundation grants FS/12/77/29887 [Teasdale], PG/11/44/28972 [Hazell], FS/16/9/32012 [Peachey] and CH95/001 [Newby and White]; NC3Rs NC/L001780/1 [McKay]; High Impact Research Chancellor (UM.C/625/1/HIR/MOHE/MED/22 H-20001-E000086) grant from the University of Malaya [Hindmarch]. It was also supported by the National Health Research Institute (UK) Bristol Biomedical Research Unit in Cardiovascular Medicine. The funders played no role in study design; in the collection, analysis and interpretation of data; in the writing of the report; and in the decision to submit the article for publication.

Author Contributions

J.T., G.H. and A.P. performed experiments, G.N. and T.M. provided essential reagents and reviewed the manuscript, C.H. and M.B. analysed data and reviewed the manuscript, A.N. conceived and supervised the study and reviewed the manuscript; S.W. conceived the study, performed experiments, supervised the experiments and drafted the manuscript. All Authors approved the final manuscript for submission.

Additional Information

Supplementary information accompanies this paper at <http://www.nature.com/srep>

Competing financial interests: The authors declare no competing financial interests.

How to cite this article: Teasdale, J. E. *et al.* Cigarette smoke extract profoundly suppresses TNF α -mediated proinflammatory gene expression through upregulation of ATF3 in human coronary artery endothelial cells. *Sci. Rep.* **7**, 39945; doi: 10.1038/srep39945 (2017).

Publisher's note: Springer Nature remains neutral with regard to jurisdictional claims in published maps and institutional affiliations.



This work is licensed under a Creative Commons Attribution 4.0 International License. The images or other third party material in this article are included in the article's Creative Commons license, unless indicated otherwise in the credit line; if the material is not included under the Creative Commons license, users will need to obtain permission from the license holder to reproduce the material. To view a copy of this license, visit <http://creativecommons.org/licenses/by/4.0/>

© The Author(s) 2017